

# **Best Practice Tariff (BPT) for Fragility Hip Fracture Care User**

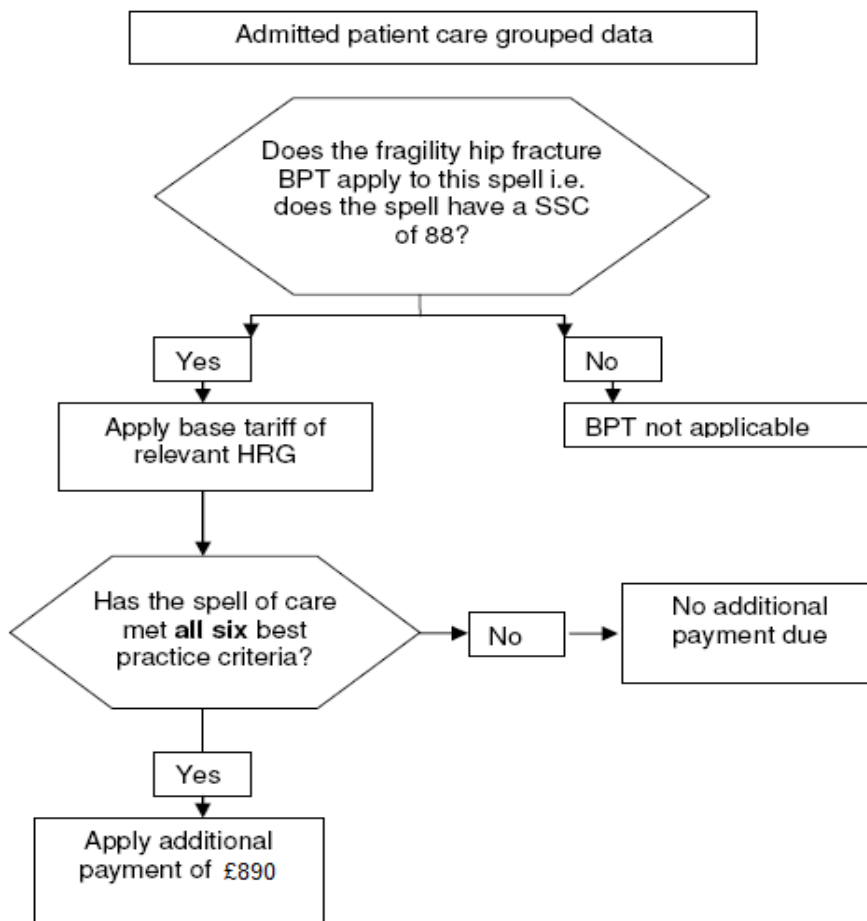
## **Guide – 2011 update**

For a definitive guide to BPT 2011-2012 please go to:

[http://www.dh.gov.uk/en/Publicationsandstatistics/Publications/PublicationsPolicyAndGuidance/DH\\_124356](http://www.dh.gov.uk/en/Publicationsandstatistics/Publications/PublicationsPolicyAndGuidance/DH_124356)

### **Fragility hip fracture best practice tariff flow diagram**

The following diagram illustrates the BPT flow for fragility hip fracture.



## Reporting Process

This section sets out the reporting process and the roles and responsibilities within the reporting process.

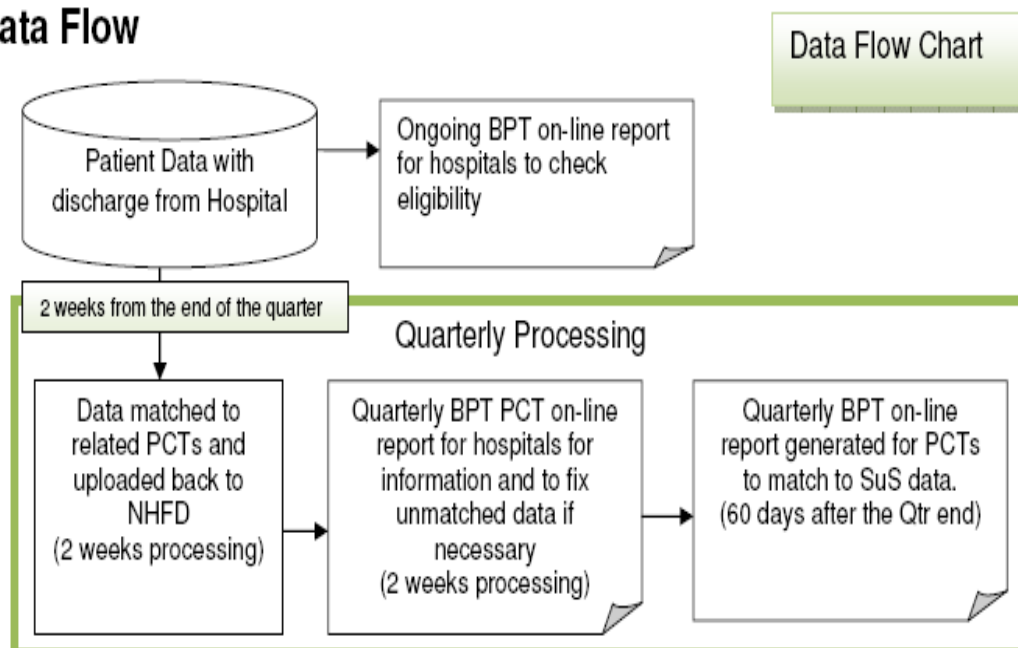
The National Hip Fracture Database (NHFD) will produce an on-line report on compliance to BPT criteria, on a quarterly basis in line with the SuS-PbR reporting process and will be available for commissioners to download from the NHFD website by registered users.

In practice the providers will be given 2 weeks from the end of the quarter to input/edit any outstanding records. Data will then be matched to PCTs which will take a further 2 weeks. Once the PCT data is uploaded, providers will be given another 2 weeks to correct any problems or omissions.

All records, including those over 60 who fail to meet the criteria, will be sent to relevant commissioners when available.

The additional best practice payment will be paid quarterly in arrears, with the base tariff paid as normal.

## Data Flow



## Timelines for BPT data checks 2011-2012

Quarter	Quarter end date	Period to check data	Data sent for PCT matching	Data returned from PCT matching	Period to check BPT/PCT matching	Final report available to PCT's
Q1	30/06/2011	30/06/2011-13/07/2011	14/07/2011	27/07/2011	28/07/2011-10/08/2011	11/08/2011
Q2	30/09/2011	30/09/2011-13/10/2011	14/10/2011	27/10/2011	28/10/2011-10/11/2011	11/11/2011
Q3	31/12/2011	31/12/2011-13/01/2012	14/01/2012	27/01/2012	28/01/2012-10/02/2012	11/02/2012
Q4	31/03/2012	31/03/2012-13/04/2012	14/04/2012	27/04/2012	28/04/2012-10/05/2012	11/05/2012

All boxes highlighted green show periods when data needs to be checked, corrected or matched by the hospitals.

- Please be aware that only patients aged 60 and over will only appear in the BPT report.
- Patients populate the BPT report in the quarter they are discharged from the Trust