

District General Perspective



Burton Hospital

600+ beds with 250, 000 patient catchment area

Challenged by ageing population

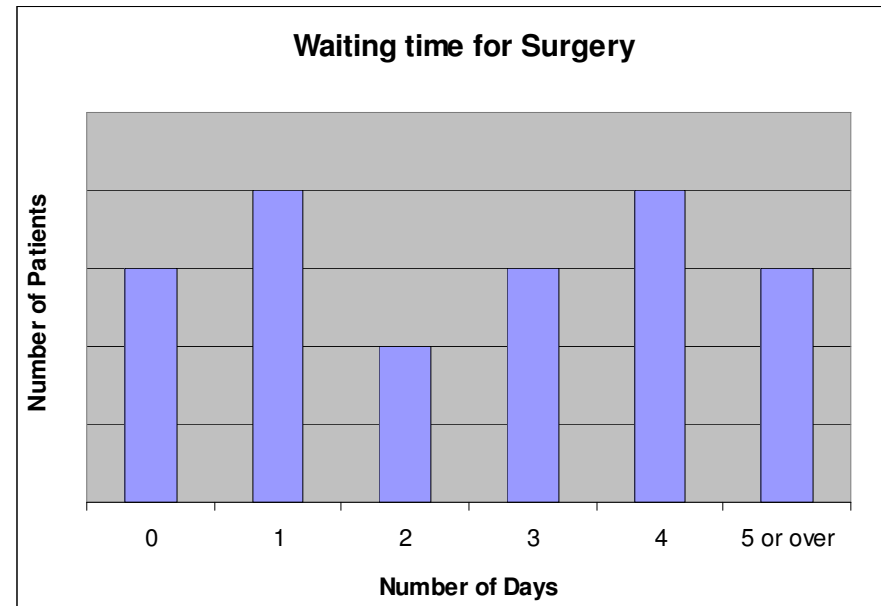
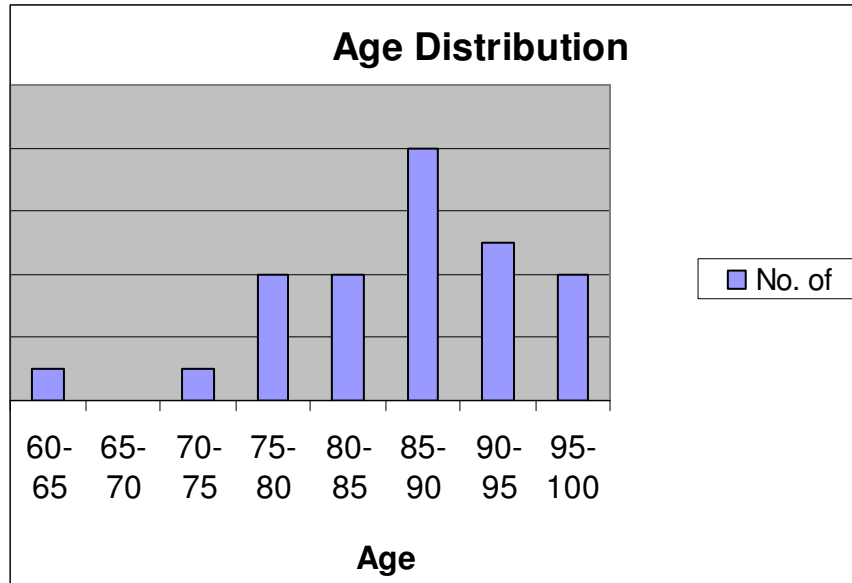
Limited end of life service and resources for social services

Audit 2003

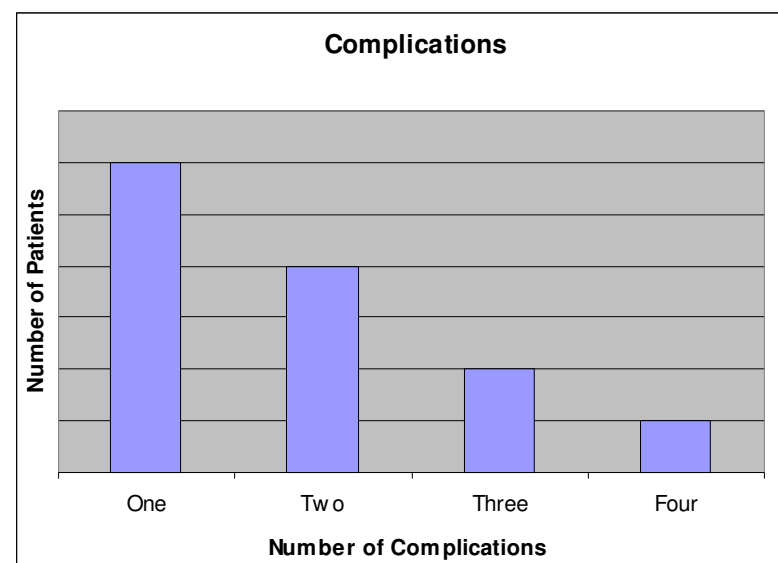
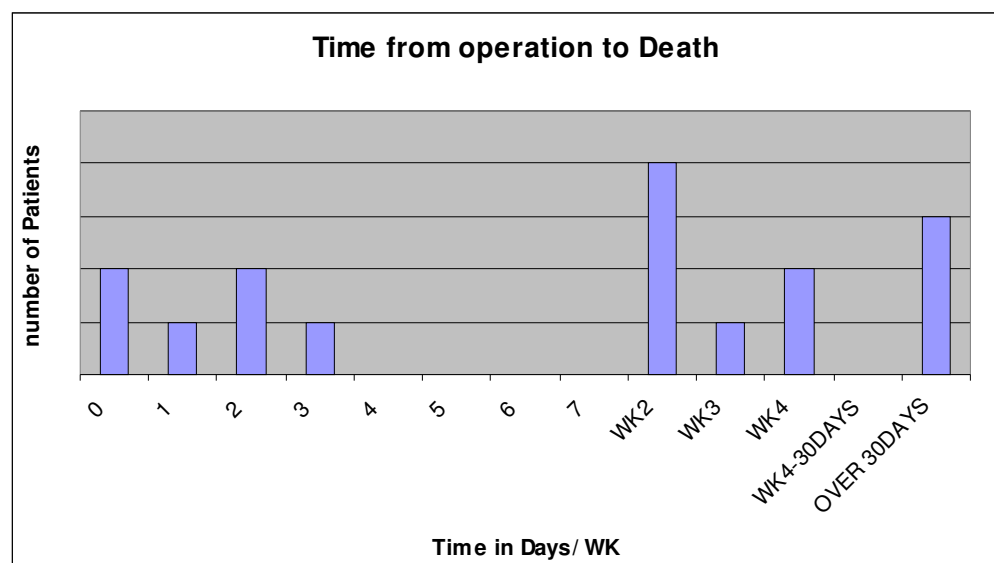
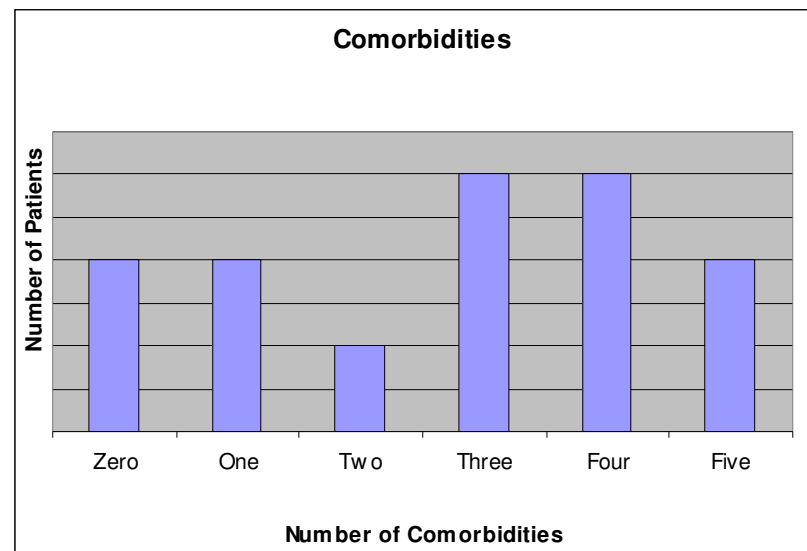
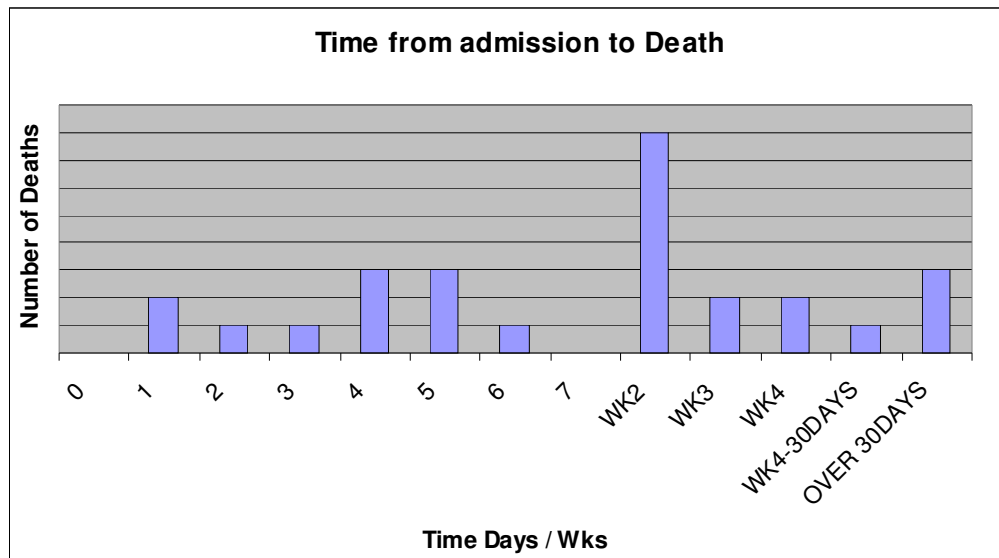
Number of deaths in Trauma and Orthopaedics in previous 17 months

Out of that (77%) were pts with NOF

Only half were fit enough to have surgery



Audit May 2009



Local Changes

Expanding department 2001-7
5 to 7 lists for trauma

Healthcare commission

Daily two trauma lists

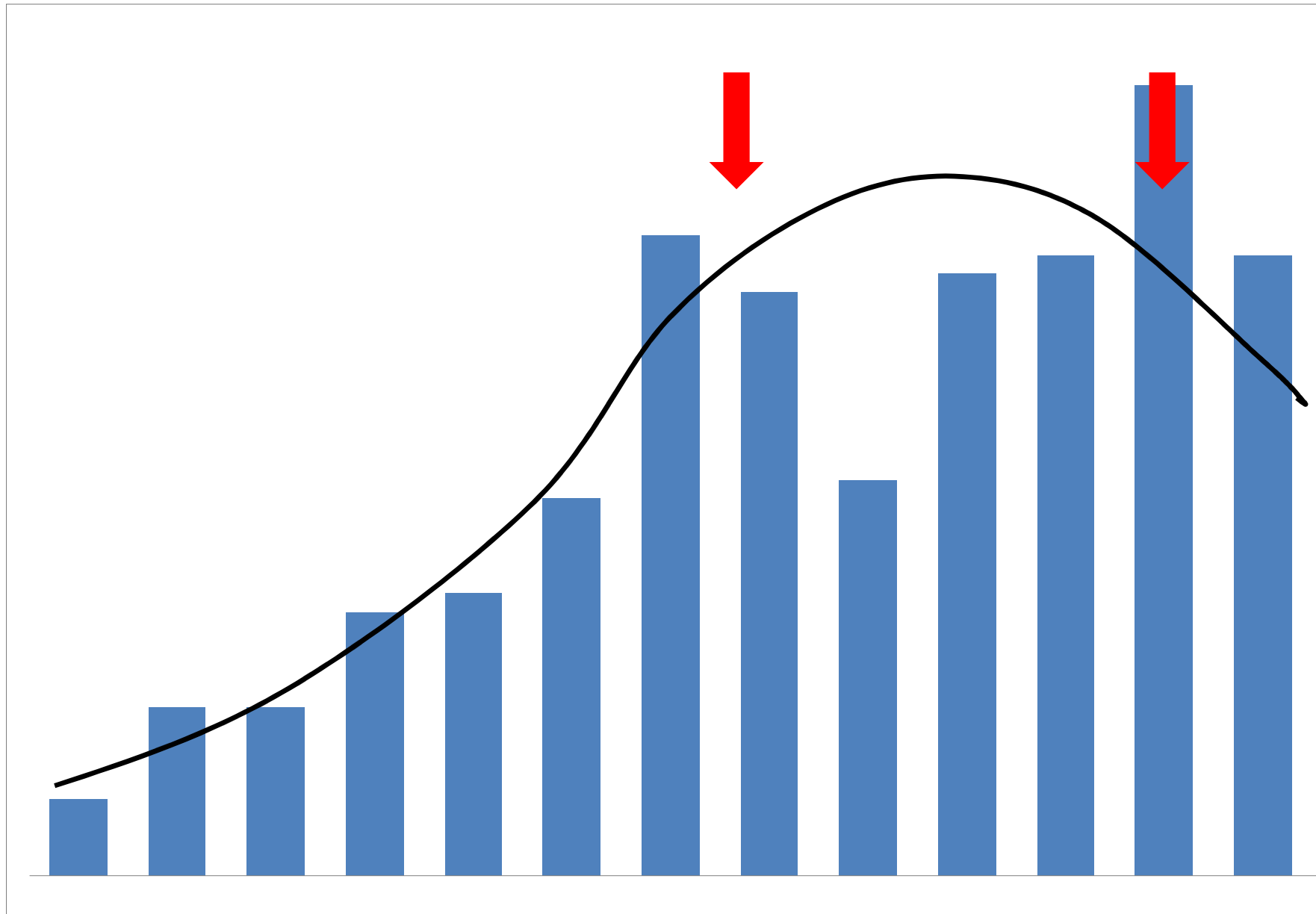
Theatre list management

Nurse trauma co-ordinator

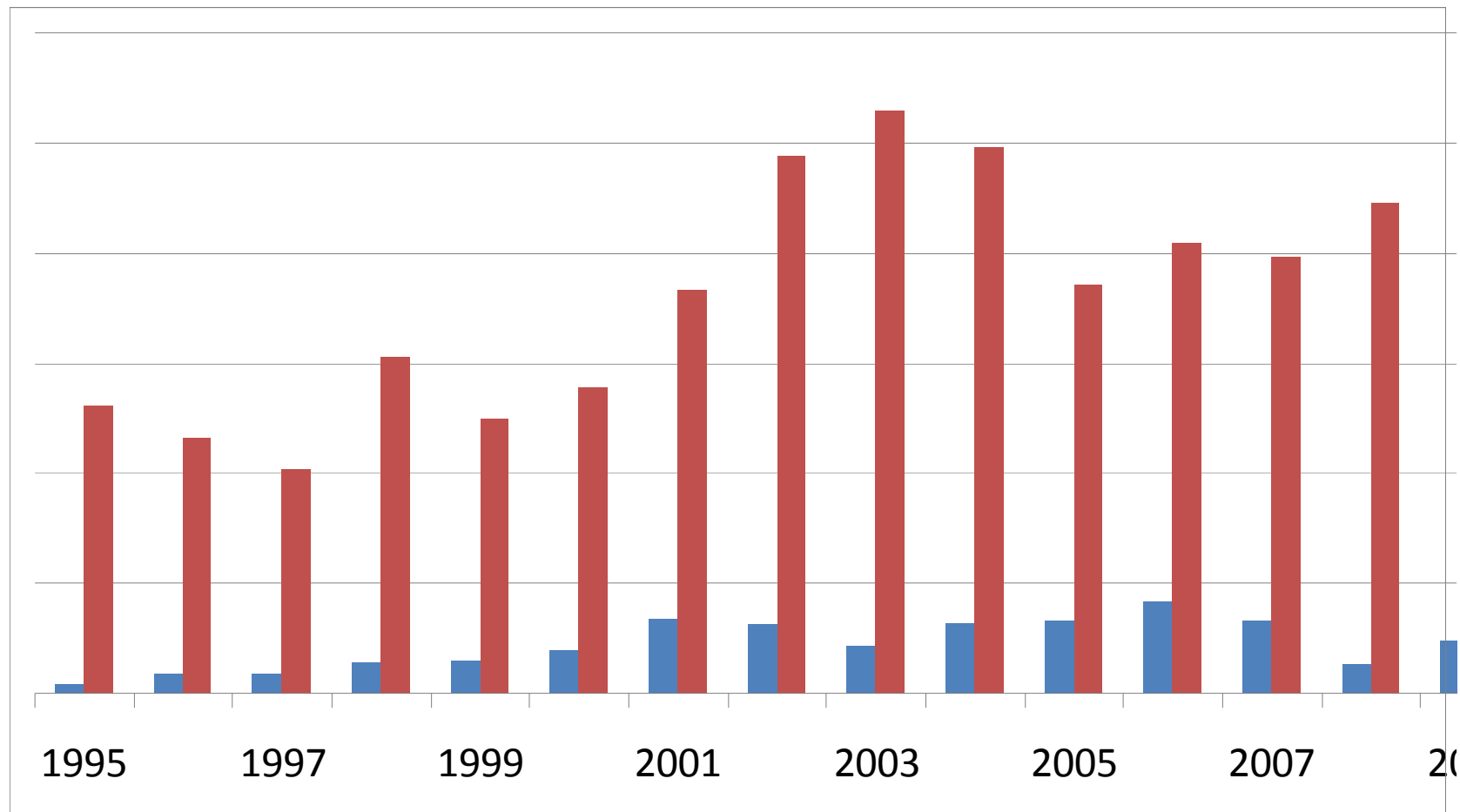
COE – dedicated team



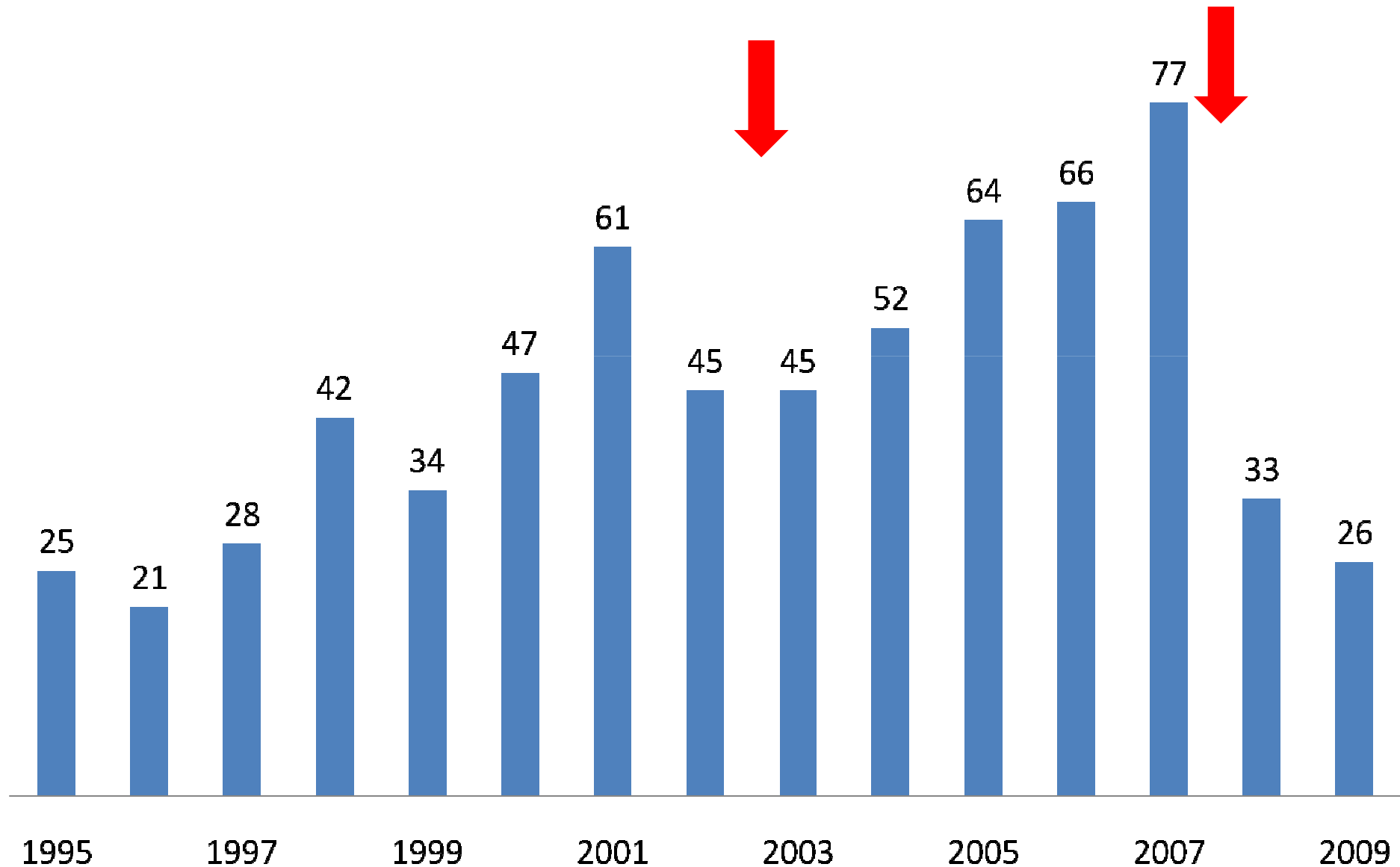
Number of Deaths



Numbers of deaths vs Number of cases



Numbers with a Length of Stay over 30 days



Re-Audit Jan 2010 vs 2003

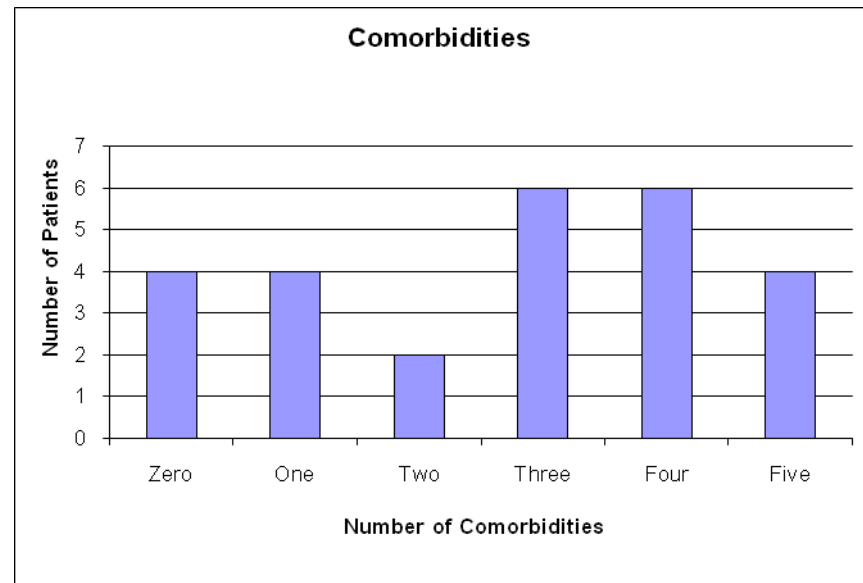
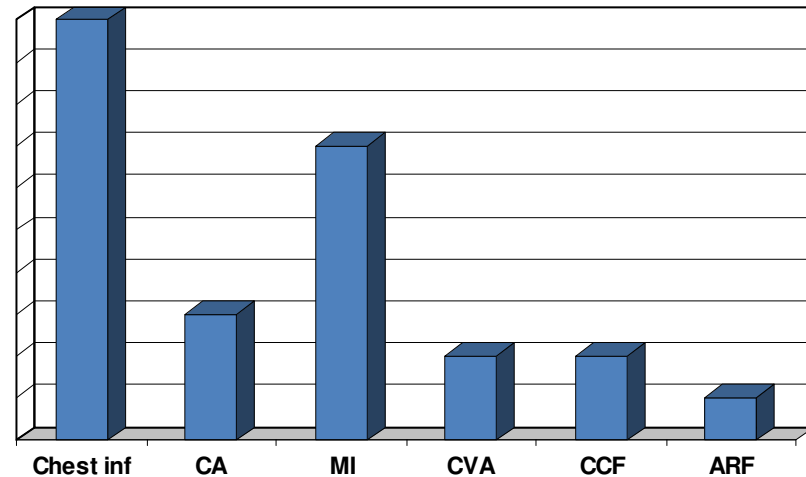
Total no cases – 394 (504)

Non-operated – 7 (11)

Operated – 28 (9%) (16)

<48 hours – 22 (5)

>48 hours – 6 (11)



Challenges

- Increasingly sick patients
- Limited Resources
- Delivering CIP
- Planning for future

Thank You

