



NHFD Dashboard 2015

Addenbrooke's Hospital (ADD)

Figures are hospital average percentages from 2013 and 2014. Data taken from the National Hip Fracture Database.

National Hip Fracture Database lead clinician:

Madhavi Vindlacheruvu

Ward Management

	2013	2014	Rating	Progress
Admitted to orthopaedic ward within 4 hours	62.4	58.2	○	↓
Mental test score recorded on admission	99.1	99.7	✓	-
Perioperative medical assessment	96.7	97.9	✓	-
Mobilised out of bed on the day after surgery (QS16-9)	No data	96.2	✓	-
Received falls assessment (QS16-11)	99.3	99.7	-	-
Received bone health assessment (QS16-12)	99.3	99.7	-	-
Best practice tariff achievement	67.4	80.5	✓	↑

Surgery

	2013	2014	Rating	Progress
Surgery on day of, or day after, admission	67.2	80.9	✓	↑
Proportion of general anaesthetic with nerve blocks	0.5	23.6	✗	↑
Proportion of spinal anaesthetic with nerve blocks	0.0	6.1	✗	↑
Proportion of arthroplasties which are cemented	99.4	100.0	✓	-
Eligible displaced intracapsular fractures treated with THR	25.3	25.6	○	-
Intertrochanteric fractures treated with SHS	91.7	95.1	✓	↑
Subtrochanteric fractures treated with an IM nail	84.2	92.0	○	↑

Outcomes

	2013	2014	Rating	Progress
Case ascertainment	0.0	74.6	-	-
Overall hospital length of stay (days)	15.7	14.5	✓	-
Return to original residence within 30 days	25.0	59.9	○	↑
Developed a pressure ulcer after presenting with hip fracture	2.0	3.9	-	↓
Pressure ulcer status not recorded	0.7	0.0	✓	-
Hip fractures which were sustained as an inpatient	0.0	1.3	-	-

Key

✓ Top Quartile

○ 2nd/3rd Quartile

✗ Lowest Quartile



Performance improving

- Performance broadly unchanged



Performance declining



Run Charts

(Up to date, and interactive versions of all run charts for your hospital can be viewed at www.nhfd.co.uk)

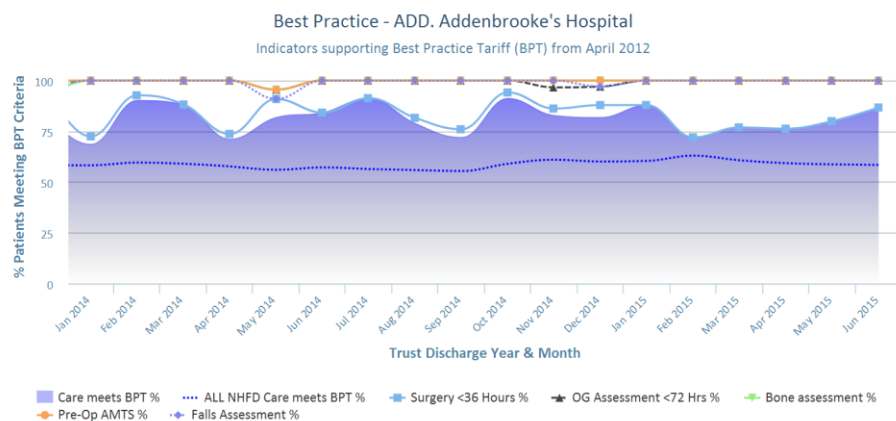


Chart data is indicative status only - © Royal College of Physicians - Technology by Crown Informatics (ID: BPT2)

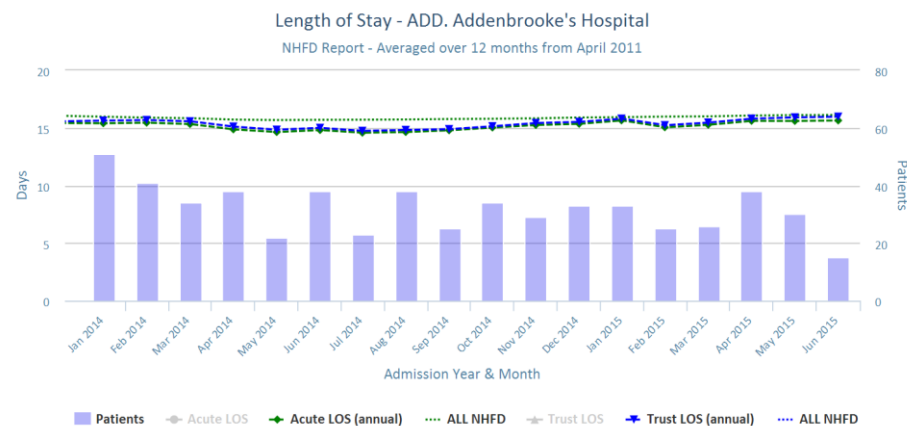


Chart data is indicative status only - www.nhfd.co.uk © Royal College of Physicians - Technology by Crown Informatics

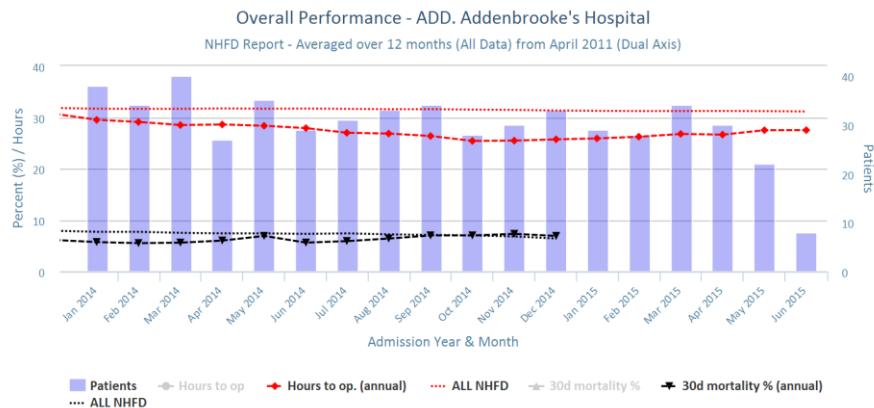


Chart data is indicative status only - www.nhfd.co.uk © Royal College of Physicians - Technology by Crown Informatics

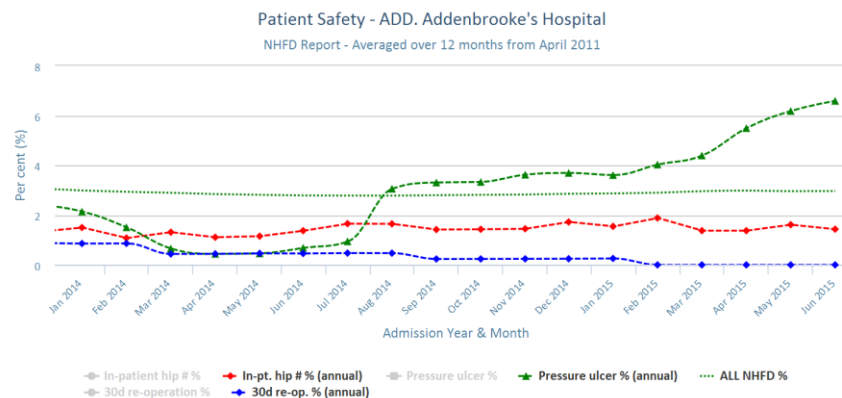


Chart data is indicative status only - www.nhfd.co.uk © Royal College of Physicians - Technology by Crown Informatics