



NHFD Dashboard 2015

Barnsley District General Hospital
(BAR)

Figures are hospital average percentages from 2013 and 2014. Data taken from the National Hip Fracture Database.

National Hip Fracture Database lead clinician:

Janos Patko

Ward Management

	2013	2014	Rating	Progress
Admitted to orthopaedic ward within 4 hours	62.4	65.0	✓	↑
Mental test score recorded on admission	99.6	100.0	✓	-
Perioperative medical assessment	93.3	95.6	✓	-
Mobilised out of bed on the day after surgery (QS16-9)	No data	92.4	✓	-
Received falls assessment (QS16-11)	99.6	100.0	-	-
Received bone health assessment (QS16-12)	99.6	100.0	-	-
Best practice tariff achievement	79.5	77.2	✓	-

Surgery

	2013	2014	Rating	Progress
Surgery on day of, or day after, admission	78.1	78.5	○	-
Proportion of general anaesthetic with nerve blocks	44.1	47.7	○	↑
Proportion of spinal anaesthetic with nerve blocks	41.8	44.3	✓	-
Proportion of arthroplasties which are cemented	56.7	83.0	○	↑
Eligible displaced intracapsular fractures treated with THR	17.9	22.9	○	↑
Intertrochanteric fractures treated with SHS	91.2	85.9	○	↓
Subtrochanteric fractures treated with an IM nail	94.1	61.5	✗	↓

Outcomes

	2013	2014	Rating	Progress
Case ascertainment	No data	86.3	-	-
Overall hospital length of stay (days)	17.0	15.6	✓	-
Return to original residence within 30 days	0.0	49.5	○	↑
Developed a pressure ulcer after presenting with hip fracture	1.2	1.7	-	-
Pressure ulcer status not recorded	0.8	1.6	✗	-
Hip fractures which were sustained as an inpatient	No data	3.6	-	-

Key

✓ Top Quartile

○ 2nd/3rd Quartile

✗ Lowest Quartile



Performance improving

- Performance broadly unchanged



Performance declining



Run Charts

(Up to date, and interactive versions of all run charts for your hospital can be viewed at www.nhfd.co.uk)

Best Practice - BAR, Barnsley District General Hospital

Indicators supporting Best Practice Tariff (BPT) from April 2012

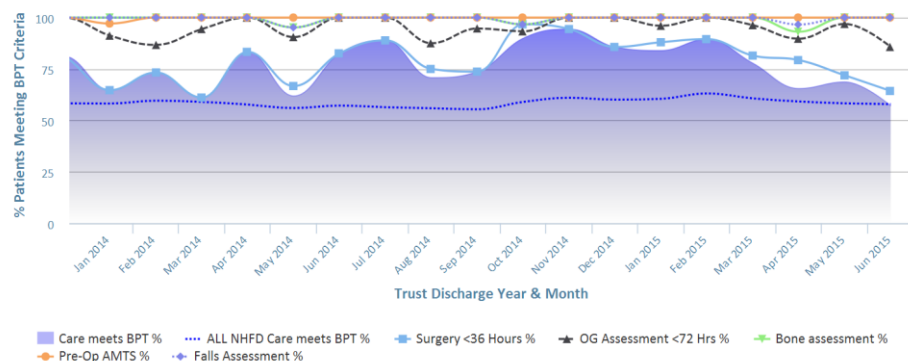


Chart data is indicative status only - © Royal College of Physicians - Technology by Crown Informatics (ID: BPT2)

Length of Stay - BAR, Barnsley District General Hospital

NHFD Report - Averaged over 12 months from April 2011

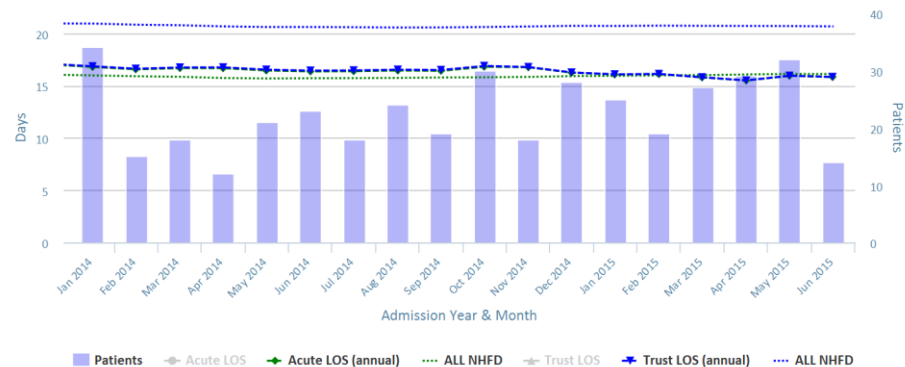


Chart data is indicative status only - www.nhfd.co.uk © Royal College of Physicians - Technology by Crown Informatics

Overall Performance - BAR, Barnsley District General Hospital

NHFD Report - Averaged over 12 months (All Data) from April 2011 (Dual Axis)

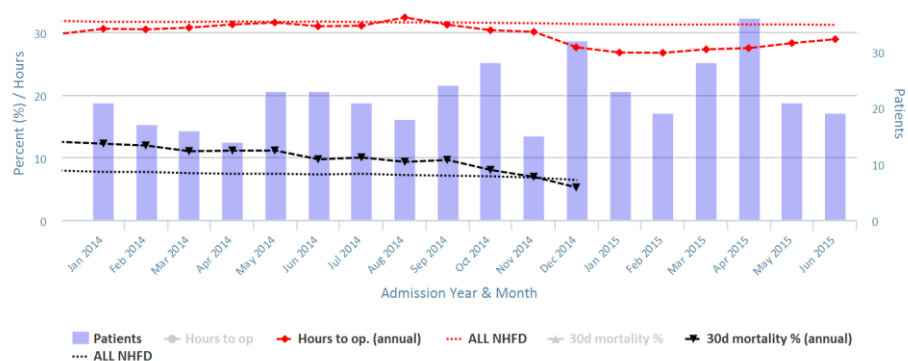


Chart data is indicative status only - www.nhfd.co.uk © Royal College of Physicians - Technology by Crown Informatics

Patient Safety - BAR, Barnsley District General Hospital

NHFD Report - Averaged over 12 months from April 2011

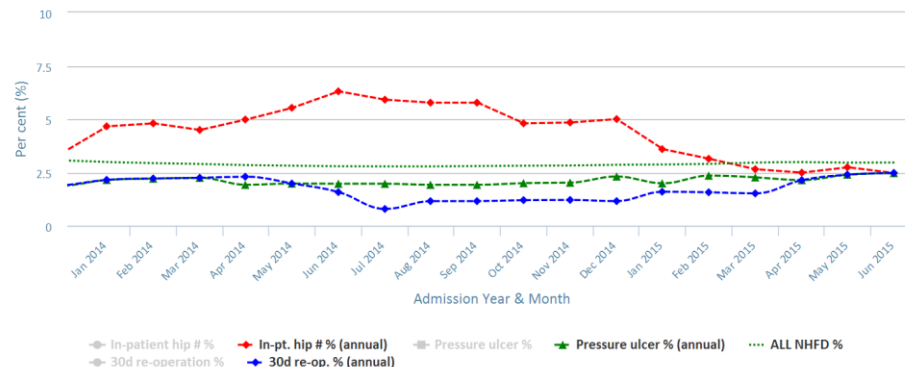


Chart data is indicative status only - www.nhfd.co.uk © Royal College of Physicians - Technology by Crown Informatics