



NHFD Dashboard 2015

Basildon Hospital (BAS)

Figures are hospital average percentages from 2013 and 2014. Data taken from the National Hip Fracture Database.

National Hip Fracture Database lead clinician:

Rob Wakeman

Ward Management

	2013	2014	Rating	Progress
Admitted to orthopaedic ward within 4 hours	13.8	16.5	✗	↑
Mental test score recorded on admission	98.7	99.5	✓	-
Perioperative medical assessment	94.7	91.8	○	↓
Mobilised out of bed on the day after surgery (QS16-9)	No data	95.6	✓	
Received falls assessment (QS16-11)	99.5	100.0		-
Received bone health assessment (QS16-12)	99.5	100.0		-
Best practice tariff achievement	61.8	58.5	○	↓

Surgery

	2013	2014	Rating	Progress
Surgery on day of, or day after, admission	64.8	61.0	✗	↓
Proportion of general anaesthetic with nerve blocks	11.1	21.9	✗	↑
Proportion of spinal anaesthetic with nerve blocks	22.0	32.3	○	↑
Proportion of arthroplasties which are cemented	55.3	64.3	✗	↑
Eligible displaced intracapsular fractures treated with THR	19.5	35.3	○	↑
Intertrochanteric fractures treated with SHS	95.8	92.1	○	↓
Subtrochanteric fractures treated with an IM nail	78.6	95.2	✓	↑

Outcomes

	2013	2014	Rating	Progress
Case ascertainment	No data	94.8		
Overall hospital length of stay (days)	17.5	17.3	○	-
Return to original residence within 30 days	56.2	51.5	○	↓
Developed a pressure ulcer after presenting with hip fracture	2.7	0.5		↑
Pressure ulcer status not recorded	0.0	0.0	✓	-
Hip fractures which were sustained as an inpatient	No data	4.5		

Key

✓ Top Quartile ○ 2nd/3rd Quartile ✗ Lowest Quartile
 ↑ Performance improving - Performance broadly unchanged ↓ Performance declining



Run Charts

(Up to date, and interactive versions of all run charts for your hospital can be viewed at www.nhfd.co.uk)

Best Practice - BAS. Basildon Hospital

Indicators supporting Best Practice Tariff (BPT) from April 2012

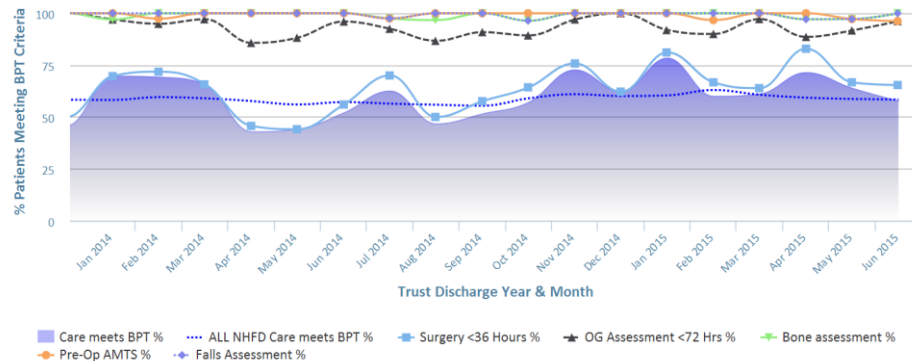


Chart data is indicative status only - © Royal College of Physicians - Technology by Crown Informatics (ID: BPT2)

Length of Stay - BAS. Basildon Hospital

NHFD Report - Averaged over 12 months from April 2011

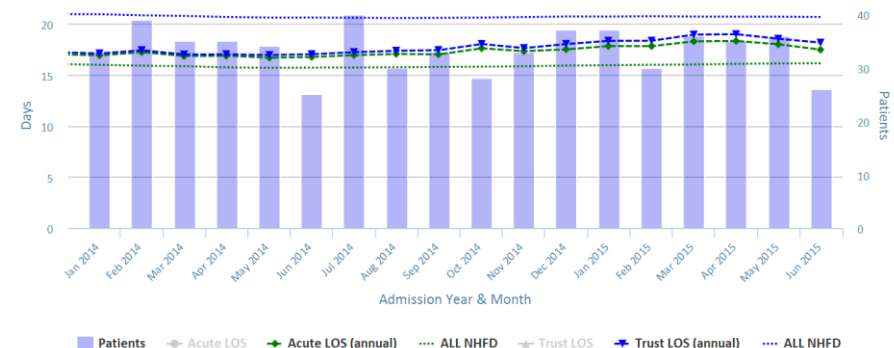


Chart data is indicative status only - www.nhfd.co.uk © Royal College of Physicians - Technology by Crown Informatics

Overall Performance - BAS. Basildon Hospital

NHFD Report - Averaged over 12 months (All Data) from April 2011 (Dual Axis)

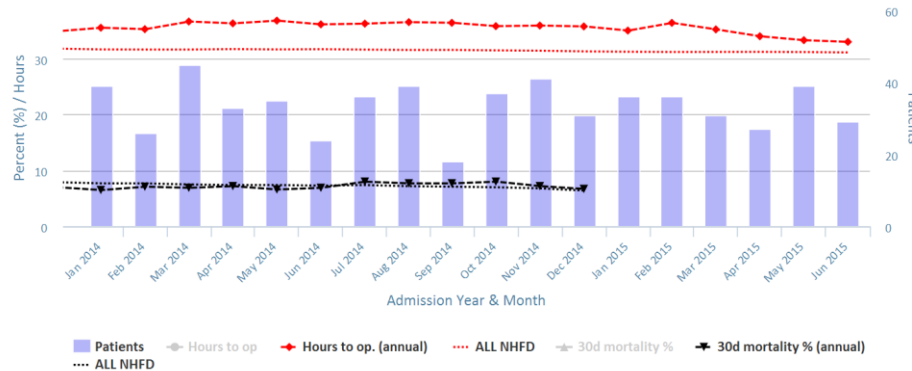


Chart data is indicative status only - www.nhfd.co.uk © Royal College of Physicians - Technology by Crown Informatics

Patient Safety - BAS. Basildon Hospital

NHFD Report - Averaged over 12 months from April 2011

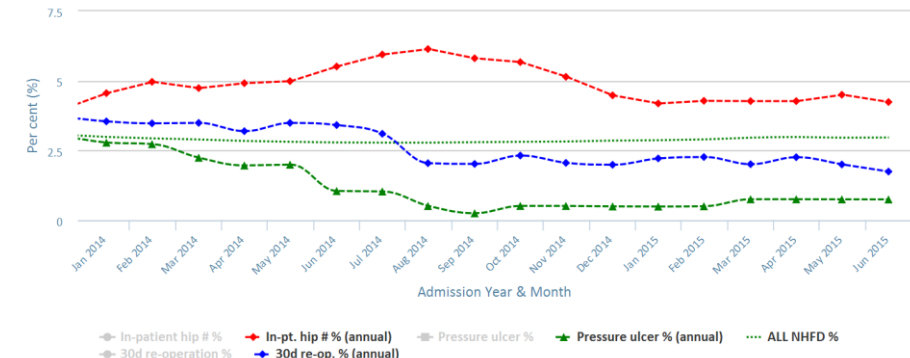


Chart data is indicative status only - www.nhfd.co.uk © Royal College of Physicians - Technology by Crown Informatics