



NHFD Dashboard 2015

Bassetlaw District General Hospital
(BSL)

Figures are hospital average percentages from 2013 and 2014. Data taken from the National Hip Fracture Database.

National Hip Fracture Database lead clinician:

Mehdi Zeraati

Ward Management

	2013	2014	Rating	Progress
Admitted to orthopaedic ward within 4 hours	41.9	38.9	○	↓
Mental test score recorded on admission	99.5	100.0	✓	-
Perioperative medical assessment	91.8	94.9	○	↑
Mobilised out of bed on the day after surgery (QS16-9)	No data	95.5	✓	
Received falls assessment (QS16-11)	100.0	100.0		-
Received bone health assessment (QS16-12)	100.0	100.0		-
Best practice tariff achievement	71.8	80.5	✓	↑

Surgery

	2013	2014	Rating	Progress
Surgery on day of, or day after, admission	76.9	79.5	○	↑
Proportion of general anaesthetic with nerve blocks	0.0	0.0	✗	-
Proportion of spinal anaesthetic with nerve blocks	0.6	0.0	✗	-
Proportion of arthroplasties which are cemented	63.0	100.0	✓	↑
Eligible displaced intracapsular fractures treated with THR	8.0	14.3	✗	↑
Intertrochanteric fractures treated with SHS	88.2	90.5	○	-
Subtrochanteric fractures treated with an IM nail	No data given	66.7	○	

Outcomes

	2013	2014	Rating	Progress
Case ascertainment	No data	76.5		
Overall hospital length of stay (days)	15.8	15.4	✓	-
Return to original residence within 30 days	52.0	61.7	✓	↑
Developed a pressure ulcer after presenting with hip fracture	0.0	5.6		↓
Pressure ulcer status not recorded	0.0	0.0	✓	-
Hip fractures which were sustained as an inpatient	No data	1.3		

Key

✓ Top Quartile

○ 2nd/3rd Quartile

✗ Lowest Quartile

↑ Performance improving - Performance broadly unchanged ↓ Performance declining



Run Charts

(Up to date, and interactive versions of all run charts for your hospital can be viewed at www.nhfd.co.uk)

Best Practice - BSL. Bassetlaw District General Hospital

Indicators supporting Best Practice Tariff (BPT) from April 2012

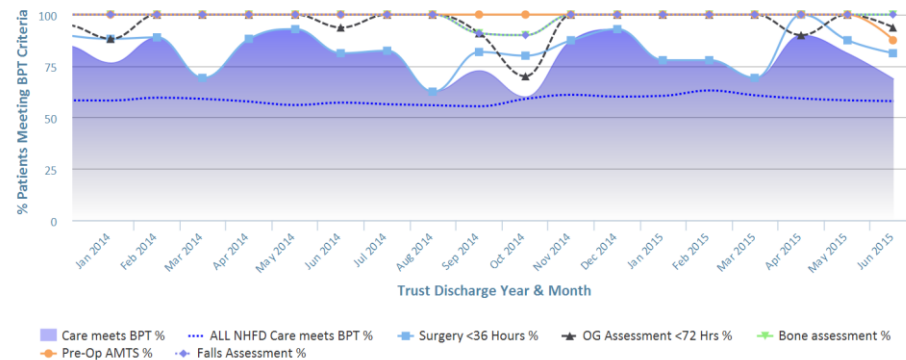


Chart data is indicative status only - © Royal College of Physicians - Technology by Crown Informatics (ID: BPT2)

Length of Stay - BSL. Bassetlaw District General Hospital

NHFD Report - Averaged over 12 months from April 2011

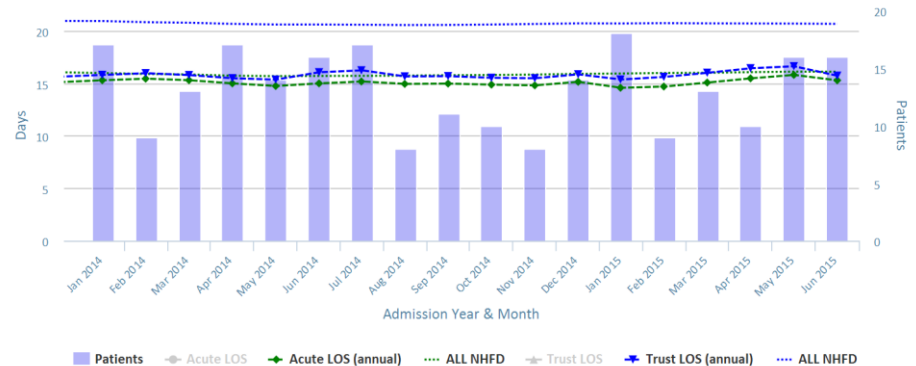


Chart data is indicative status only - www.nhfd.co.uk © Royal College of Physicians - Technology by Crown Informatics

Overall Performance - BSL. Bassetlaw District General Hospital

NHFD Report - Averaged over 12 months (All Data) from April 2011 (Dual Axis)

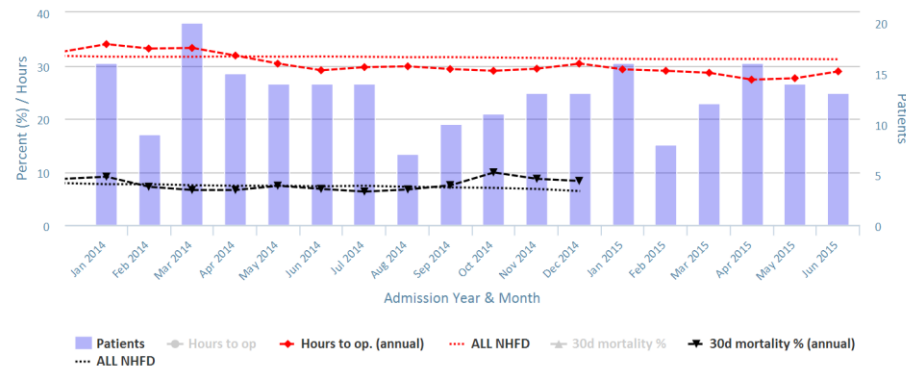


Chart data is indicative status only - www.nhfd.co.uk © Royal College of Physicians - Technology by Crown Informatics

Patient Safety - BSL. Bassetlaw District General Hospital

NHFD Report - Averaged over 12 months from April 2011

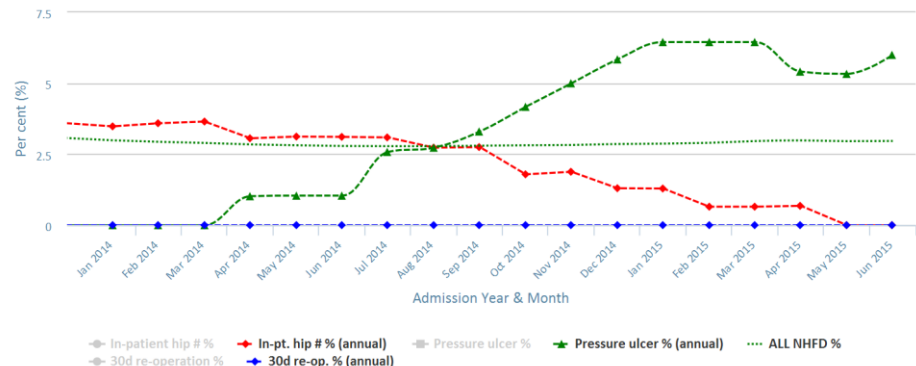


Chart data is indicative status only - www.nhfd.co.uk © Royal College of Physicians - Technology by Crown Informatics