



## NHFD Dashboard 2015

Ealing Hospital (EAL)

Figures are hospital average percentages from 2013 and 2014. Data taken from the National Hip Fracture Database.

National Hip Fracture Database lead clinician:

Johnny Swart

### Ward Management

|  | 2013    | 2014 | Rating | Progress |
|--|---------|------|--------|----------|
| Admitted to orthopaedic ward within 4 hours            | 12.3    | 10.5 | ✗      | -        |
| Mental test score recorded on admission                | 84.3    | 96.9 | ○      | ↑        |
| Perioperative medical assessment                       | 87.1    | 93.7 | ○      | ↑        |
| Mobilised out of bed on the day after surgery (QS16-9) | No data | 34.4 | ✗      |          |
| Received falls assessment (QS16-11)                    | 86.5    | 95.8 |        | ↑        |
| Received bone health assessment (QS16-12)              | 97.6    | 98.6 |        | -        |
| Best practice tariff achievement                       | 49.2    | 59.0 | ○      | ↑        |

### Surgery

|   | 2013 | 2014 | Rating | Progress |
|---|------|------|--------|----------|
| Surgery on day of, or day after, admission                  | 65.7 | 63.5 | ✗      | -        |
| Proportion of general anaesthetic with nerve blocks         | 35.6 | 32.6 | ○      | ↓        |
| Proportion of spinal anaesthetic with nerve blocks          | 15.1 | 7.3  | ✗      | ↓        |
| Proportion of arthroplasties which are cemented             | 52.6 | 38.6 | ✗      | ↓        |
| Eligible displaced intracapsular fractures treated with THR | 15.0 | 26.7 | ○      | ↑        |
| Intertrochanteric fractures treated with SHS                | 90.7 | 84.8 | ○      | ↓        |
| Subtrochanteric fractures treated with an IM nail           | 20.0 | 30.0 | ✗      | ↑        |

### Outcomes

|   | 2013    | 2014  | Rating | Progress |
|---|---------|-------|--------|----------|
| Case ascertainment  | No data | 100.0 |        |          |
| Overall hospital length of stay (days)                        | 22.5    | 27.3  | ✗      | ↓        |
| Return to original residence within 30 days                   | 0.0     | 40.9  | ✗      | ↑        |
| Developed a pressure ulcer after presenting with hip fracture | 2.4     | 2.8   |        | -        |
| Pressure ulcer status not recorded                            | 2.4     | 0.0   | ✓      | -        |
| Hip fractures which were sustained as an inpatient            | No data | 2.5   |        |          |

### Key

✓ Top Quartile

○ 2nd/3rd Quartile

✗ Lowest Quartile



Performance improving

- Performance broadly unchanged



Performance declining



### Run Charts

(Up to date, and interactive versions of all run charts for your hospital can be viewed at [www.nhfd.co.uk](http://www.nhfd.co.uk))

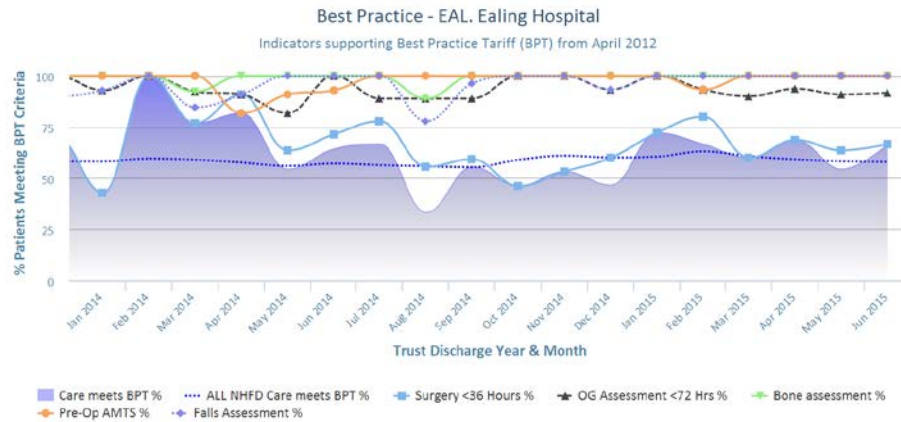


Chart data is indicative status only - © Royal College of Physicians - Technology by Crown Informatics (ID: BPT2)

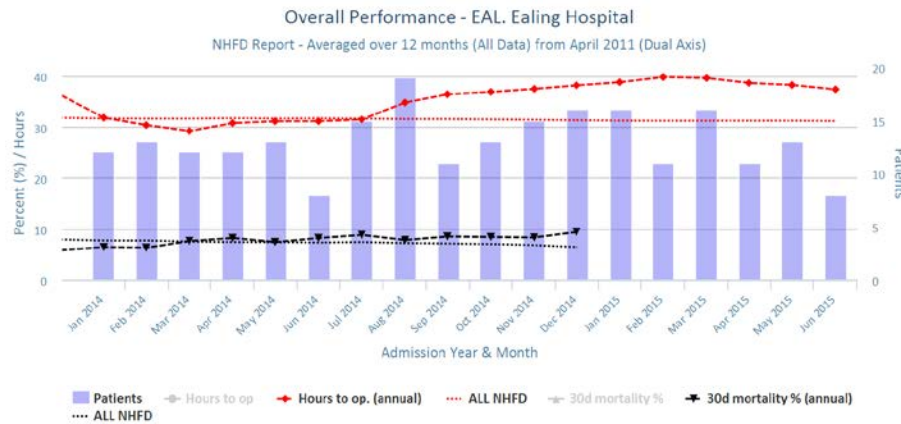


Chart data is indicative status only - www.nhfd.co.uk © Royal College of Physicians - Technology by Crown Informatics

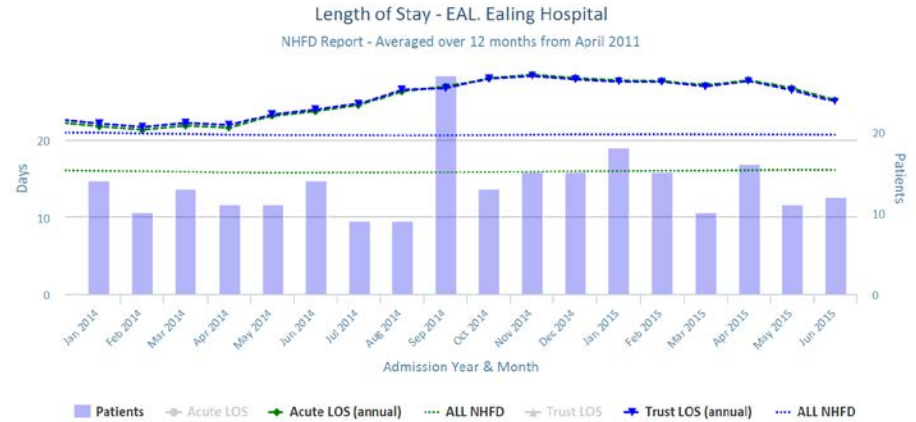


Chart data is indicative status only - www.nhfd.co.uk © Royal College of Physicians - Technology by Crown Informatics



Chart data is indicative status only - www.nhfd.co.uk © Royal College of Physicians - Technology by Crown Informatics