



NHFD Dashboard 2015

Queen Elizabeth II Hospital (ENH)

Figures are hospital average percentages from 2013 and 2014. Data taken from the National Hip Fracture Database.

National Hip Fracture Database lead clinician:

Nick de Roeck

Ward Management

| | 2013 | 2014 | Rating | Progress |
|--|---------|-------|--------|----------|
| Admitted to orthopaedic ward within 4 hours | 71.7 | 69.0 | ✓ | ↓ |
| Mental test score recorded on admission | 99.3 | 100.0 | ✓ | - |
| Perioperative medical assessment | 96.7 | 97.0 | ✓ | - |
| Mobilised out of bed on the day after surgery (QS16-9) | No data | 84.8 | ○ | |
| Received falls assessment (QS16-11) | 99.8 | 99.8 | | - |
| Received bone health assessment (QS16-12) | 99.5 | 99.8 | | - |
| Best practice tariff achievement | 67.2 | 74.7 | ✓ | ↑ |

Surgery

| | 2013 | 2014 | Rating | Progress |
|---|-------|------|--------|----------|
| Surgery on day of, or day after, admission | 64.8 | 75.7 | ○ | ↑ |
| Proportion of general anaesthetic with nerve blocks | 42.1 | 39.7 | ○ | - |
| Proportion of spinal anaesthetic with nerve blocks | 8.0 | 18.5 | ○ | ↑ |
| Proportion of arthroplasties which are cemented | 80.4 | 84.4 | ○ | ↑ |
| Eligible displaced intracapsular fractures treated with THR | 32.0 | 36.5 | ✓ | ↑ |
| Intertrochanteric fractures treated with SHS | 98.8 | 98.9 | ✓ | - |
| Subtrochanteric fractures treated with an IM nail | 100.0 | 86.7 | ○ | ↓ |

Outcomes

| | 2013 | 2014 | Rating | Progress |
|---|---------|-------|--------|----------|
| Case ascertainment | No data | 109.5 | | |
| Overall hospital length of stay (days) | 20.1 | 16.5 | ○ | ↑ |
| Return to original residence within 30 days | 45.9 | 48.9 | ○ | ↑ |
| Developed a pressure ulcer after presenting with hip fracture | 1.2 | 1.2 | | - |
| Pressure ulcer status not recorded | 0.2 | 0.0 | ✓ | - |
| Hip fractures which were sustained as an inpatient | No data | 1.3 | | |

Key

✓ Top Quartile

○ 2nd/3rd Quartile

✗ Lowest Quartile



Performance improving

- Performance broadly unchanged



Performance declining



Run Charts

(Up to date, and interactive versions of all run charts for your hospital can be viewed at www.nhfd.co.uk)

Best Practice - ENH. East and North Herts Hospital
Indicators supporting Best Practice Tariff (BPT) from April 2012

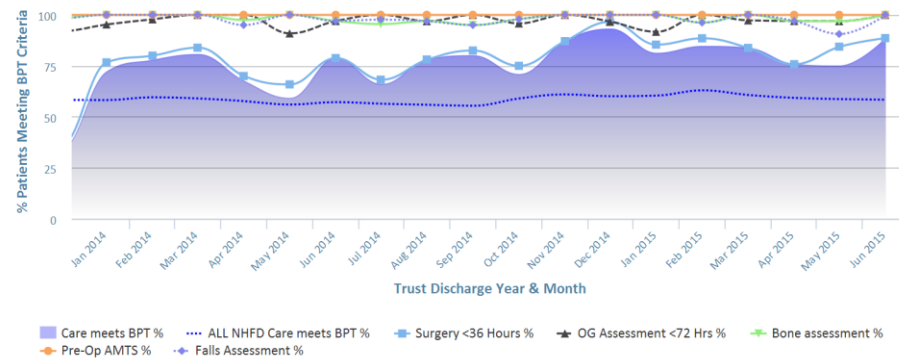


Chart data is indicative status only - © Royal College of Physicians - Technology by Crown Informatics (ID: BPT2)

Length of Stay - ENH. East and North Herts Hospital
NHFD Report - Averaged over 12 months from April 2011

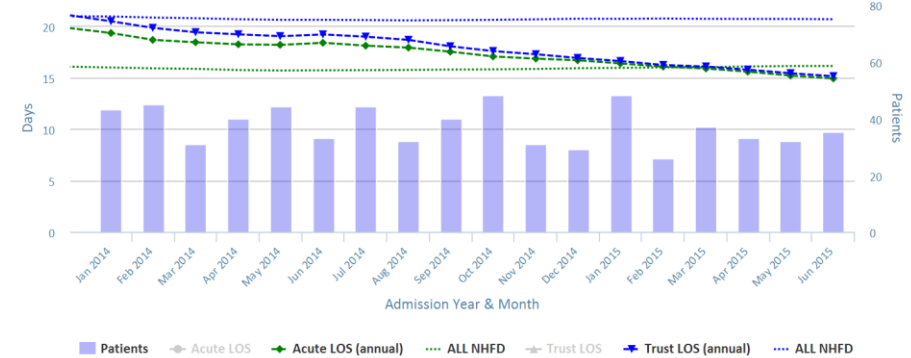


Chart data is indicative status only - www.nhfd.co.uk © Royal College of Physicians - Technology by Crown Informatics

Overall Performance - ENH. East and North Herts Hospital
NHFD Report - Averaged over 12 months (All Data) from April 2011 (Dual Axis)

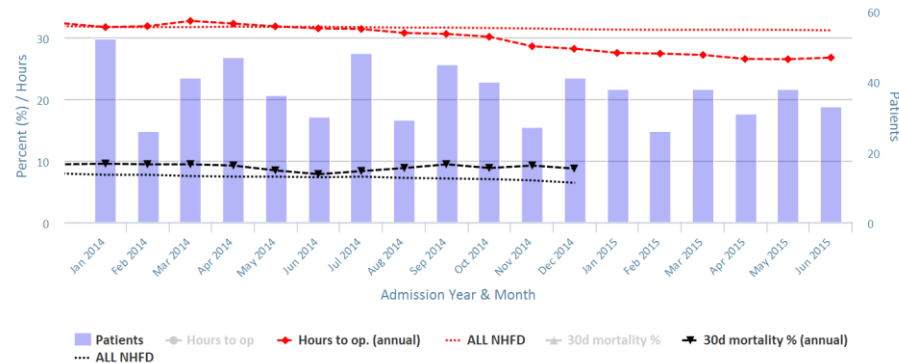


Chart data is indicative status only - www.nhfd.co.uk © Royal College of Physicians - Technology by Crown Informatics

Patient Safety - ENH. East and North Herts Hospital
NHFD Report - Averaged over 12 months from April 2011

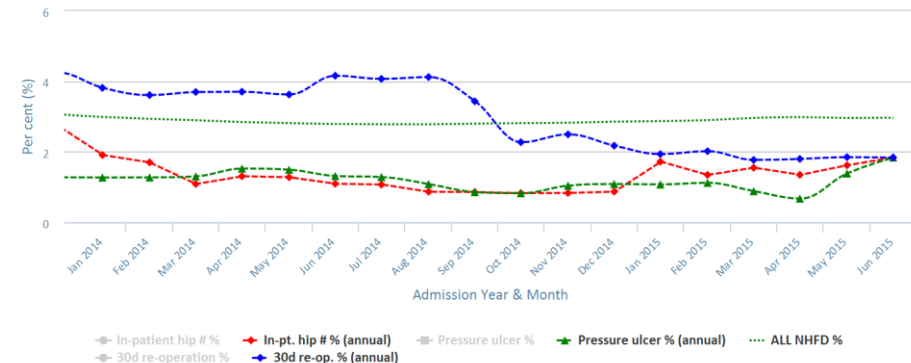


Chart data is indicative status only - www.nhfd.co.uk © Royal College of Physicians - Technology by Crown Informatics