



## NHFD Dashboard 2015

Diana, Princess of Wales Hospital  
(GGH)

Figures are hospital average percentages from 2013 and 2014. Data taken from the National Hip Fracture Database.

National Hip Fracture Database lead clinician:

Daniel Omonbude

### Ward Management

	2013	2014	Rating	Progress
Admitted to orthopaedic ward within 4 hours	58.3	59.1	○	-
Mental test score recorded on admission	89.4	91.4	✗	-
Perioperative medical assessment	84.6	90.3	○	↑
Mobilised out of bed on the day after surgery (QS16-9)	No data	50.7	✗	-
Received falls assessment (QS16-11)	100.0	100.0		-
Received bone health assessment (QS16-12)	99.1	99.2		-
Best practice tariff achievement	47.1	58.0	○	↑

### Surgery

	2013	2014	Rating	Progress
Surgery on day of, or day after, admission	60.2	69.9	○	↑
Proportion of general anaesthetic with nerve blocks	56.3	63.8	○	↑
Proportion of spinal anaesthetic with nerve blocks	53.5	50.7	✓	↓
Proportion of arthroplasties which are cemented	75.3	72.8	✗	-
Eligible displaced intracapsular fractures treated with THR	43.3	40.7	✓	↓
Intertrochanteric fractures treated with SHS	66.2	85.7	○	↑
Subtrochanteric fractures treated with an IM nail	No data given	91.7	○	

### Outcomes

	2013	2014	Rating	Progress
Case ascertainment	No data	86.2		
Overall hospital length of stay (days)	13.3	15.1	✓	-
Return to original residence within 30 days	66.7	68.2	✓	-
Developed a pressure ulcer after presenting with hip fracture	10.9	8.9		↑
Pressure ulcer status not recorded	0.9	0.4	✓	-
Hip fractures which were sustained as an inpatient	No data	2.2		

### Key

✓ Top Quartile

○ 2nd/3rd Quartile

✗ Lowest Quartile

↑ Performance improving - Performance broadly unchanged ↓ Performance declining



### Run Charts

(Up to date, and interactive versions of all run charts for your hospital can be viewed at [www.nhfd.co.uk](http://www.nhfd.co.uk))

Best Practice - GGH. Diana, Princess of Wales Hospital

Indicators supporting Best Practice Tariff (BPT) from April 2012

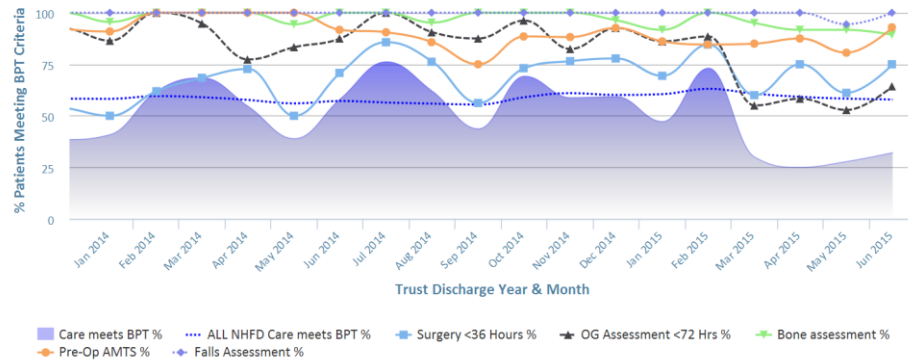


Chart data is indicative status only - © Royal College of Physicians - Technology by Crown Informatics (ID: BPT2)

Length of Stay - GGH. Diana, Princess of Wales Hospital

NHFD Report - Averaged over 12 months from April 2011

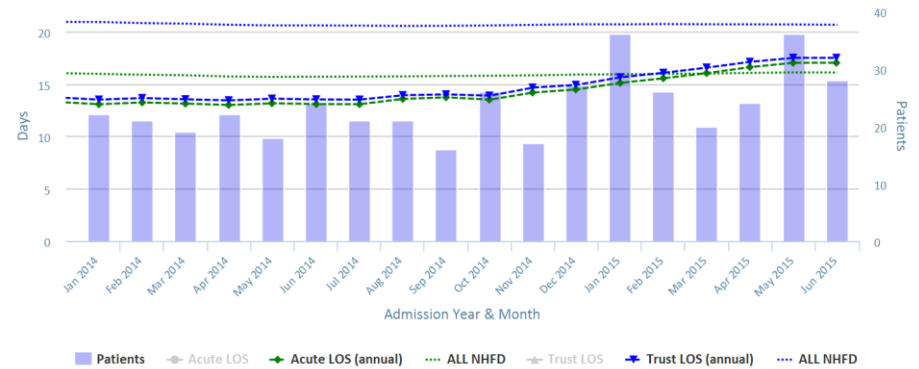


Chart data is indicative status only - www.nhfd.co.uk © Royal College of Physicians - Technology by Crown Informatics

Overall Performance - GGH. Diana, Princess of Wales Hospital

NHFD Report - Averaged over 12 months (All Data) from April 2011 (Dual Axis)

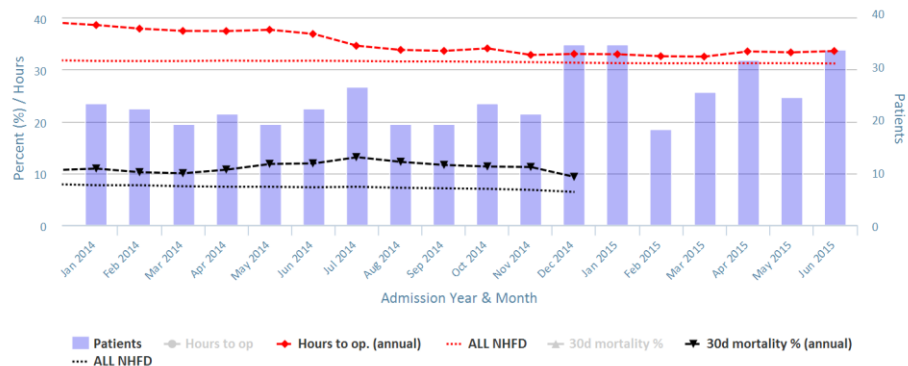


Chart data is indicative status only - www.nhfd.co.uk © Royal College of Physicians - Technology by Crown Informatics

Patient Safety - GGH. Diana, Princess of Wales Hospital

NHFD Report - Averaged over 12 months from April 2011

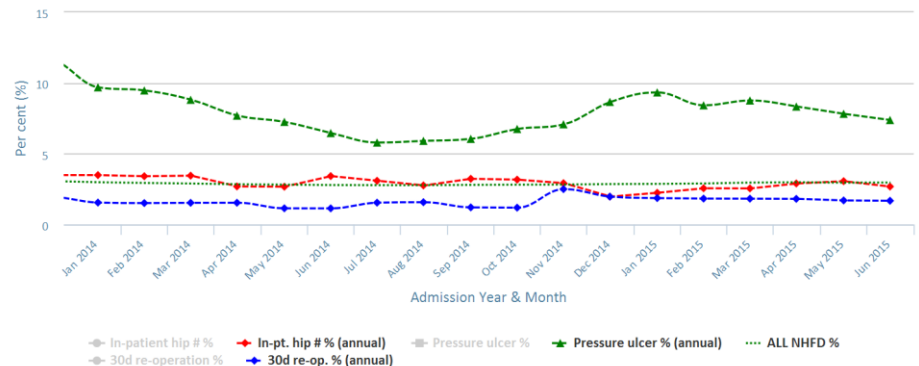


Chart data is indicative status only - www.nhfd.co.uk © Royal College of Physicians - Technology by Crown Informatics