



NHFD Dashboard 2015

Good Hope Hospital (GHS)

Figures are hospital average percentages from 2013 and 2014. Data taken from the National Hip Fracture Database.

National Hip Fracture Database lead clinician:

Helen Chamberlain

Ward Management

	2013	2014	Rating	Progress
Admitted to orthopaedic ward within 4 hours	27.7	54.8	○	↑
Mental test score recorded on admission	90.2	79.6	✗	↓
Perioperative medical assessment	79.5	82.9	○	↑
Mobilised out of bed on the day after surgery (QS16-9)	No data	99.6	✓	
Received falls assessment (QS16-11)	96.4	99.6		↑
Received bone health assessment (QS16-12)	97.0	99.3		-
Best practice tariff achievement	43.4	46.6	✗	↑

Surgery

	2013	2014	Rating	Progress
Surgery on day of, or day after, admission	71.3	68.8	○	-
Proportion of general anaesthetic with nerve blocks	85.8	22.9	✗	↓
Proportion of spinal anaesthetic with nerve blocks	71.8	30.0	○	↓
Proportion of arthroplasties which are cemented	10.5	35.3	✗	↑
Eligible displaced intracapsular fractures treated with THR	17.9	11.4	✗	↓
Intertrochanteric fractures treated with SHS	94.4	94.8	✓	-
Subtrochanteric fractures treated with an IM nail	70.0	53.3	✗	↓

Outcomes

	2013	2014	Rating	Progress
Case ascertainment	No data	77.4		
Overall hospital length of stay (days)	17.4	19.8	○	
Return to original residence within 30 days	63.2	57.6	○	↓
Developed a pressure ulcer after presenting with hip fracture	2.4	0.4		↑
Pressure ulcer status not recorded	0.3	0.0	✓	-
Hip fractures which were sustained as an inpatient	No data	1.0		

Key

✓ Top Quartile

○ 2nd/3rd Quartile

✗ Lowest Quartile

↑ Performance improving - Performance broadly unchanged ↓ Performance declining



Run Charts

(Up to date, and interactive versions of all run charts for your hospital can be viewed at www.nhfd.co.uk)

Best Practice - GHS. Good Hope General Hospital

Indicators supporting Best Practice Tariff (BPT) from April 2012

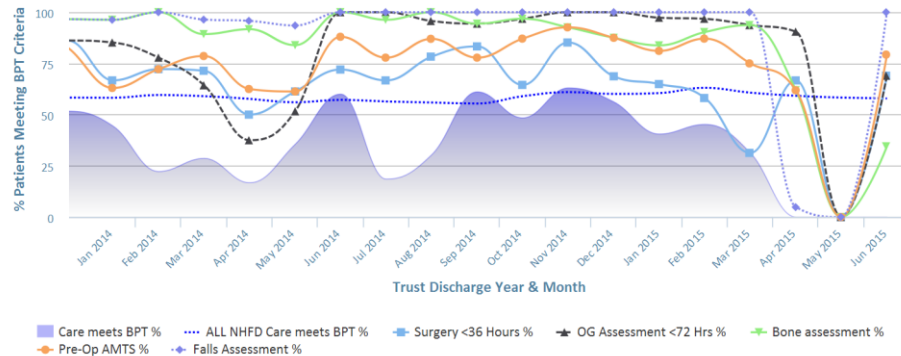


Chart data is indicative status only - © Royal College of Physicians - Technology by Crown Informatics (ID: BPT2)

Length of Stay - GHS. Good Hope General Hospital

NHFD Report - Averaged over 12 months from April 2011

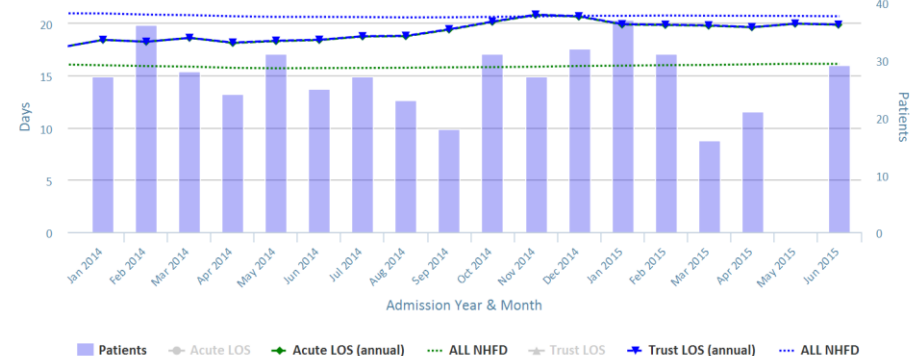


Chart data is indicative status only - www.nhfd.co.uk © Royal College of Physicians - Technology by Crown Informatics

Overall Performance - GHS. Good Hope General Hospital

NHFD Report - Averaged over 12 months (All Data) from April 2011 (Dual Axis)

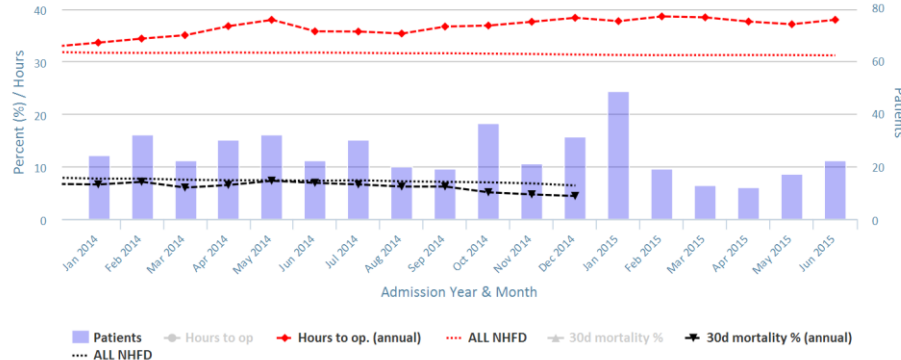


Chart data is indicative status only - www.nhfd.co.uk © Royal College of Physicians - Technology by Crown Informatics

Patient Safety - GHS. Good Hope General Hospital

NHFD Report - Averaged over 12 months from April 2011

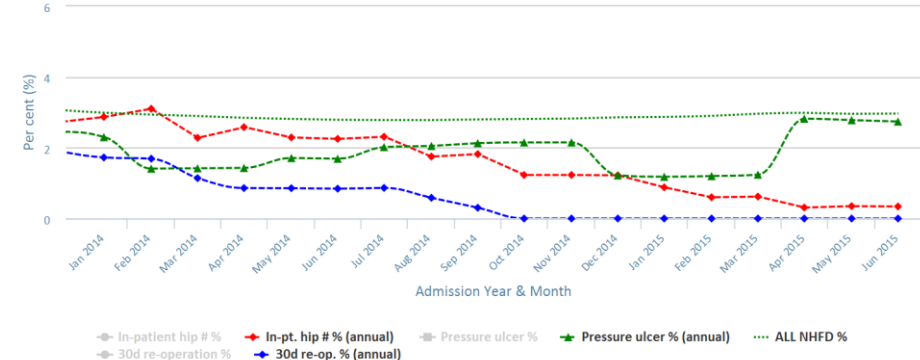


Chart data is indicative status only - www.nhfd.co.uk © Royal College of Physicians - Technology by Crown Informatics