



NHFD Dashboard 2015

Grantham And District General
Hospital (GRA)

Figures are hospital average percentages from 2013 and 2014. Data taken from the National Hip Fracture Database.

National Hip Fracture Database lead clinician:

Ahmed Othman

Ward Management

	2013	2014	Rating	Progress
Admitted to orthopaedic ward within 4 hours	70.6	55.2	○	↓
Mental test score recorded on admission	78.8	87.9	×	↑
Perioperative medical assessment	47.5	34.5	×	↓
Mobilised out of bed on the day after surgery (QS16-9)	No data	81.6	○	
Received falls assessment (QS16-11)	54.3	59.6		↑
Received bone health assessment (QS16-12)	45.7	63.2		↑
Best practice tariff achievement	29.9	29.7	×	-

Surgery

	2013	2014	Rating	Progress
Surgery on day of, or day after, admission	82.8	93.1	✓	↑
Proportion of general anaesthetic with nerve blocks	61.9	77.3	○	↑
Proportion of spinal anaesthetic with nerve blocks	84.5	74.2	✓	↓
Proportion of arthroplasties which are cemented	95.2	87.0	○	↓
Eligible displaced intracapsular fractures treated with THR	26.7	40.0	✓	↑
Intertrochanteric fractures treated with SHS	97.0	95.7	✓	-
Subtrochanteric fractures treated with an IM nail	0.0	0.0	×	-

Outcomes

	2013	2014	Rating	Progress
Case ascertainment	No data	36.0		
Overall hospital length of stay (days)	13.6	14.5	✓	-
Return to original residence within 30 days	0.0	64.6	✓	↑
Developed a pressure ulcer after presenting with hip fracture	4.3	0.0		↑
Pressure ulcer status not recorded	38.3	20.7	×	↑
Hip fractures which were sustained as an inpatient	No data	0.0		

Key

✓ Top Quartile

○ 2nd/3rd Quartile

× Lowest Quartile



Performance improving

- Performance broadly unchanged



Performance declining



Run Charts

(Up to date, and interactive versions of all run charts for your hospital can be viewed at www.nhfd.co.uk)

Best Practice - GRA. Grantham And District General Hospital

Indicators supporting Best Practice Tariff (BPT) from April 2012

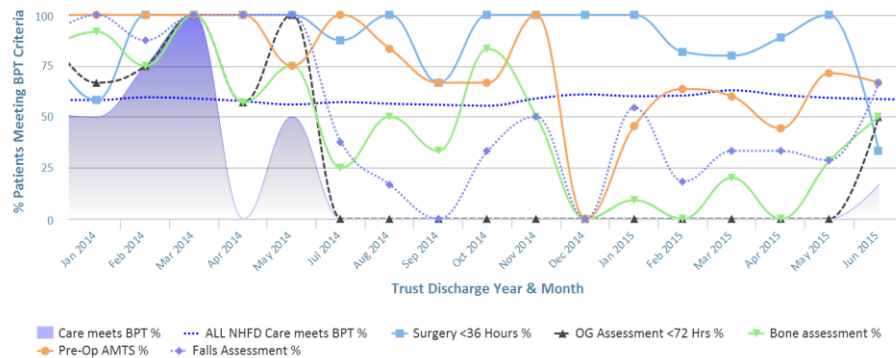


Chart data is indicative status only - © Royal College of Physicians - Technology by Crown Informatics (ID: BPT2)

Length of Stay - GRA. Grantham And District General Hospital

NHFD Report - Averaged over 12 months from April 2011

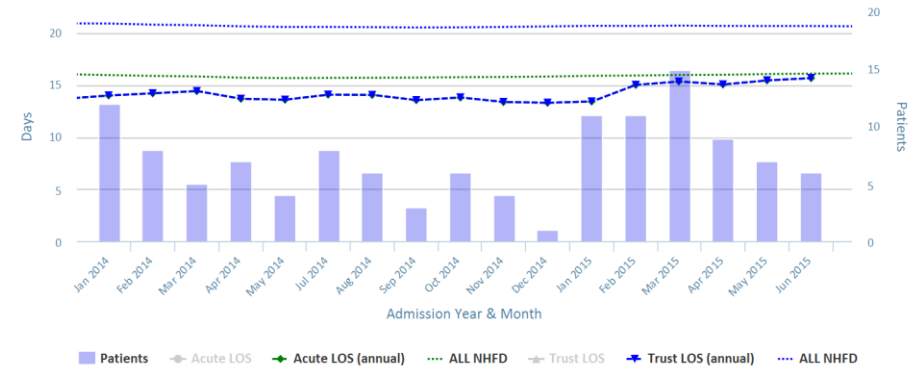


Chart data is indicative status only - www.nhfd.co.uk © Royal College of Physicians - Technology by Crown Informatics

Overall Performance - GRA. Grantham And District General Hospital

NHFD Report - Averaged over 12 months (All Data) from April 2011 (Dual Axis)

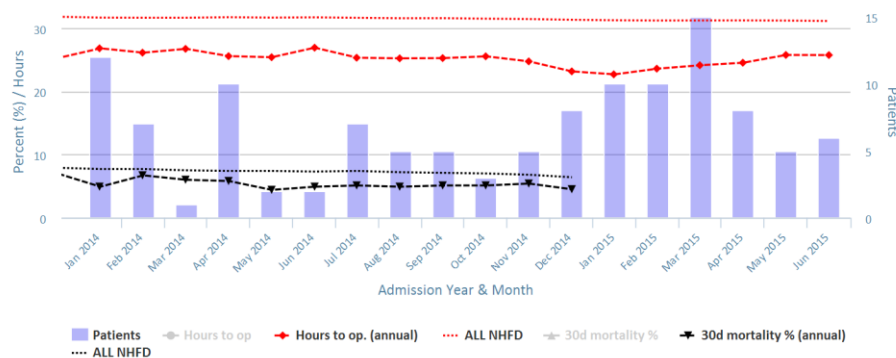


Chart data is indicative status only - www.nhfd.co.uk © Royal College of Physicians - Technology by Crown Informatics

Patient Safety - GRA. Grantham And District General Hospital

NHFD Report - Averaged over 12 months from April 2011

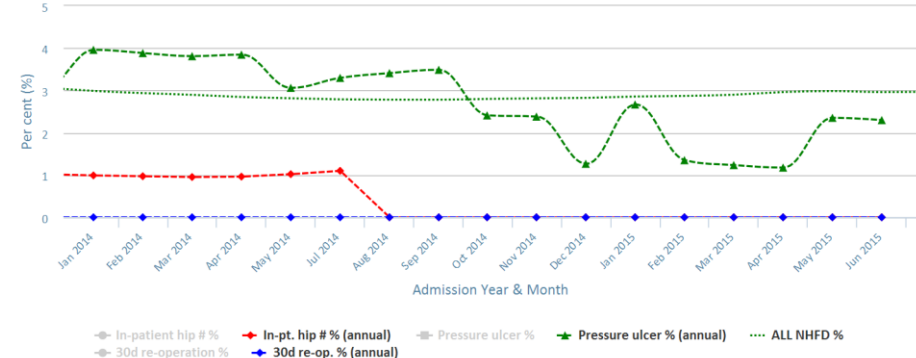


Chart data is indicative status only - www.nhfd.co.uk © Royal College of Physicians - Technology by Crown Informatics