



## NHFD Dashboard 2015

Royal Gwent Hospital (GWE)

Figures are hospital average percentages from 2013 and 2014. Data taken from the National Hip Fracture Database.

National Hip Fracture Database lead clinician:

Aled Evans

### Ward Management

	2013	2014	Rating	Progress
Admitted to orthopaedic ward within 4 hours	11.2	12.0	✗	-
Mental test score recorded on admission	45.3	50.7	✗	↑
Perioperative medical assessment	15.9	18.1	✗	-
Mobilised out of bed on the day after surgery (QS16-9)	No data	65.1	○	-
Received falls assessment (QS16-11)	85.2	86.5		-
Received bone health assessment (QS16-12)	85.2	80.6		↓

### Surgery

	2013	2014	Rating	Progress
Surgery on day of, or day after, admission	55.3	61.3	✗	↑
Proportion of general anaesthetic with nerve blocks	54.7	61.8	○	↑
Proportion of spinal anaesthetic with nerve blocks	29.7	51.1	✓	↑
Proportion of arthroplasties which are cemented	92.1	90.0	○	-
Eligible displaced intracapsular fractures treated with THR	5.0	15.6	✗	↑
Intertrochanteric fractures treated with SHS	78.8	73.3	✗	↓
Subtrochanteric fractures treated with an IM nail	92.6	71.4	○	↓

### Outcomes

	2013	2014	Rating	Progress
Case ascertainment	No data	74.5		
Overall hospital length of stay (days)	43.6	39.4	✗	↑
Return to original residence within 30 days	47.4	50.6	○	↑
Developed a pressure ulcer after presenting with hip fracture	1.6	4.0		↓
Pressure ulcer status not recorded	24.2	6.6	✗	↑
Hip fractures which were sustained as an inpatient	No data	10.7		

### Key

✓ Top Quartile

○ 2nd/3rd Quartile

✗ Lowest Quartile



Performance improving

- Performance broadly unchanged



Performance declining



### Run Charts

(Up to date and interactive versions of all run charts for your hospital can be viewed at [www.nhfd.co.uk](http://www.nhfd.co.uk))

#### Best Practice - GWE. Royal Gwent Hospital

Indicators supporting Best Practice Tariff (BPT) from April 2012

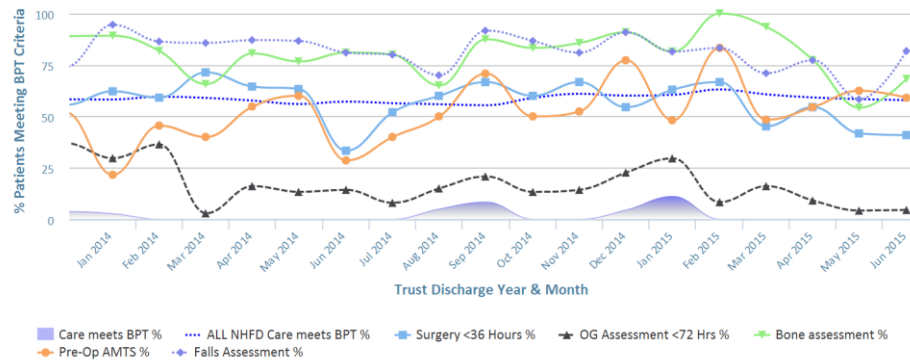


Chart data is indicative status only - © Royal College of Physicians - Technology by Crown Informatics (ID: BPT2)

#### Length of Stay - GWE. Royal Gwent Hospital

NHFD Report - Averaged over 12 months from April 2011

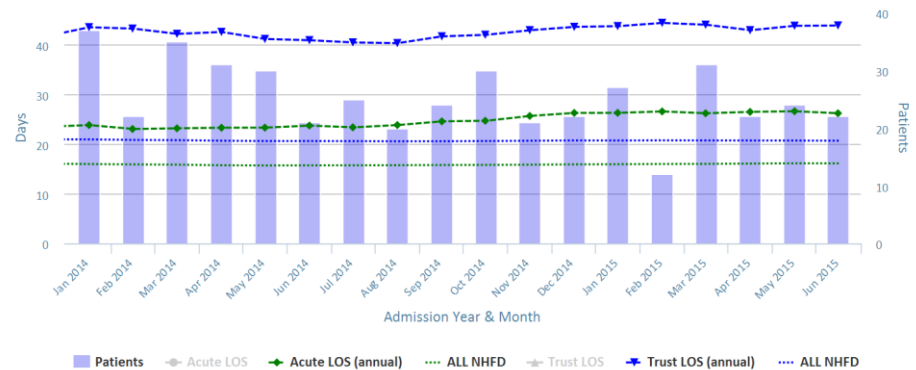


Chart data is indicative status only - www.nhfd.co.uk © Royal College of Physicians - Technology by Crown Informatics

#### Overall Performance - GWE. Royal Gwent Hospital

NHFD Report - Averaged over 12 months (All Data) from April 2011 (Dual Axis)

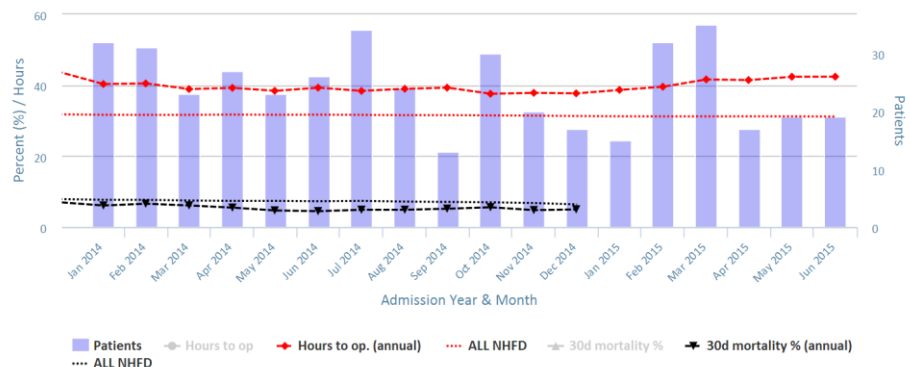


Chart data is indicative status only - www.nhfd.co.uk © Royal College of Physicians - Technology by Crown Informatics

#### Patient Safety - GWE. Royal Gwent Hospital

NHFD Report - Averaged over 12 months from April 2011

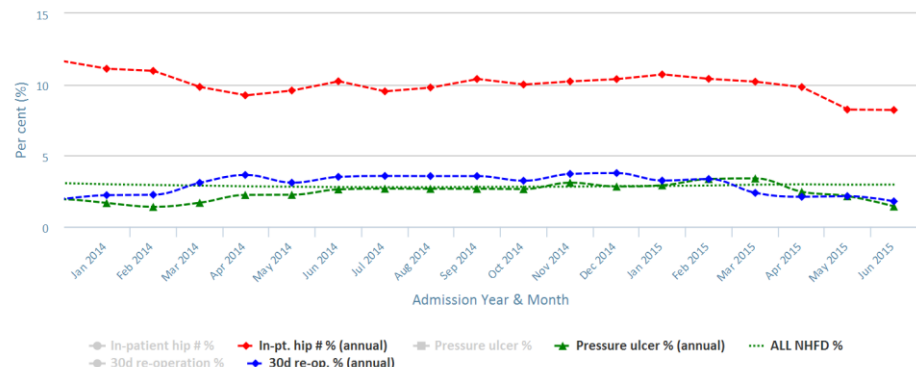


Chart data is indicative status only - www.nhfd.co.uk © Royal College of Physicians - Technology by Crown Informatics