



NHFD Dashboard 2015

Huddersfield Royal Infirmary (HUD)

Figures are hospital average percentages from 2013 and 2014. Data taken from the National Hip Fracture Database.

National Hip Fracture Database lead clinician:

Ben Brooke

Ward Management

	2013	2014	Rating	Progress
Admitted to orthopaedic ward within 4 hours	56.2	52.7	○	↓
Mental test score recorded on admission	90.1	92.5	×	-
Perioperative medical assessment	65.9	73.8	×	↑
Mobilised out of bed on the day after surgery (QS16-9)	No data	74.9	○	
Received falls assessment (QS16-11)	24.6	67.5		↑
Received bone health assessment (QS16-12)	84.1	86.3		-
Best practice tariff achievement	6.1	27.9	×	↑

Surgery

	2013	2014	Rating	Progress
Surgery on day of, or day after, admission	62.4	58.5	×	↓
Proportion of general anaesthetic with nerve blocks	49.0	48.3	○	-
Proportion of spinal anaesthetic with nerve blocks	13.1	25.8	○	↑
Proportion of arthroplasties which are cemented	68.6	91.2	○	↑
Eligible displaced intracapsular fractures treated with THR	5.0	25.3	○	↑
Intertrochanteric fractures treated with SHS	66.5	63.5	×	↓
Subtrochanteric fractures treated with an IM nail	92.1	100.0	✓	↑

Outcomes

	2013	2014	Rating	Progress
Case ascertainment	No data	100.6		
Overall hospital length of stay (days)	24.6	24.7	×	-
Return to original residence within 30 days	37.4	42.9	×	↑
Developed a pressure ulcer after presenting with hip fracture	2.1	3.0		-
Pressure ulcer status not recorded	1.4	0.0	✓	-
Hip fractures which were sustained as an inpatient	No data	5.2		

Key

✓ Top Quartile

○ 2nd/3rd Quartile

× Lowest Quartile

↑ Performance improving - Performance broadly unchanged ↓ Performance declining



Run Charts

(Up to date, and interactive versions of all run charts for your hospital can be viewed at www.nhfd.co.uk)

Best Practice - HUD. Huddersfield Royal Infirmary

Indicators supporting Best Practice Tariff (BPT) from April 2012

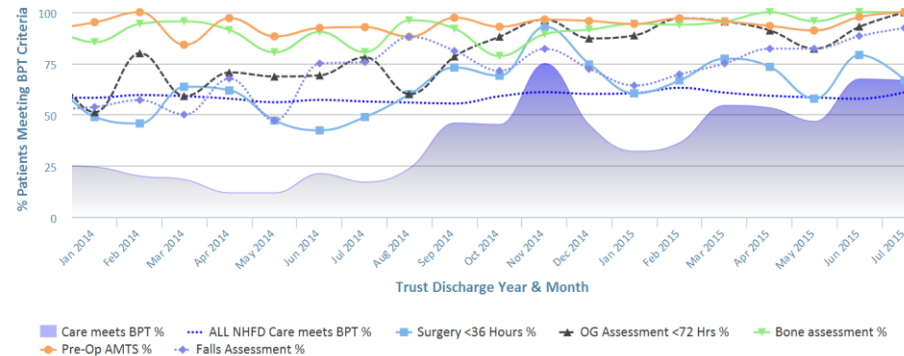


Chart data is indicative status only - © Royal College of Physicians - Technology by Crown Informatics (ID: BPT2)

Length of Stay - HUD. Huddersfield Royal Infirmary

NHFD Report - Averaged over 12 months from April 2011

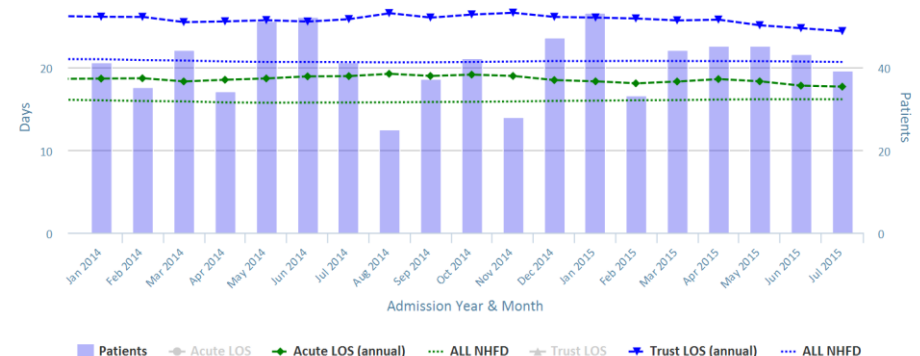


Chart data is indicative status only - www.nhfd.co.uk © Royal College of Physicians - Technology by Crown Informatics

Overall Performance - HUD. Huddersfield Royal Infirmary

NHFD Report - Averaged over 12 months (All Data) from April 2011 (Dual Axis)

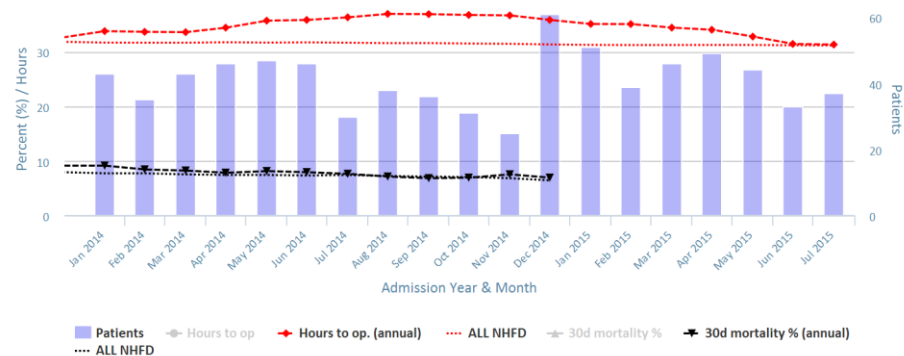


Chart data is indicative status only - www.nhfd.co.uk © Royal College of Physicians - Technology by Crown Informatics

Patient Safety - HUD. Huddersfield Royal Infirmary

NHFD Report - Averaged over 12 months from April 2011



Chart data is indicative status only - www.nhfd.co.uk © Royal College of Physicians - Technology by Crown Informatics