



NHFD Dashboard 2015

Leicester Royal Infirmary (LER)

Figures are hospital average percentages from 2013 and 2014. Data taken from the National Hip Fracture Database.

National Hip Fracture Database lead clinician:

John Davison

Ward Management

	2013	2014	Rating	Progress
Admitted to orthopaedic ward within 4 hours	25.1	23.6	✗	-
Mental test score recorded on admission	92.0	93.5	✗	-
Perioperative medical assessment	92.2	82.1	○	↓
Mobilised out of bed on the day after surgery (QS16-9)	No data	73.5	○	
Received falls assessment (QS16-11)	96.8	90.6		↓
Received bone health assessment (QS16-12)	88.8	90.3		-
Best practice tariff achievement	47.3	39.6	✗	↓

Surgery

	2013	2014	Rating	Progress
Surgery on day of, or day after, admission	66.6	60.3	✗	↓
Proportion of general anaesthetic with nerve blocks	67.5	71.8	○	↑
Proportion of spinal anaesthetic with nerve blocks	29.2	36.9	✓	↑
Proportion of arthroplasties which are cemented	98.1	98.5	✓	-
Eligible displaced intracapsular fractures treated with THR	8.5	8.0	✗	-
Intertrochanteric fractures treated with SHS	65.4	71.8	✗	↑
Subtrochanteric fractures treated with an IM nail	91.3	76.7	○	↓

Outcomes

	2013	2014	Rating	Progress
Case ascertainment	No data	95.7		
Overall hospital length of stay (days)	17.4	13.7	✓	↑
Return to original residence within 30 days	36.4	41.4	✗	↑
Developed a pressure ulcer after presenting with hip fracture	1.7	3.0		↓
Pressure ulcer status not recorded	6.7	9.0	✗	-
Hip fractures which were sustained as an inpatient	No data	9.3		

Key

✓ Top Quartile

○ 2nd/3rd Quartile

✗ Lowest Quartile



Performance improving

- Performance broadly unchanged



Performance declining



Run Charts

(Up to date, and interactive versions of all run charts for your hospital can be viewed at www.nhfd.co.uk)

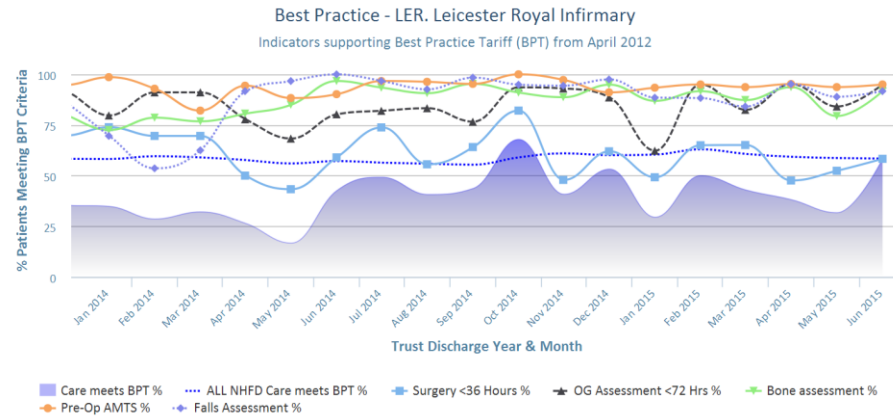


Chart data is indicative status only - © Royal College of Physicians - Technology by Crown Informatics (ID: BPT2)

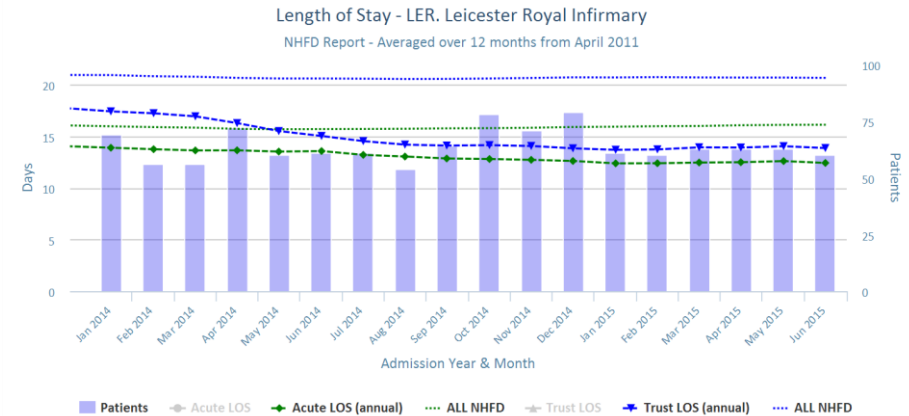


Chart data is indicative status only - www.nhfd.co.uk © Royal College of Physicians - Technology by Crown Informatics

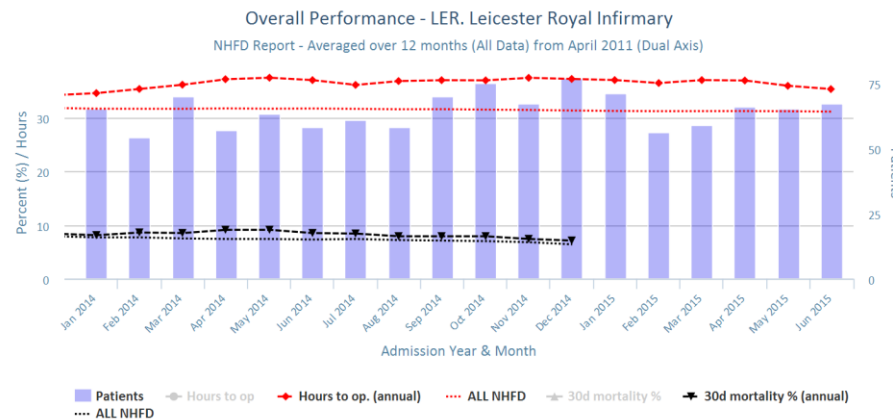


Chart data is indicative status only - www.nhfd.co.uk © Royal College of Physicians - Technology by Crown Informatics

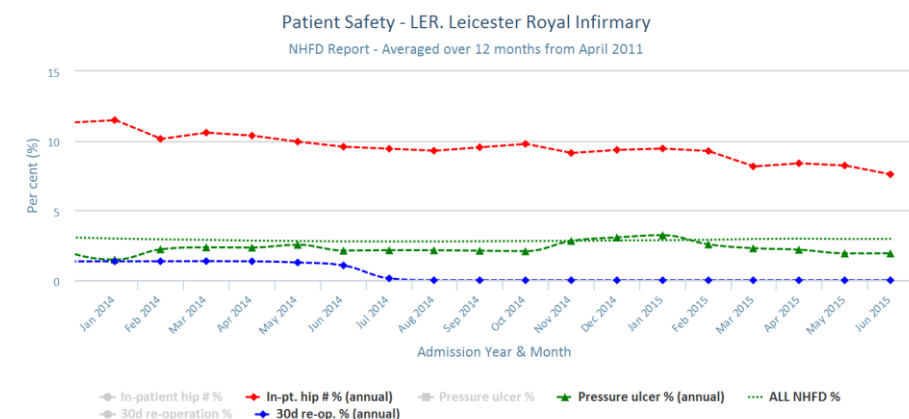


Chart data is indicative status only - www.nhfd.co.uk © Royal College of Physicians - Technology by Crown Informatics