



NHFD Dashboard 2015

New Cross Hospital (NCR)

Figures are hospital average percentages from 2013 and 2014. Data taken from the National Hip Fracture Database.

National Hip Fracture Database lead clinician:

Adrian Simons

Ward Management

	2013	2014	Rating	Progress
Admitted to orthopaedic ward within 4 hours	29.9	24.4	✗	↓
Mental test score recorded on admission	93.4	89.1	✗	↓
Perioperative medical assessment	91.6	86.9	○	↓
Mobilised out of bed on the day after surgery (QS16-9)	No data	75.6	○	
Received falls assessment (QS16-11)	94.7	82.9		↓
Received bone health assessment (QS16-12)	96.9	94.6		-
Best practice tariff achievement	65.0	47.5	✗	↓

Surgery

	2013	2014	Rating	Progress
Surgery on day of, or day after, admission	79.0	83.5	✓	↑
Proportion of general anaesthetic with nerve blocks	42.2	41.9	○	-
Proportion of spinal anaesthetic with nerve blocks	4.3	8.0	✗	↑
Proportion of arthroplasties which are cemented	33.7	30.4	✗	↓
Eligible displaced intracapsular fractures treated with THR	36.2	24.5	○	↓
Intertrochanteric fractures treated with SHS	89.3	86.9	○	-
Subtrochanteric fractures treated with an IM nail	76.9	94.7	✓	↑

Outcomes

	2013	2014	Rating	Progress
Case ascertainment	No data	89.3		
Overall hospital length of stay (days)	17.1	19.3	○	-
Return to original residence within 30 days	42.2	49.6	○	↑
Developed a pressure ulcer after presenting with hip fracture	9.8	10.0		-
Pressure ulcer status not recorded	0.0	7.2	✗	↓
Hip fractures which were sustained as an inpatient	No data	5.3		

Key

✓ Top Quartile

○ 2nd/3rd Quartile

✗ Lowest Quartile



Performance improving

- Performance broadly unchanged



Performance declining



Run Charts

(Up to date, and interactive versions of all run charts for your hospital can be viewed at www.nhfd.co.uk)

Best Practice - NCR. New Cross Hospital

Indicators supporting Best Practice Tariff (BPT) from April 2012

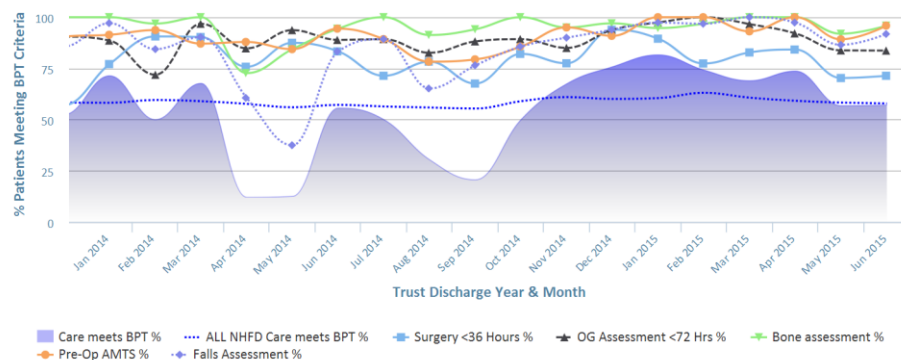


Chart data is indicative status only - © Royal College of Physicians - Technology by Crown Informatics (ID: BPT2)

Length of Stay - NCR. New Cross Hospital

NHFD Report - Averaged over 12 months from April 2011

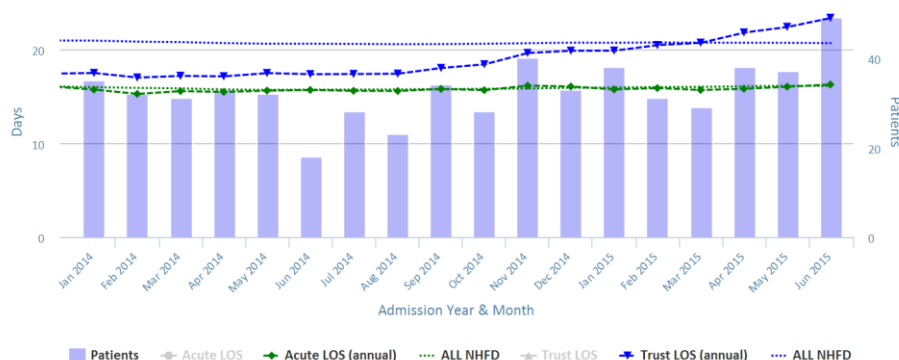


Chart data is indicative status only - www.nhfd.co.uk © Royal College of Physicians - Technology by Crown Informatics

Overall Performance - NCR. New Cross Hospital

NHFD Report - Averaged over 12 months (All Data) from April 2011 (Dual Axis)

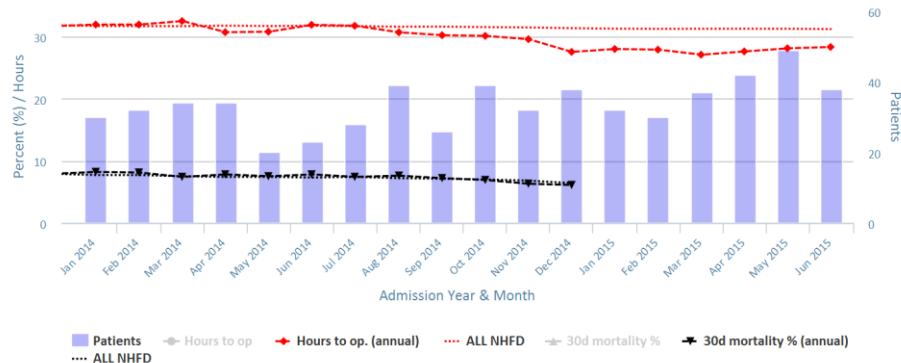


Chart data is indicative status only - www.nhfd.co.uk © Royal College of Physicians - Technology by Crown Informatics

Patient Safety - NCR. New Cross Hospital

NHFD Report - Averaged over 12 months from April 2011

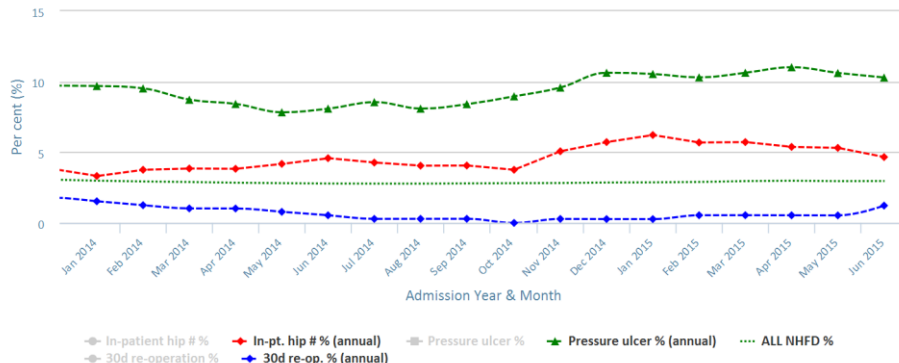


Chart data is indicative status only - www.nhfd.co.uk © Royal College of Physicians - Technology by Crown Informatics