



## NHFD Dashboard 2015

University Hospital of North Tees  
(NTG)

Figures are hospital average percentages from 2013 and 2014. Data taken from the National Hip Fracture Database.

National Hip Fracture Database lead clinician:

Nicholas Cooke

### Ward Management

	2013	2014	Rating	Progress
Admitted to orthopaedic ward within 4 hours	82.6	79.4	✓	↓
Mental test score recorded on admission	96.9	99.3	○	-
Perioperative medical assessment	88.9	89.3	○	-
Mobilised out of bed on the day after surgery (QS16-9)	No data	97.0	✓	
Received falls assessment (QS16-11)	100.0	100.0		-
Received bone health assessment (QS16-12)	98.9	99.5		-
Best practice tariff achievement	68.6	74.7	✓	↑

### Surgery

	2013	2014	Rating	Progress
Surgery on day of, or day after, admission	76.3	79.5	○	↑
Proportion of general anaesthetic with nerve blocks	52.1	46.4	○	↓
Proportion of spinal anaesthetic with nerve blocks	42.9	21.9	○	↓
Proportion of arthroplasties which are cemented	33.1	73.6	✗	↑
Eligible displaced intracapsular fractures treated with THR	22.9	13.6	✗	↓
Intertrochanteric fractures treated with SHS	62.7	88.3	○	↑
Subtrochanteric fractures treated with an IM nail	36.8	88.4	○	↑

### Outcomes

	2013	2014	Rating	Progress
Case ascertainment	No data	101.5		
Overall hospital length of stay (days)	21.3	21.5	○	-
Return to original residence within 30 days	78.7	60.6	✓	↓
Developed a pressure ulcer after presenting with hip fracture	11.1	6.5		↑
Pressure ulcer status not recorded	16.2	10.1	✗	↑
Hip fractures which were sustained as an inpatient	No data	1.5		

### Key

✓ Top Quartile      ○ 2nd/3rd Quartile      ✗ Lowest Quartile  
 ↑ Performance improving    - Performance broadly unchanged    ↓ Performance declining



### Run Charts

(Up to date, and interactive versions of all run charts for your hospital can be viewed at [www.nhfd.co.uk](http://www.nhfd.co.uk))

Best Practice - NTG. University Hospital of North Tees

Indicators supporting Best Practice Tariff (BPT) from April 2012

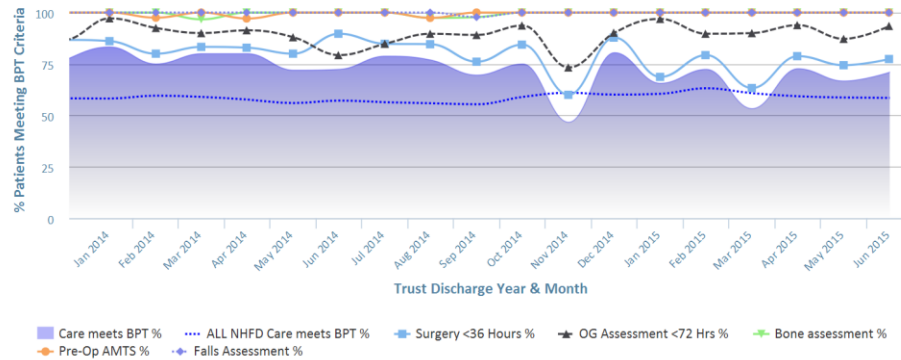


Chart data is indicative status only - © Royal College of Physicians - Technology by Crown Informatics (ID: BPT2)

Length of Stay - NTG. University Hospital of North Tees

NHFD Report - Averaged over 12 months from April 2011

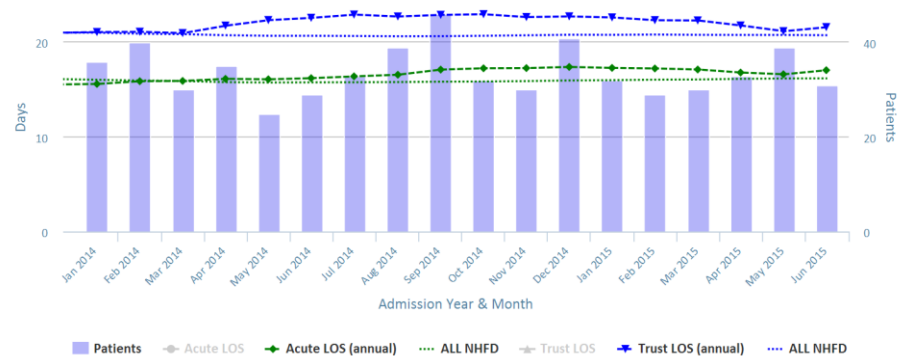


Chart data is indicative status only - www.nhfd.co.uk © Royal College of Physicians - Technology by Crown Informatics

Overall Performance - NTG. University Hospital of North Tees

NHFD Report - Averaged over 12 months (All Data) from April 2011 (Dual Axis)

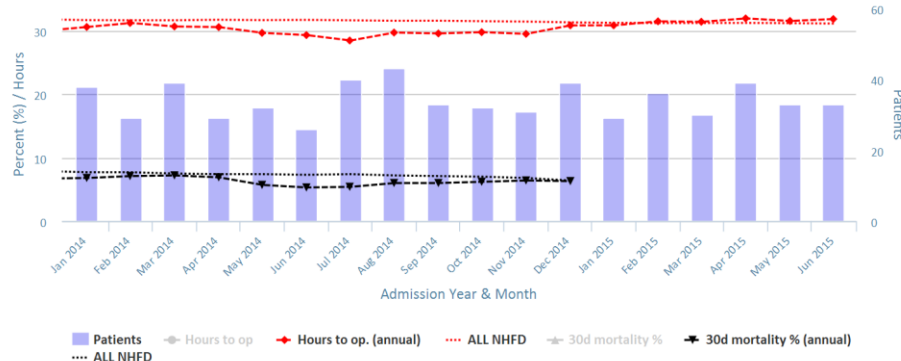


Chart data is indicative status only - www.nhfd.co.uk © Royal College of Physicians - Technology by Crown Informatics

Patient Safety - NTG. University Hospital of North Tees

NHFD Report - Averaged over 12 months from April 2011

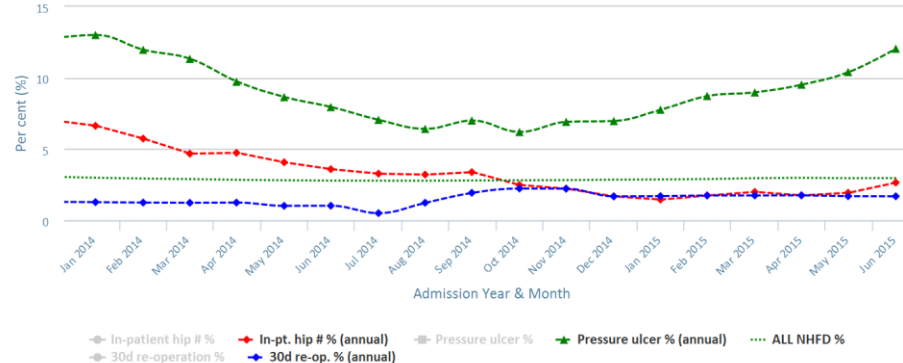


Chart data is indicative status only - www.nhfd.co.uk © Royal College of Physicians - Technology by Crown Informatics