



## NHFD Dashboard 2015

Pinderfields General Hospital (PIN)

Figures are hospital average percentages from 2013 and 2014. Data taken from the National Hip Fracture Database.

National Hip Fracture Database lead clinician:

Vidhya Nair

### Ward Management

	2013	2014	Rating	Progress
Admitted to orthopaedic ward within 4 hours	26.0	21.9	✗	↓
Mental test score recorded on admission	99.6	98.9	○	-
Perioperative medical assessment	97.3	92.5	○	↓
Mobilised out of bed on the day after surgery (QS16-9)	No data	42.6	✗	-
Received falls assessment (QS16-11)	100.0	100.0		-
Received bone health assessment (QS16-12)	100.0	100.0		-
Best practice tariff achievement	66.0	59.4	○	↓

### Surgery

	2013	2014	Rating	Progress
Surgery on day of, or day after, admission	69.0	61.2	✗	↓
Proportion of general anaesthetic with nerve blocks	87.6	82.8	✓	↓
Proportion of spinal anaesthetic with nerve blocks	59.9	64.1	✓	↑
Proportion of arthroplasties which are cemented	59.6	66.5	✗	↑
Eligible displaced intracapsular fractures treated with THR	33.3	31.6	○	-
Intertrochanteric fractures treated with SHS	48.4	47.2	✗	-
Subtrochanteric fractures treated with an IM nail	86.5	94.5	✓	↑

### Outcomes

	2013	2014	Rating	Progress
Case ascertainment	No data	93.5		
Overall hospital length of stay (days)	20.1	21.6	○	↑
Return to original residence within 30 days	54.4	47.9	○	↓
Developed a pressure ulcer after presenting with hip fracture	5.3	9.6		↓
Pressure ulcer status not recorded	0.0	0.0	✓	-
Hip fractures which were sustained as an inpatient	No data	5.4		

### Key

✓ Top Quartile

○ 2nd/3rd Quartile

✗ Lowest Quartile



Performance improving

-

Performance broadly unchanged



Performance declining



### Run Charts

(Up to date, and interactive versions of all run charts for your hospital can be viewed at [www.nhfd.co.uk](http://www.nhfd.co.uk))

Best Practice - PIN. Pinderfields General Hospital

Indicators supporting Best Practice Tariff (BPT) from April 2012

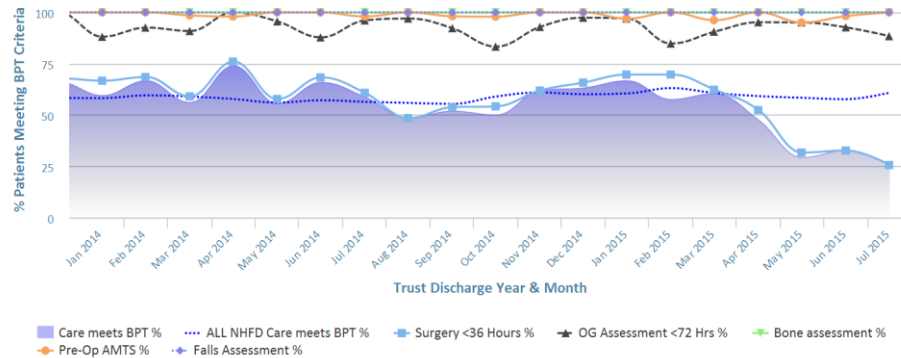


Chart data is indicative status only - © Royal College of Physicians - Technology by Crown Informatics (ID: BPT2)

Length of Stay - PIN. Pinderfields General Hospital

NHFD Report - Averaged over 12 months from April 2011

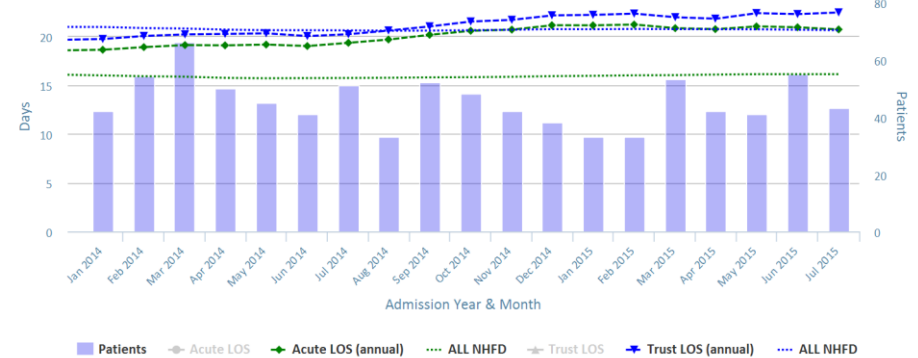


Chart data is indicative status only - www.nhfd.co.uk © Royal College of Physicians - Technology by Crown Informatics

Overall Performance - PIN. Pinderfields General Hospital

NHFD Report - Averaged over 12 months (All Data) from April 2011 (Dual Axis)

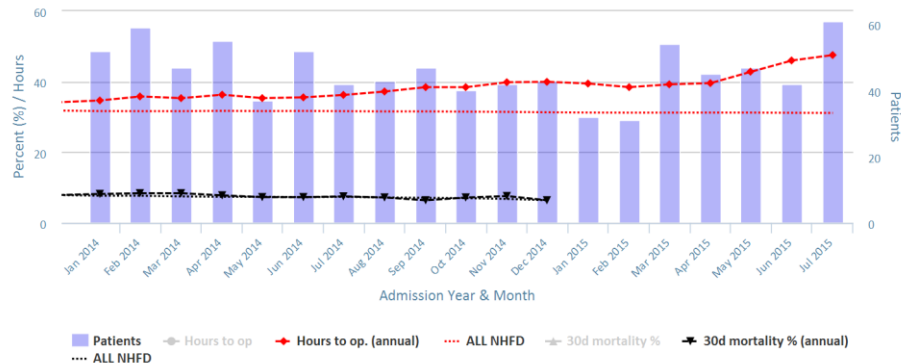


Chart data is indicative status only - www.nhfd.co.uk © Royal College of Physicians - Technology by Crown Informatics

Patient Safety - PIN. Pinderfields General Hospital

NHFD Report - Averaged over 12 months from April 2011

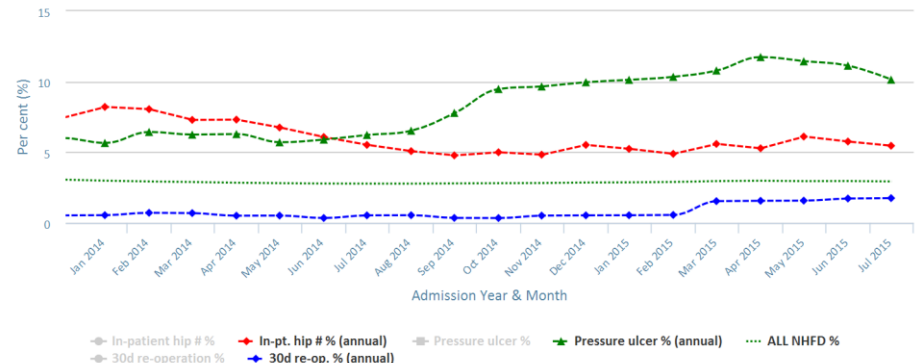


Chart data is indicative status only - www.nhfd.co.uk © Royal College of Physicians - Technology by Crown Informatics