



## NHFD Dashboard 2015

Queen Elizabeth Hospital, Edgbaston  
(QEB)

Figures are hospital average percentages from 2013 and 2014. Data taken from the National Hip Fracture Database.

National Hip Fracture Database lead clinician:

Mujeeb Ashraf

### Ward Management

	2013	2014	Rating	Progress
Admitted to orthopaedic ward within 4 hours	56.2	56.4	○	-
Mental test score recorded on admission	95.1	93.8	✗	-
Perioperative medical assessment	92.0	94.9	○	↑
Mobilised out of bed on the day after surgery (QS16-9)	No data	53.3	✗	-
Received falls assessment (QS16-11)	99.7	100.0		-
Received bone health assessment (QS16-12)	99.7	100.0		-
Best practice tariff achievement	52.5	58.4	○	↑

### Surgery

	2013	2014	Rating	Progress
Surgery on day of, or day after, admission	64.8	65.6	✗	-
Proportion of general anaesthetic with nerve blocks	13.3	48.8	○	↑
Proportion of spinal anaesthetic with nerve blocks	17.2	18.5	○	-
Proportion of arthroplasties which are cemented	95.2	98.9	✓	↑
Eligible displaced intracapsular fractures treated with THR	58.3	39.6	✓	↓
Intertrochanteric fractures treated with SHS	70.8	60.2	✗	↓
Subtrochanteric fractures treated with an IM nail	75.0	69.6	○	↓

### Outcomes

	2013	2014	Rating	Progress
Case ascertainment	No data	86.9		
Overall hospital length of stay (days)	26.4	26.6	✗	-
Return to original residence within 30 days	0.0	40.0	✗	↑
Developed a pressure ulcer after presenting with hip fracture	14.2	1.5		↑
Pressure ulcer status not recorded	0.0	0.0	✓	-
Hip fractures which were sustained as an inpatient	No data	7.6		

### Key

✓ Top Quartile

○ 2nd/3rd Quartile

✗ Lowest Quartile

↑ Performance improving - Performance broadly unchanged ↓ Performance declining



### Run Charts

(Up to date, and interactive versions of all run charts for your hospital can be viewed at [www.nhfd.co.uk](http://www.nhfd.co.uk))

Best Practice - QEB. Queen Elizabeth Hospital, Edgbaston

Indicators supporting Best Practice Tariff (BPT) from April 2012

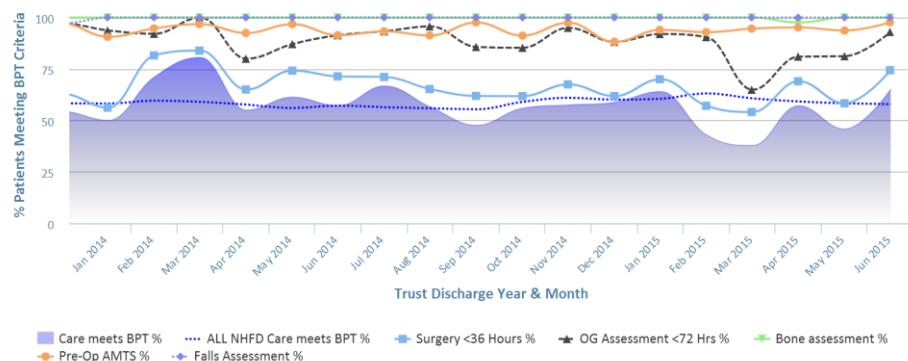


Chart data is indicative status only - © Royal College of Physicians - Technology by Crown Informatics (ID: BPT2)

Length of Stay - QEB. Queen Elizabeth Hospital, Edgbaston

NHFD Report - Averaged over 12 months from April 2011

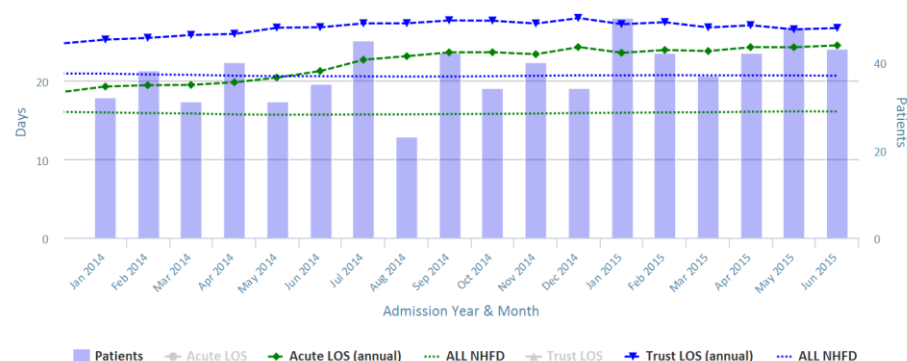


Chart data is indicative status only - www.nhfd.co.uk © Royal College of Physicians - Technology by Crown Informatics

Overall Performance - QEB. Queen Elizabeth Hospital, Edgbaston

NHFD Report - Averaged over 12 months (All Data) from April 2011 (Dual Axis)

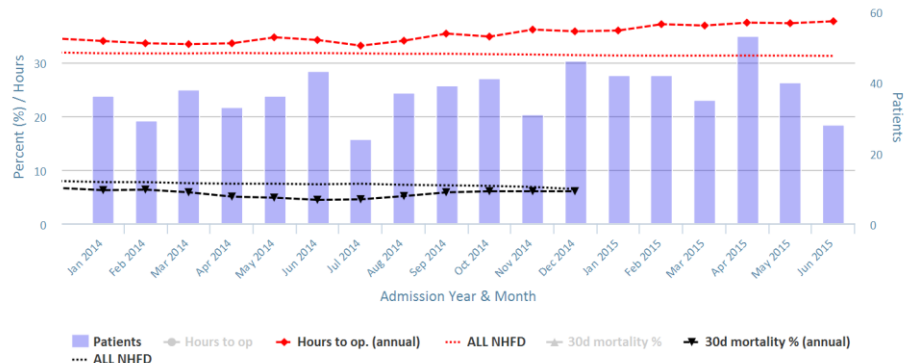


Chart data is indicative status only - www.nhfd.co.uk © Royal College of Physicians - Technology by Crown Informatics

Patient Safety - QEB. Queen Elizabeth Hospital, Edgbaston

NHFD Report - Averaged over 12 months from April 2011

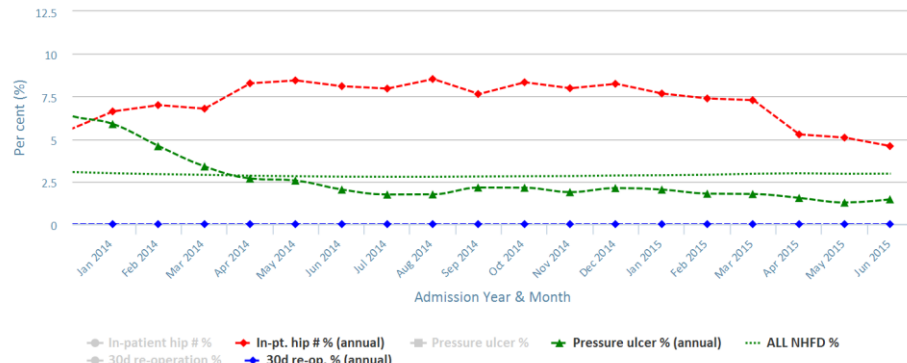


Chart data is indicative status only - www.nhfd.co.uk © Royal College of Physicians - Technology by Crown Informatics