



NHFD Dashboard 2015

Royal Glamorgan (RGH)

Figures are hospital average percentages from 2013 and 2014. Data taken from the National Hip Fracture Database.

National Hip Fracture Database lead clinician:

Raja Biswas

Ward Management

	2013	2014	Rating	Progress
Admitted to orthopaedic ward within 4 hours	25.4	74.8	✓	↑
Mental test score recorded on admission	32.9	51.3	✗	↑
Perioperative medical assessment	12.6	14.3	✗	-
Mobilised out of bed on the day after surgery (QS16-9)	No data	74.7	○	
Received falls assessment (QS16-11)	63.2	51.8		↓
Received bone health assessment (QS16-12)	76.2	73.3		↓

Surgery

	2013	2014	Rating	Progress
Surgery on day of, or day after, admission	66.7	55.4	✗	↓
Proportion of general anaesthetic with nerve blocks	80.4	67.4	○	↓
Proportion of spinal anaesthetic with nerve blocks	14.3	30.3	○	↑
Proportion of arthroplasties which are cemented	84.0	64.6	✗	↓
Eligible displaced intracapsular fractures treated with THR	17.5	30.4	○	↑
Intertrochanteric fractures treated with SHS	90.2	82.8	○	↓
Subtrochanteric fractures treated with an IM nail	87.5	88.2	○	-

Outcomes

	2013	2014	Rating	Progress
Case ascertainment	No data	125.1		
Overall hospital length of stay (days)	33.5	35.2	✗	-
Return to original residence within 30 days	12.5	47.6	○	↑
Developed a pressure ulcer after presenting with hip fracture	0.5	7.9		↓
Pressure ulcer status not recorded	0.0	0.4	✓	-
Hip fractures which were sustained as an inpatient	No data	8.5		

Key

✓ Top Quartile

○ 2nd/3rd Quartile

✗ Lowest Quartile



Performance improving

- Performance broadly unchanged



Performance declining



Run Charts

(Up to date and interactive versions of all run charts for your hospital can be viewed at www.nhfd.co.uk)

Best Practice - RGH. Royal Glamorgan

Indicators supporting Best Practice Tariff (BPT) from April 2012

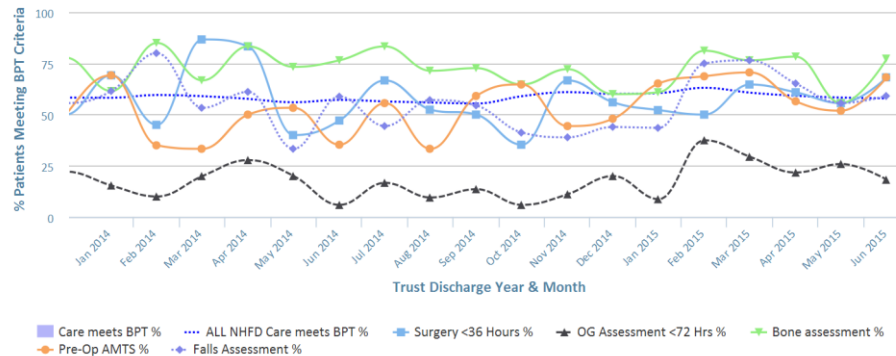


Chart data is indicative status only - © Royal College of Physicians - Technology by Crown Informatics (ID: BPT2)

Length of Stay - RGH. Royal Glamorgan

NHFD Report - Averaged over 12 months from April 2011

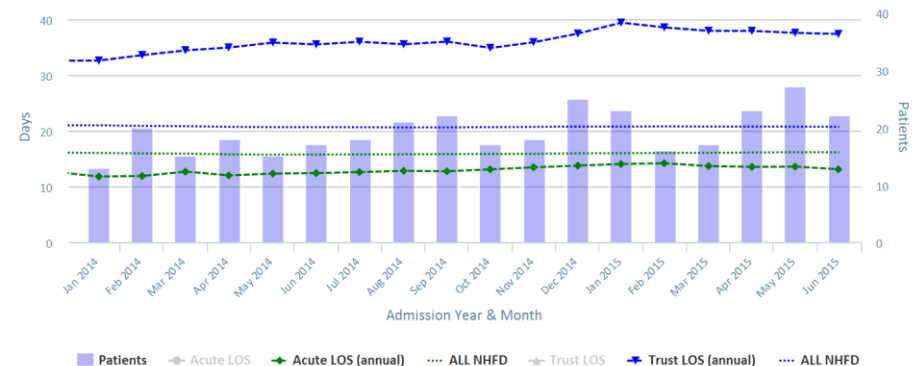


Chart data is indicative status only - www.nhfd.co.uk © Royal College of Physicians - Technology by Crown Informatics

Overall Performance - RGH. Royal Glamorgan

NHFD Report - Averaged over 12 months (All Data) from April 2011 (Dual Axis)

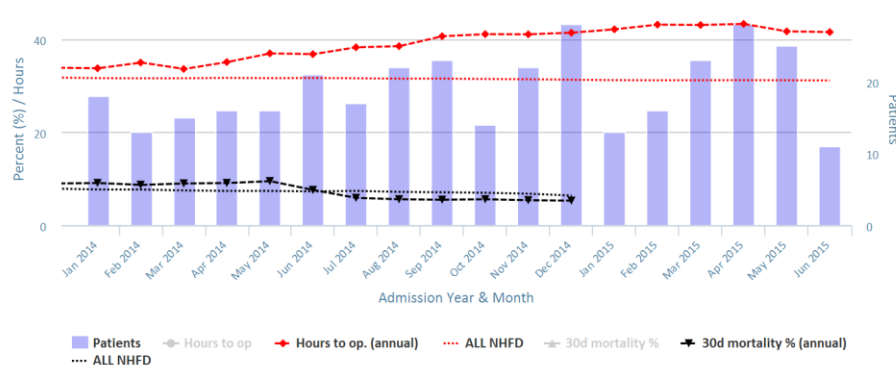


Chart data is indicative status only - www.nhfd.co.uk © Royal College of Physicians - Technology by Crown Informatics

Patient Safety - RGH. Royal Glamorgan

NHFD Report - Averaged over 12 months from April 2011

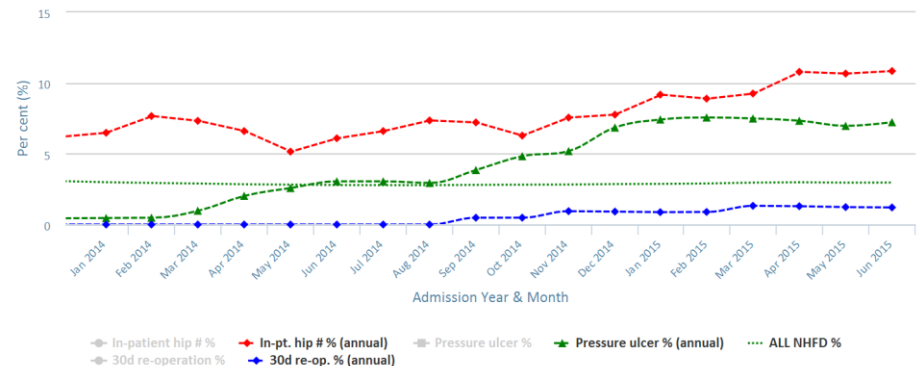


Chart data is indicative status only - www.nhfd.co.uk © Royal College of Physicians - Technology by Crown Informatics