



NHFD Dashboard 2015

Sandwell District Hospital (SAN)

Figures are hospital average percentages from 2013 and 2014. Data taken from the National Hip Fracture Database.

National Hip Fracture Database lead clinician:

Atul Malik

Ward Management

	2013	2014	Rating	Progress
Admitted to orthopaedic ward within 4 hours	56.6	63.7	✓	↑
Mental test score recorded on admission	89.6	98.6	○	↑
Perioperative medical assessment	86.2	95.4	✓	↑
Mobilised out of bed on the day after surgery (QS16-9)	No data	78.9	○	-
Received falls assessment (QS16-11)	99.7	99.7		-
Received bone health assessment (QS16-12)	99.4	99.4		-
Best practice tariff achievement	57.5	67.7	○	↑

Surgery

	2013	2014	Rating	Progress
Surgery on day of, or day after, admission	75.6	69.8	○	↓
Proportion of general anaesthetic with nerve blocks	37.7	61.5	○	↑
Proportion of spinal anaesthetic with nerve blocks	32.5	47.0	✓	↑
Proportion of arthroplasties which are cemented	75.0	76.3	○	-
Eligible displaced intracapsular fractures treated with THR	45.5	34.9	○	↓
Intertrochanteric fractures treated with SHS	76.3	72.3	○	↓
Subtrochanteric fractures treated with an IM nail	50.0	64.3	✗	↑

Outcomes

	2013	2014	Rating	Progress
Case ascertainment	No data	95.9		
Overall hospital length of stay (days)	22.8	16.2	○	↑
Return to original residence within 30 days	62.1	86.6	✓	↑
Developed a pressure ulcer after presenting with hip fracture	3.1	1.2		↑
Pressure ulcer status not recorded	4.3	2.6	✗	-
Hip fractures which were sustained as an inpatient	No data	2.0		

Key

✓ Top Quartile

○ 2nd/3rd Quartile

✗ Lowest Quartile



Performance improving

- Performance broadly unchanged



Performance declining



Run Charts

(Up to date, and interactive versions of all run charts for your hospital can be viewed at www.nhfd.co.uk)

Best Practice - SAN. Sandwell District Hospital

Indicators supporting Best Practice Tariff (BPT) from April 2012

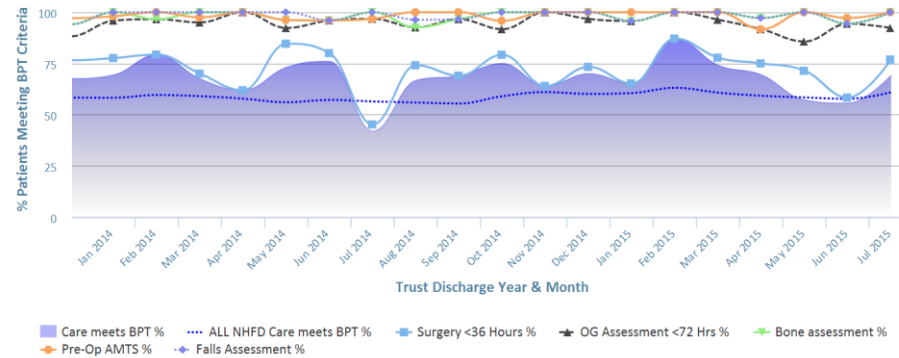


Chart data is indicative status only - © Royal College of Physicians - Technology by Crown Informatics (ID: BPT2)

Overall Performance - SAN. Sandwell District Hospital

NHFD Report - Averaged over 12 months (All Data) from April 2011 (Dual Axis)

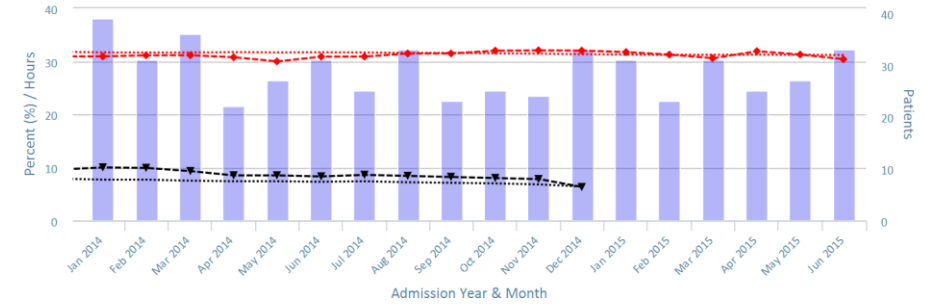


Chart data is indicative status only - www.nhfd.co.uk © Royal College of Physicians - Technology by Crown Informatics

Patient Safety - SAN. Sandwell District Hospital

NHFD Report - Averaged over 12 months from April 2011

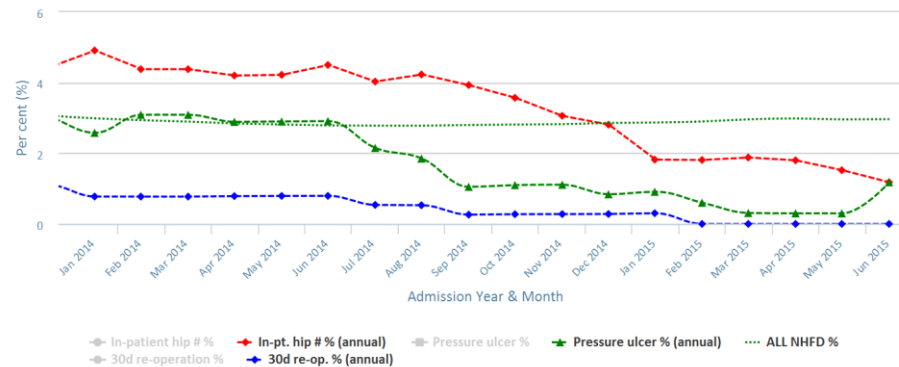


Chart data is indicative status only - www.nhfd.co.uk © Royal College of Physicians - Technology by Crown Informatics

Length of Stay - SAN. Sandwell District Hospital

NHFD Report - Averaged over 12 months from April 2011

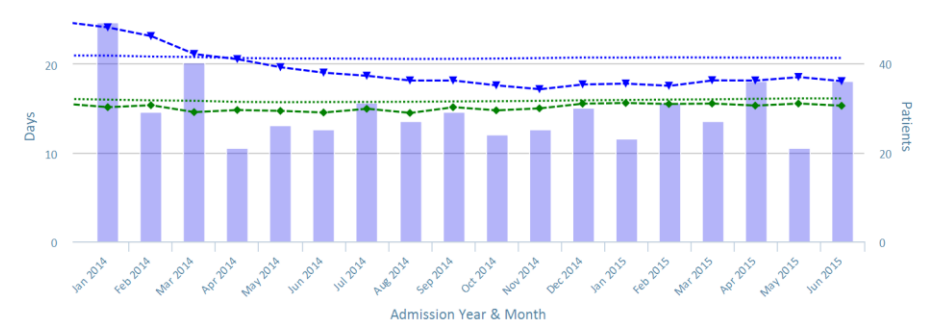


Chart data is indicative status only - www.nhfd.co.uk © Royal College of Physicians - Technology by Crown Informatics