



NHFD Dashboard 2015

County Hospital, Stafford (SDG)

Figures are hospital average percentages from 2013 and 2014. Data taken from the National Hip Fracture Database.

National Hip Fracture Database lead clinician:

Philip Roberts

Ward Management

	2013	2014	Rating	Progress
Admitted to orthopaedic ward within 4 hours	43.3	32.9	○	↓
Mental test score recorded on admission	97.7	98.8	○	-
Perioperative medical assessment	76.4	86.4	○	↑
Mobilised out of bed on the day after surgery (QS16-9)	No data	56.3	✗	
Received falls assessment (QS16-11)	93.0	96.8		↑
Received bone health assessment (QS16-12)	99.0	99.4		-
Best practice tariff achievement	54.5	66.5	○	↑

Surgery

	2013	2014	Rating	Progress
Surgery on day of, or day after, admission	74.1	79.9	○	↑
Proportion of general anaesthetic with nerve blocks	33.0	17.7	✗	↓
Proportion of spinal anaesthetic with nerve blocks	40.6	22.7	○	↓
Proportion of arthroplasties which are cemented	93.8	94.0	○	-
Eligible displaced intracapsular fractures treated with THR	30.2	37.1	✓	↑
Intertrochanteric fractures treated with SHS	97.4	96.2	✓	-
Subtrochanteric fractures treated with an IM nail	No data given	66.7	○	

Outcomes

	2013	2014	Rating	Progress
Case ascertainment	No data	69.5		
Overall hospital length of stay (days)	21.2	20.3	○	-
Return to original residence within 30 days	65.3	65.9	✓	-
Developed a pressure ulcer after presenting with hip fracture	0.0	0.6		-
Pressure ulcer status not recorded	46.8	17.4	✗	↑
Hip fractures which were sustained as an inpatient	No data	4.1		

Key

✓ Top Quartile ○ 2nd/3rd Quartile ✗ Lowest Quartile
 ↑ Performance improving - Performance broadly unchanged ↓ Performance declining



Run Charts

(Up to date, and interactive versions of all run charts for your hospital can be viewed at www.nhfd.co.uk)

Best Practice - SDG, Staffordshire General Hospital

Indicators supporting Best Practice Tariff (BPT) from April 2012

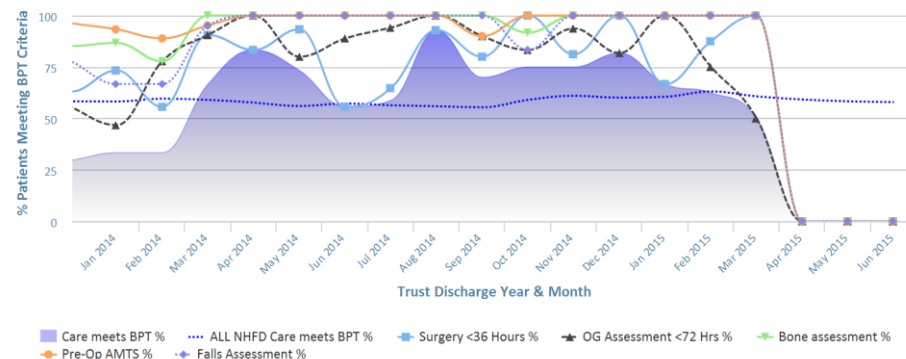


Chart data is indicative status only - © Royal College of Physicians - Technology by Crown Informatics (ID: BPT2)

Length of Stay - SDG, Staffordshire General Hospital

NHFD Report - Averaged over 12 months from April 2011

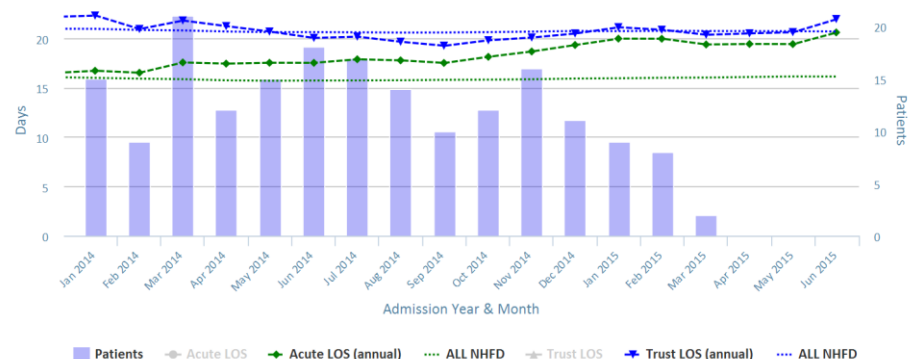


Chart data is indicative status only - www.nhfd.co.uk © Royal College of Physicians - Technology by Crown Informatics

Overall Performance - SDG, Staffordshire General Hospital

NHFD Report - Averaged over 12 months (All Data) from April 2011 (Dual Axis)

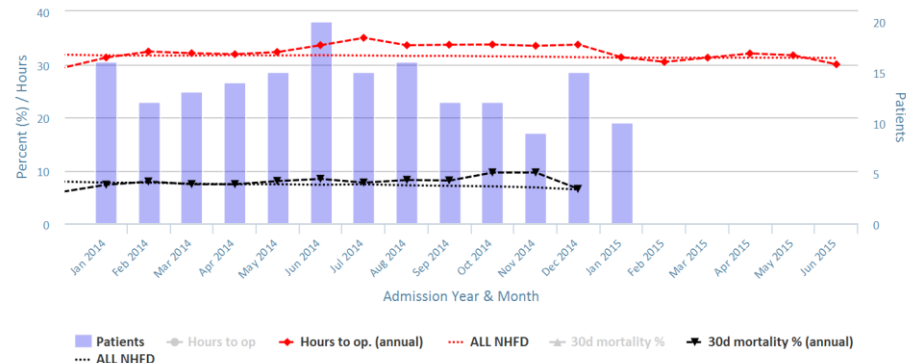


Chart data is indicative status only - www.nhfd.co.uk © Royal College of Physicians - Technology by Crown Informatics

Patient Safety - SDG, Staffordshire General Hospital

NHFD Report - Averaged over 12 months from April 2011

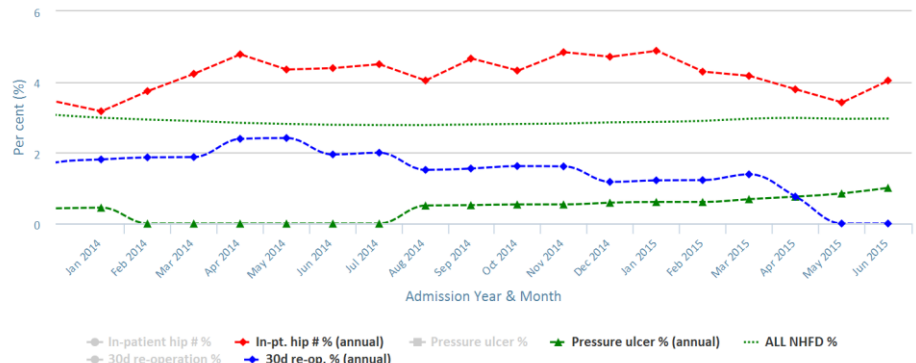


Chart data is indicative status only - www.nhfd.co.uk © Royal College of Physicians - Technology by Crown Informatics