



NHFD Dashboard 2015

Royal Stoke University (STO)

Figures are hospital average percentages from 2013 and 2014. Data taken from the National Hip Fracture Database.

National Hip Fracture Database lead clinician:

Marilyn Brown, Philip Roberts

Ward Management

	2013	2014	Rating	Progress
Admitted to orthopaedic ward within 4 hours	56.6	32.7	○	↓
Mental test score recorded on admission	92.7	97.3	○	↑
Perioperative medical assessment	93.2	92.7	○	-
Mobilised out of bed on the day after surgery (QS16-9)	No data	89.3	○	-
Received falls assessment (QS16-11)	99.5	99.6		-
Received bone health assessment (QS16-12)	99.8	100.0		-
Best practice tariff achievement	56.5	68.0	○	↑

Surgery

	2013	2014	Rating	Progress
Surgery on day of, or day after, admission	65.1	74.1	○	↑
Proportion of general anaesthetic with nerve blocks	61.6	71.3	○	↑
Proportion of spinal anaesthetic with nerve blocks	5.0	9.6	○	↑
Proportion of arthroplasties which are cemented	31.9	56.1	✗	↑
Eligible displaced intracapsular fractures treated with THR	32.6	46.3	✓	↑
Intertrochanteric fractures treated with SHS	98.2	98.2	✓	-
Subtrochanteric fractures treated with an IM nail	76.9	58.6	✗	↓

Outcomes

	2013	2014	Rating	Progress
Case ascertainment	No data	92.5		
Overall hospital length of stay (days)	9.7	9.9	✓	-
Return to original residence within 30 days	5.6	36.5	✗	↑
Developed a pressure ulcer after presenting with hip fracture	2.6	3.5		-
Pressure ulcer status not recorded	0.5	0.0	✓	-
Hip fractures which were sustained as an inpatient	No data	4.7		

Key

✓ Top Quartile

○ 2nd/3rd Quartile

✗ Lowest Quartile

↑ Performance improving - Performance broadly unchanged ↓ Performance declining



Run Charts

(Up to date, and interactive versions of all run charts for your hospital can be viewed at www.nhfd.co.uk)

Best Practice - STO. University Hospital of North Staffordshire

Indicators supporting Best Practice Tariff (BPT) from April 2012

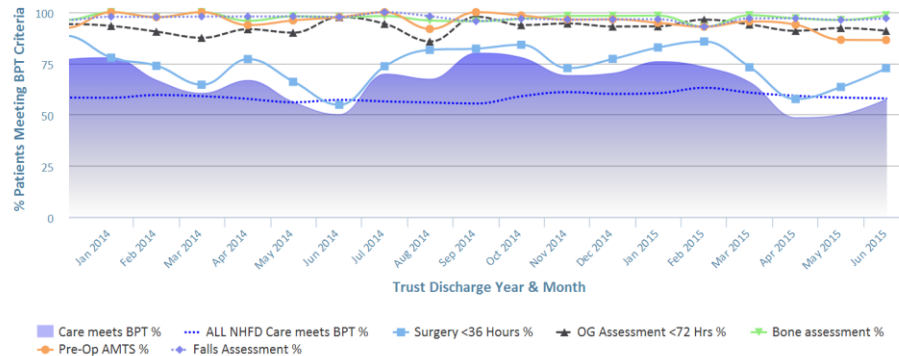


Chart data is indicative status only - © Royal College of Physicians - Technology by Crown Informatics (ID: BPT2)

Length of Stay - STO. University Hospital of North Staffordshire

NHFD Report - Averaged over 12 months from April 2011

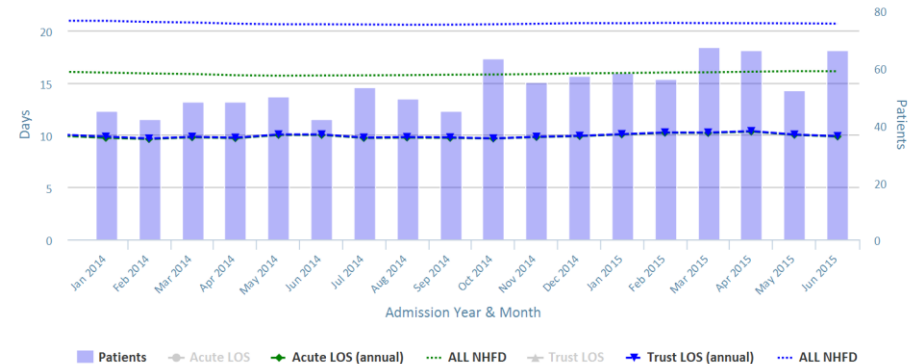


Chart data is indicative status only - www.nhfd.co.uk © Royal College of Physicians - Technology by Crown Informatics

Overall Performance - STO. University Hospital of North Staffordshire

NHFD Report - Averaged over 12 months (All Data) from April 2011 (Dual Axis)

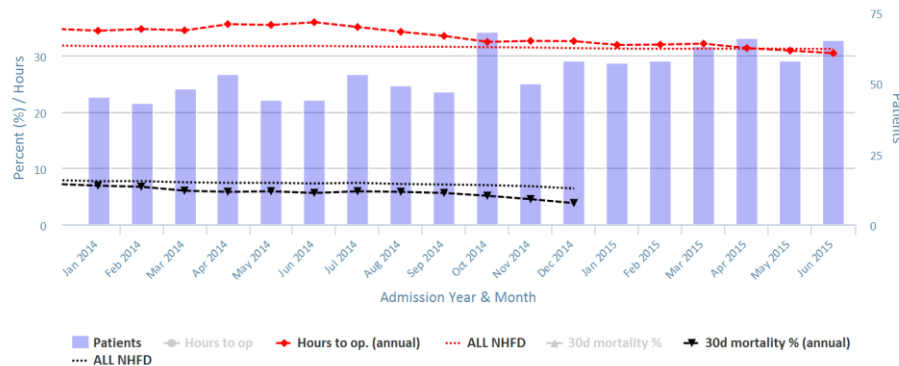


Chart data is indicative status only - www.nhfd.co.uk © Royal College of Physicians - Technology by Crown Informatics

Patient Safety - STO. University Hospital of North Staffordshire

NHFD Report - Averaged over 12 months from April 2011

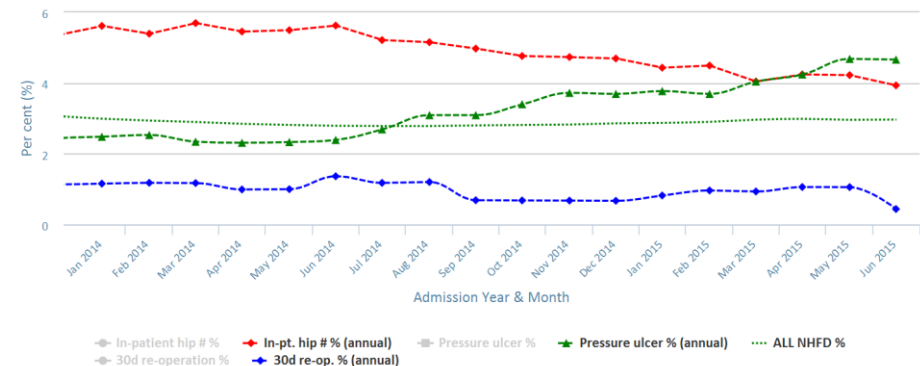


Chart data is indicative status only - www.nhfd.co.uk © Royal College of Physicians - Technology by Crown Informatics