



NHFD Dashboard 2015

Sunderland Royal Hospital (SUN)

Figures are hospital average percentages from 2013 and 2014. Data taken from the National Hip Fracture Database.

National Hip Fracture Database lead clinician:

Paul Dixon

Ward Management

	2013	2014	Rating	Progress
Admitted to orthopaedic ward within 4 hours	75.8	66.7	✓	↓
Mental test score recorded on admission	99.2	97.2	○	-
Perioperative medical assessment	88.7	85.4	○	↓
Mobilised out of bed on the day after surgery (QS16-9)	No data	79.4	○	-
Received falls assessment (QS16-11)	99.7	99.7	-	-
Received bone health assessment (QS16-12)	99.7	99.4	-	-
Best practice tariff achievement	65.3	69.5	○	↑

Surgery

	2013	2014	Rating	Progress
Surgery on day of, or day after, admission	73.0	81.3	✓	↑
Proportion of general anaesthetic with nerve blocks	38.6	52.1	○	↑
Proportion of spinal anaesthetic with nerve blocks	27.9	35.0	○	↑
Proportion of arthroplasties which are cemented	97.2	95.9	○	-
Eligible displaced intracapsular fractures treated with THR	38.5	33.3	○	↓
Intertrochanteric fractures treated with SHS	97.1	96.3	✓	-
Subtrochanteric fractures treated with an IM nail	78.6	79.2	○	-

Outcomes

	2013	2014	Rating	Progress
Case ascertainment	No data	95.4	-	-
Overall hospital length of stay (days)	23.2	21.8	○	-
Return to original residence within 30 days	48.6	59.2	○	↑
Developed a pressure ulcer after presenting with hip fracture	4.2	4.5	-	-
Pressure ulcer status not recorded	0.8	0.0	✓	-
Hip fractures which were sustained as an inpatient	No data	7.9	-	-

Key

✓ Top Quartile

○ 2nd/3rd Quartile

✗ Lowest Quartile



Performance improving

- Performance broadly unchanged



Performance declining



Run Charts

(Up to date, and interactive versions of all run charts for your hospital can be viewed at www.nhfd.co.uk)

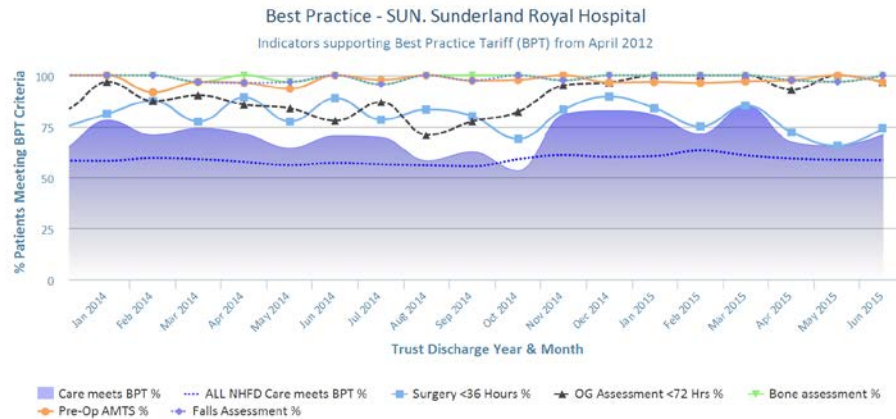


Chart data is indicative status only - © Royal College of Physicians - Technology by Crown Informatics (ID: BPT2)

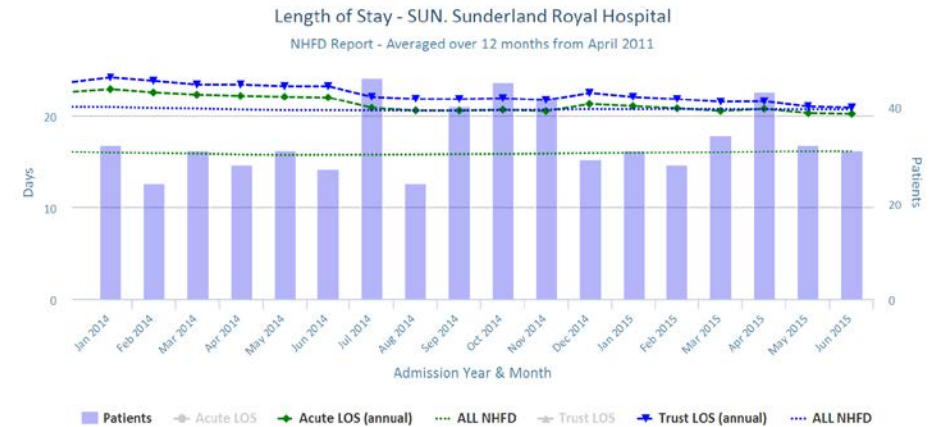


Chart data is indicative status only - www.nhfd.co.uk © Royal College of Physicians - Technology by Crown Informatics

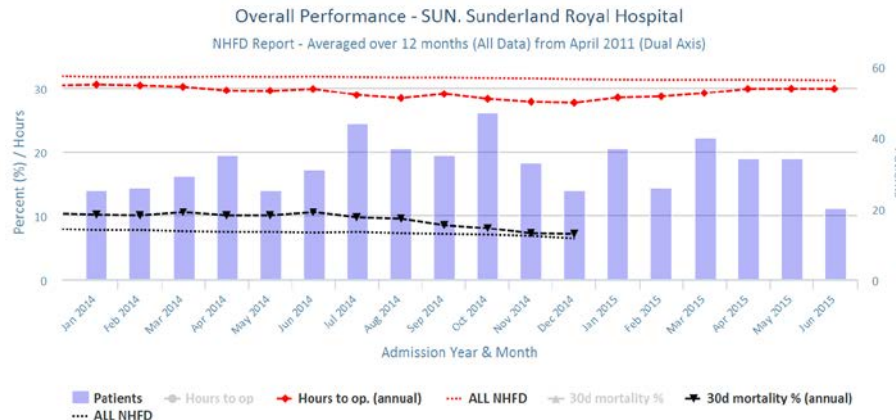


Chart data is indicative status only - www.nhfd.co.uk © Royal College of Physicians - Technology by Crown Informatics

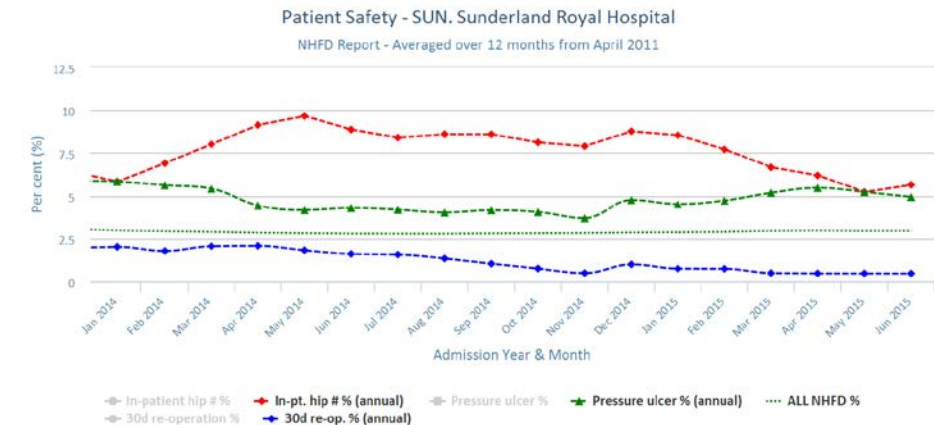


Chart data is indicative status only - www.nhfd.co.uk © Royal College of Physicians - Technology by Crown Informatics