



NHFD Dashboard 2015

Tunbridge Wells Hospital (TUN)

Figures are hospital average percentages from 2013 and 2014. Data taken from the National Hip Fracture Database.

National Hip Fracture Database lead clinician:

Lee David

Ward Management

	2013	2014	Rating	Progress
Admitted to orthopaedic ward within 4 hours	55.8	56.5	○	-
Mental test score recorded on admission	89.6	99.8	✓	↑
Perioperative medical assessment	72.9	94.6	○	↑
Mobilised out of bed on the day after surgery (QS16-9)	No data	59.2	✗	
Received falls assessment (QS16-11)	95.8	98.7		↑
Received bone health assessment (QS16-12)	95.4	99.4		↑
Best practice tariff achievement	46.6	74.2	○	↑

Surgery

	2013	2014	Rating	Progress
Surgery on day of, or day after, admission	73.2	80.5	○	↑
Proportion of general anaesthetic with nerve blocks	26.3	45.6	○	↑
Proportion of spinal anaesthetic with nerve blocks	1.0	3.2	✗	-
Proportion of arthroplasties which are cemented	96.5	95.6	○	-
Eligible displaced intracapsular fractures treated with THR	18.0	17.7	○	-
Intertrochanteric fractures treated with SHS	90.4	88.5	○	-
Subtrochanteric fractures treated with an IM nail	45.9	75.0	○	↑

Outcomes

	2013	2014	Rating	Progress
Case ascertainment	No data	82.3		
Overall hospital length of stay (days)	21.7	23.2	○	-
Return to original residence within 30 days	55.3	61.9	✓	↑
Developed a pressure ulcer after presenting with hip fracture	8.8	4.3		↑
Pressure ulcer status not recorded	0.7	0.0	✓	-
Hip fractures which were sustained as an inpatient	No data	2.8		

Key

✓ Top Quartile ○ 2nd/3rd Quartile ✗ Lowest Quartile

↑ Performance improving - Performance broadly unchanged ↓ Performance declining



Run Charts

(Up to date, and interactive versions of all run charts for your hospital can be viewed at www.nhfd.co.uk)

Best Practice - TUN. Tunbridge Wells Hospital

Indicators supporting Best Practice Tariff (BPT) from April 2012

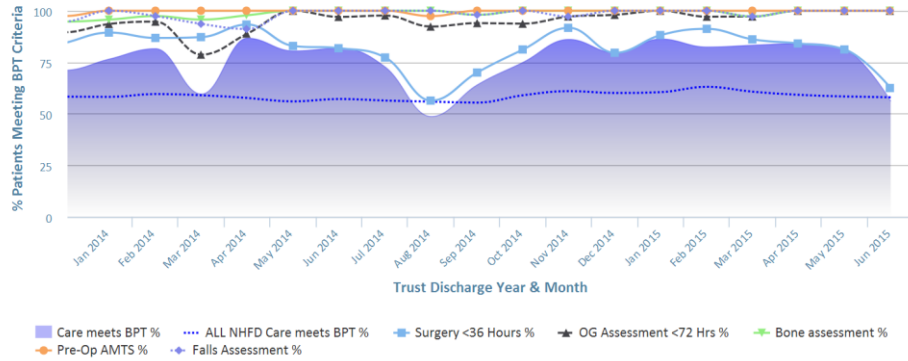


Chart data is indicative status only - © Royal College of Physicians - Technology by Crown Informatics (ID: BPT2)

Length of Stay - TUN. Tunbridge Wells Hospital

NHFD Report - Averaged over 12 months from April 2011

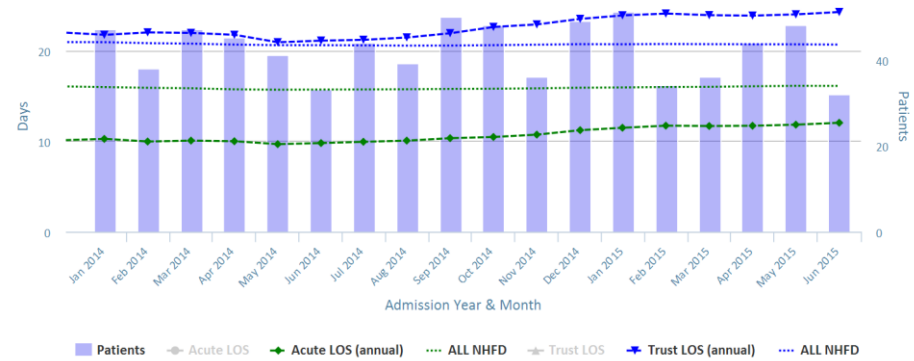


Chart data is indicative status only - www.nhfd.co.uk © Royal College of Physicians - Technology by Crown Informatics

Overall Performance - TUN. Tunbridge Wells Hospital

NHFD Report - Averaged over 12 months (All Data) from April 2011 (Dual Axis)

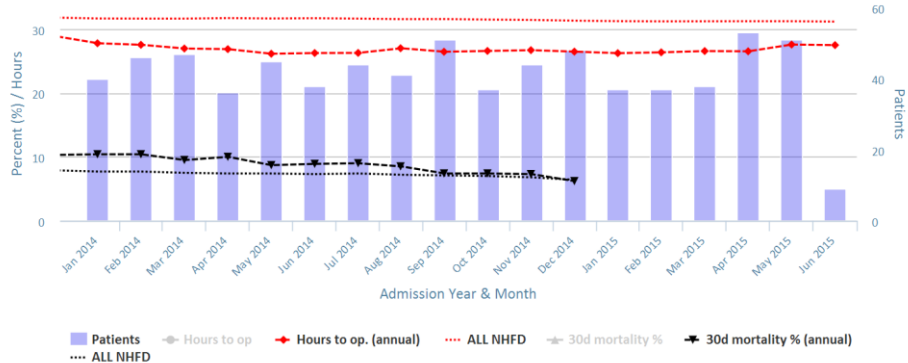


Chart data is indicative status only - www.nhfd.co.uk © Royal College of Physicians - Technology by Crown Informatics

Patient Safety - TUN. Tunbridge Wells Hospital

NHFD Report - Averaged over 12 months from April 2011

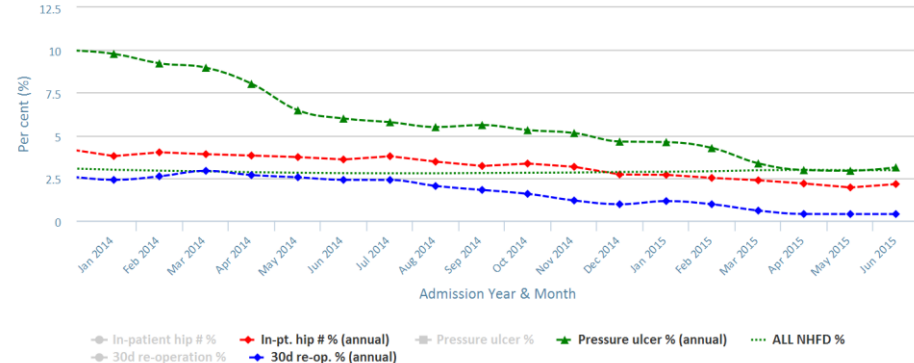


Chart data is indicative status only - www.nhfd.co.uk © Royal College of Physicians - Technology by Crown Informatics