



## NHFD Dashboard 2015

University Hospital Queens  
Medical Centre (UHN)

Figures are hospital average percentages from 2013 and 2014. Data taken from the National Hip Fracture Database.

National Hip Fracture Database lead clinician:

Chris Moran

### Ward Management

	2013	2014	Rating	Progress
Admitted to orthopaedic ward within 4 hours	79.5	61.5	✓	↓
Mental test score recorded on admission	97.9	98.1	○	-
Perioperative medical assessment	93.7	92.3	○	-
Mobilised out of bed on the day after surgery (QS16-9)	No data	65.7	○	
Received falls assessment (QS16-11)	96.7	98.4		-
Received bone health assessment (QS16-12)	97.2	98.2		-
Best practice tariff achievement	72.0	68.0	○	↓

### Surgery

	2013	2014	Rating	Progress
Surgery on day of, or day after, admission	80.8	75.3	○	↓
Proportion of general anaesthetic with nerve blocks	86.2	87.7	✓	-
Proportion of spinal anaesthetic with nerve blocks	71.0	79.4	✓	↑
Proportion of arthroplasties which are cemented	89.5	85.5	○	↓
Eligible displaced intracapsular fractures treated with THR	11.4	14.8	✗	↑
Intertrochanteric fractures treated with SHS	85.4	84.2	○	-
Subtrochanteric fractures treated with an IM nail	94.4	86.8	○	↓

### Outcomes

	2013	2014	Rating	Progress
Case ascertainment	No data	113.5		
Overall hospital length of stay (days)	18.4	18.1	○	-
Return to original residence within 30 days	0.0	49.8	○	↑
Developed a pressure ulcer after presenting with hip fracture	2.2	1.5		-
Pressure ulcer status not recorded	0.2	0.1	✓	-
Hip fractures which were sustained as an inpatient	No data	0.3		

### Key

✓ Top Quartile

○ 2nd/3rd Quartile

✗ Lowest Quartile



Performance improving

- Performance broadly unchanged



Performance declining



### Run Charts

(Up to date, and interactive versions of all run charts for your hospital can be viewed at [www.nhfd.co.uk](http://www.nhfd.co.uk))

Best Practice - UHN. University Hospital Queens Medical Centre

Indicators supporting Best Practice Tariff (BPT) from April 2012

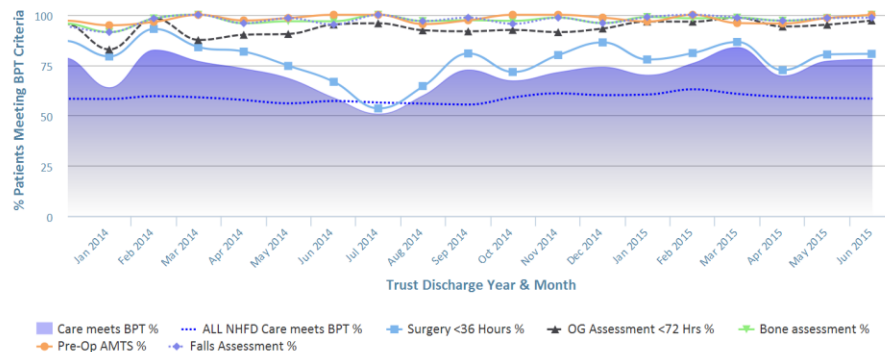


Chart data is indicative status only - © Royal College of Physicians - Technology by Crown Informatics (ID: BPT2)

Length of Stay - UHN. University Hospital Queens Medical Centre

NHFD Report - Averaged over 12 months from April 2011

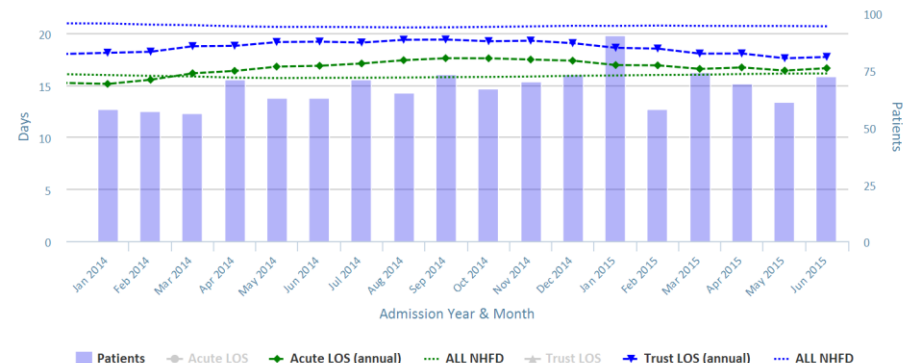


Chart data is indicative status only - [www.nhfd.co.uk](http://www.nhfd.co.uk) © Royal College of Physicians - Technology by Crown Informatics

Overall Performance - UHN. University Hospital Queens Medical Centre

NHFD Report - Averaged over 12 months (All Data) from April 2011 (Dual Axis)

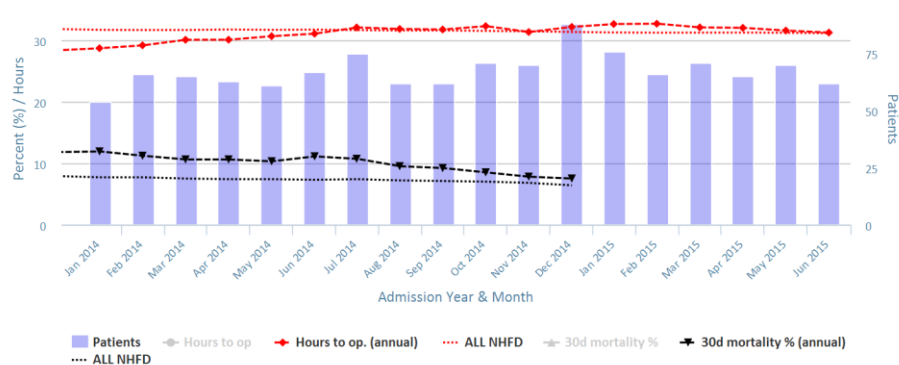


Chart data is indicative status only - [www.nhfd.co.uk](http://www.nhfd.co.uk) © Royal College of Physicians - Technology by Crown Informatics

Patient Safety - UHN. University Hospital Queens Medical Centre

NHFD Report - Averaged over 12 months from April 2011

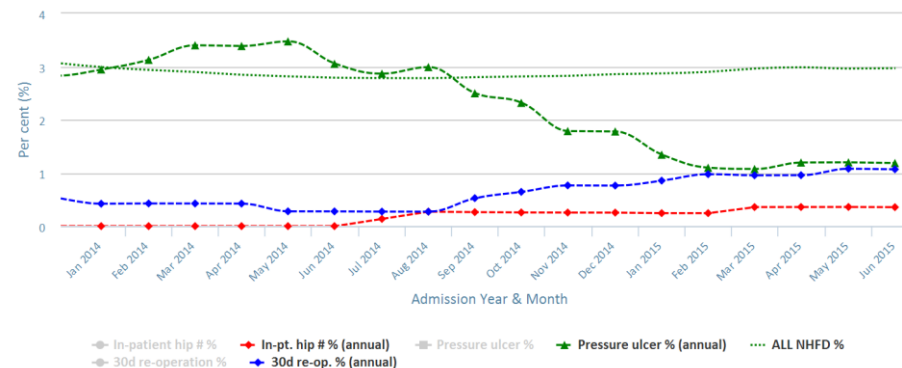


Chart data is indicative status only - [www.nhfd.co.uk](http://www.nhfd.co.uk) © Royal College of Physicians - Technology by Crown Informatics