



NHFD Dashboard 2015

University Hospital of Wales (UHW)

Figures are hospital average percentages from 2013 and 2014. Data taken from the National Hip Fracture Database.

National Hip Fracture Database lead clinician:

Antony Johansen

Ward Management

	2013	2014	Rating	Progress
Admitted to orthopaedic ward within 4 hours	9.8	9.5	✗	-
Mental test score recorded on admission	41.7	80.4	✗	↑
Perioperative medical assessment	10.3	56.3	✗	↑
Mobilised out of bed on the day after surgery (QS16-9)	No data	52.0	✗	
Received falls assessment (QS16-11)	99.3	92.4		↓
Received bone health assessment (QS16-12)	98.4	97.2		-

Surgery

	2013	2014	Rating	Progress
Surgery on day of, or day after, admission	59.3	60.0	✗	-
Proportion of general anaesthetic with nerve blocks	42.5	47.3	○	↑
Proportion of spinal anaesthetic with nerve blocks	40.7	44.7	✓	↑
Proportion of arthroplasties which are cemented	93.9	95.6	○	-
Eligible displaced intracapsular fractures treated with THR	23.4	36.8	✓	↑
Intertrochanteric fractures treated with SHS	82.4	74.8	○	↓
Subtrochanteric fractures treated with an IM nail	86.4	90.9	○	↑

Outcomes

	2013	2014	Rating	Progress
Case ascertainment	No data	97.8		
Overall hospital length of stay (days)	38.6	38.1	✗	-
Return to original residence within 30 days	48.4	49.2	○	-
Developed a pressure ulcer after presenting with hip fracture	1.4	4.6		↓
Pressure ulcer status not recorded	1.2	3.3	✗	-
Hip fractures which were sustained as an inpatient	No data	7.1		

Key

✓ Top Quartile

○ 2nd/3rd Quartile

✗ Lowest Quartile



Performance improving

- Performance broadly unchanged



Performance declining



Run Charts

(Up to date, and interactive versions of all run charts for your hospital can be viewed at www.nhfd.co.uk)

Best Practice - UHW. University Hospital of Wales

Indicators supporting Best Practice Tariff (BPT) from April 2012

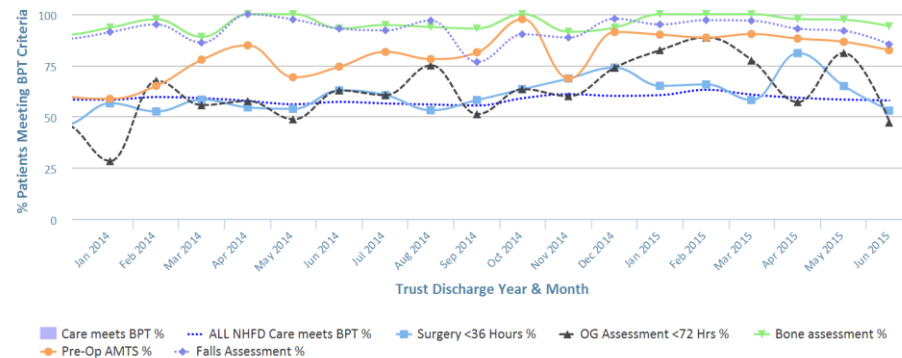


Chart data is indicative status only - © Royal College of Physicians - Technology by Crown Informatics (ID: BPT2)

Length of Stay - UHW. University Hospital of Wales

NHFD Report - Averaged over 12 months from April 2011

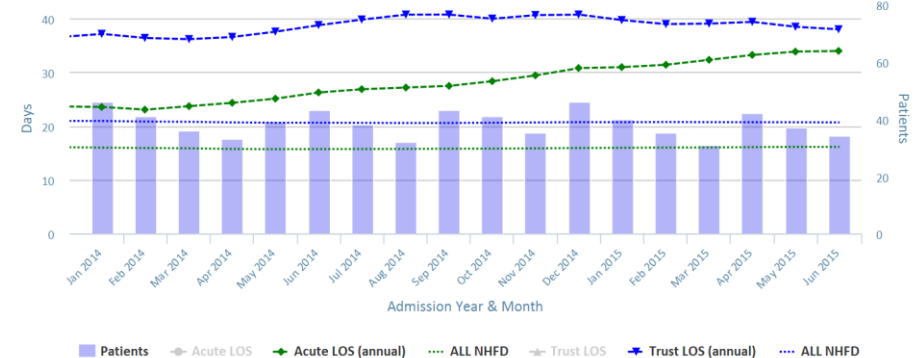


Chart data is indicative status only - www.nhfd.co.uk © Royal College of Physicians - Technology by Crown Informatics

Overall Performance - UHW. University Hospital of Wales

NHFD Report - Averaged over 12 months (All Data) from April 2011 (Dual Axis)

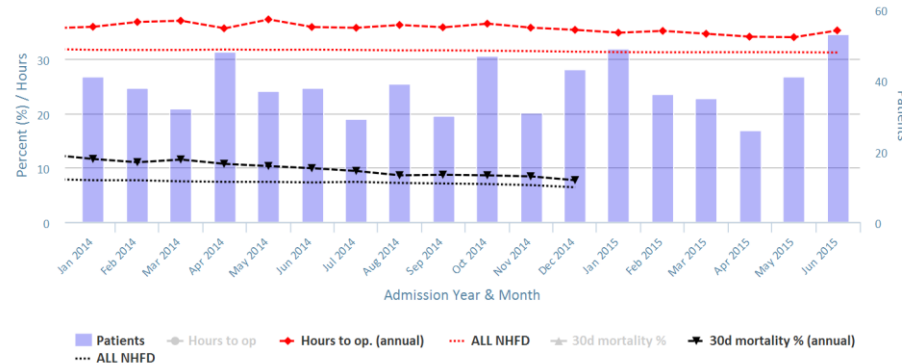


Chart data is indicative status only - www.nhfd.co.uk © Royal College of Physicians - Technology by Crown Informatics

Patient Safety - UHW. University Hospital of Wales

NHFD Report - Averaged over 12 months from April 2011

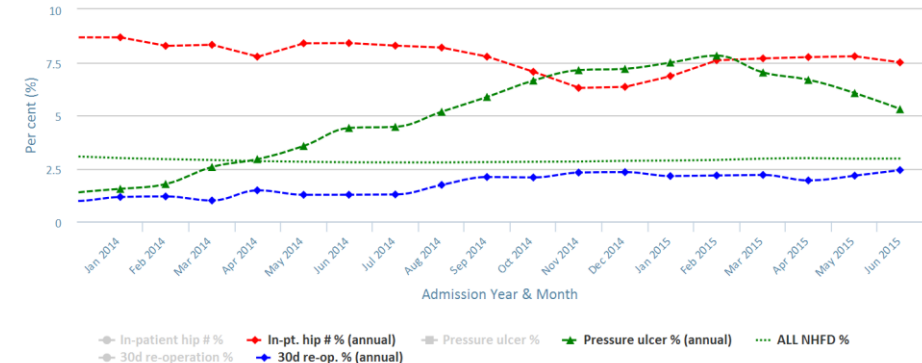


Chart data is indicative status only - www.nhfd.co.uk © Royal College of Physicians - Technology by Crown Informatics