



NHFD Dashboard 2015

Worcestershire Royal Hospital
(WRC)

Figures are hospital average percentages from 2013 and 2014. Data taken from the National Hip Fracture Database.

National Hip Fracture Database lead clinician:

Charles Docker

Ward Management

	2013	2014	Rating	Progress
Admitted to orthopaedic ward within 4 hours	33.7	24.8	✗	↓
Mental test score recorded on admission	91.9	92.8	✗	-
Perioperative medical assessment	84.5	90.0	○	↑
Mobilised out of bed on the day after surgery (QS16-9)	No data	69.6	○	
Received falls assessment (QS16-11)	99.5	100.0		-
Received bone health assessment (QS16-12)	96.5	99.3		↑
Best practice tariff achievement	44.8	56.2	○	↑

Surgery

	2013	2014	Rating	Progress
Surgery on day of, or day after, admission	52.7	60.5	✗	↑
Proportion of general anaesthetic with nerve blocks	79.2	78.1	✓	-
Proportion of spinal anaesthetic with nerve blocks	10.4	18.7	○	↑
Proportion of arthroplasties which are cemented	67.8	77.3	○	↑
Eligible displaced intracapsular fractures treated with THR	11.6	15.6	✗	↑
Intertrochanteric fractures treated with SHS	96.5	93.1	✓	↓
Subtrochanteric fractures treated with an IM nail	30.0	50.0	✗	↑

Outcomes

	2013	2014	Rating	Progress
Case ascertainment	No data	97.4		
Overall hospital length of stay (days)	17.2	14.5	✓	↑
Return to original residence within 30 days	9.8	28.7	✗	↑
Developed a pressure ulcer after presenting with hip fracture	1.0	1.6		-
Pressure ulcer status not recorded	2.2	0.9	✗	-
Hip fractures which were sustained as an inpatient	No data	2.0		

Key

✓ Top Quartile

○ 2nd/3rd Quartile

✗ Lowest Quartile

↑ Performance improving - Performance broadly unchanged ↓ Performance declining



Run Charts

(Up to date, and interactive versions of all run charts for your hospital can be viewed at www.nhfd.co.uk)

Best Practice - WRC. Worcestershire Royal Hospital
Indicators supporting Best Practice Tariff (BPT) from April 2012

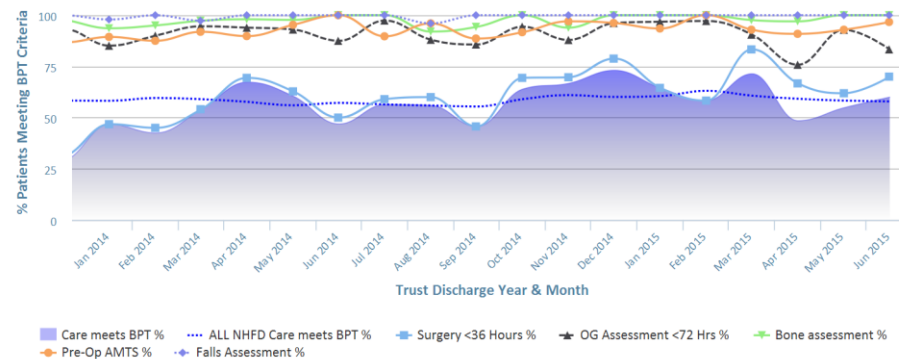


Chart data is indicative status only - © Royal College of Physicians - Technology by Crown Informatics (ID: BPT2)

Length of Stay - WRC. Worcestershire Royal Hospital
NHFD Report - Averaged over 12 months from April 2011

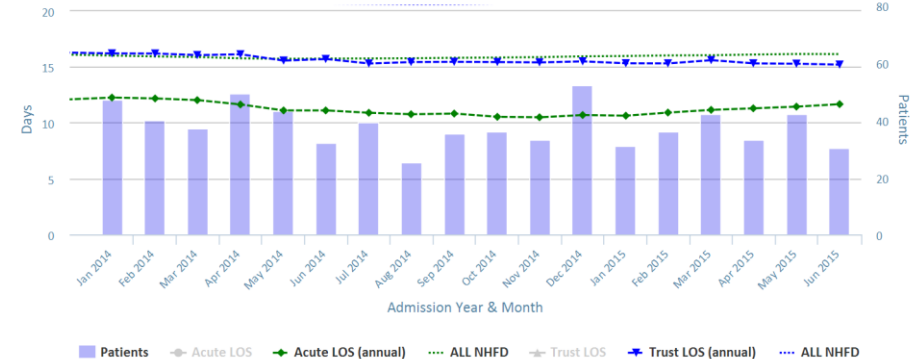


Chart data is indicative status only - www.nhfd.co.uk © Royal College of Physicians - Technology by Crown Informatics

Overall Performance - WRC. Worcestershire Royal Hospital
NHFD Report - Averaged over 12 months (All Data) from April 2011 (Dual Axis)

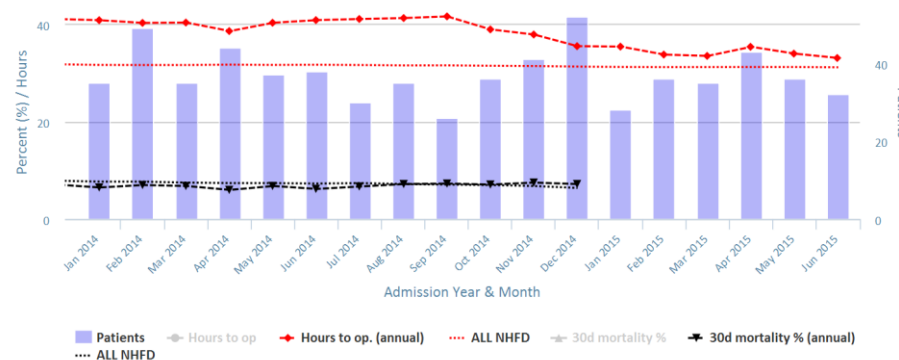


Chart data is indicative status only - www.nhfd.co.uk © Royal College of Physicians - Technology by Crown Informatics

Patient Safety - WRC. Worcestershire Royal Hospital
NHFD Report - Averaged over 12 months from April 2011

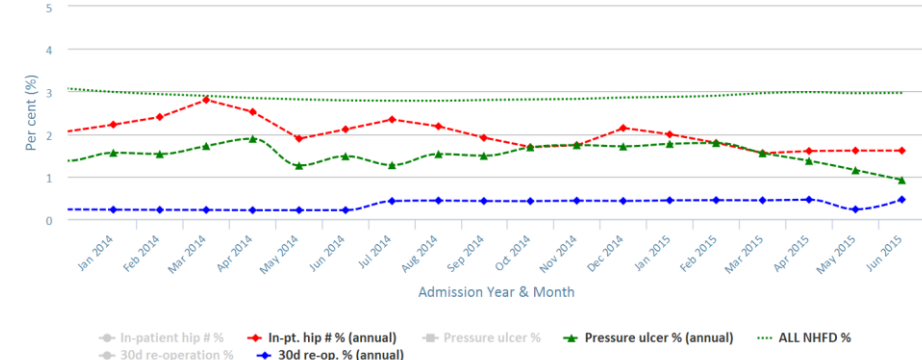


Chart data is indicative status only - www.nhfd.co.uk © Royal College of Physicians - Technology by Crown Informatics