



NHFD Dashboard 2015

Withybush General Hospital (WYB)

Figures are hospital average percentages from 2013 and 2014. Data taken from the National Hip Fracture Database.

National Hip Fracture Database lead clinician:

Stefan Isopescu

Ward Management

	2013	2014	Rating	Progress
Admitted to orthopaedic ward within 4 hours	65.1	33.0	○	↓
Mental test score recorded on admission	42.6	39.3	×	↓
Perioperative medical assessment	1.1	0.0	×	-
Mobilised out of bed on the day after surgery (QS16-9)	No data	61.1	○	
Received falls assessment (QS16-11)	14.9	0.0		↓
Received bone health assessment (QS16-12)	96.1	59.5		↓

Surgery

	2013	2014	Rating	Progress
Surgery on day of, or day after, admission	61.4	60.2	×	-
Proportion of general anaesthetic with nerve blocks	68.8	61.0	○	↓
Proportion of spinal anaesthetic with nerve blocks	38.5	28.0	○	↓
Proportion of arthroplasties which are cemented	63.9	87.4	○	↑
Eligible displaced intracapsular fractures treated with THR	2.9	18.2	○	↑
Intertrochanteric fractures treated with SHS	85.4	92.6	✓	↑
Subtrochanteric fractures treated with an IM nail	23.5	33.3	×	↑

Outcomes

	2013	2014	Rating	Progress
Case ascertainment	No data	106.2		
Overall hospital length of stay (days)	30.3	31.4	×	-
Return to original residence within 30 days	0.0	52.4	○	↑
Developed a pressure ulcer after presenting with hip fracture	3.2	0.5		↑
Pressure ulcer status not recorded	3.2	0.0	✓	↑
Hip fractures which were sustained as an inpatient	No data	2.4		

Key

✓ Top Quartile

○ 2nd/3rd Quartile

× Lowest Quartile



Performance improving

- Performance broadly unchanged



Performance declining



Run Charts

(Up to date, and interactive versions of all run charts for your hospital can be viewed at www.nhfd.co.uk)

Best Practice - WYB. Withybush General Hospital

Indicators supporting Best Practice Tariff (BPT) from April 2012

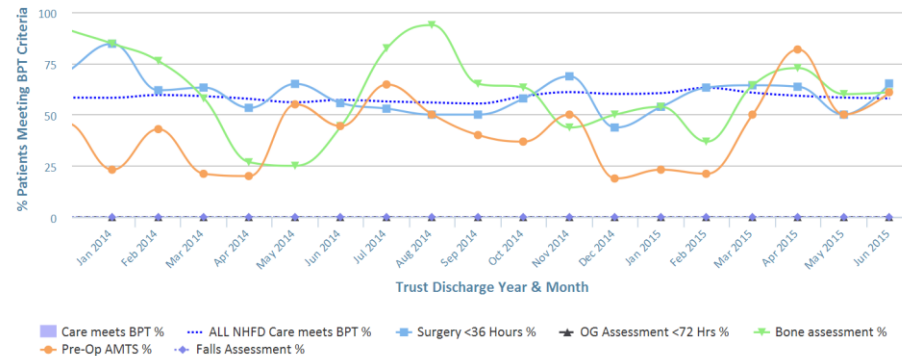


Chart data is indicative status only - © Royal College of Physicians - Technology by Crown Informatics (ID: BPT2)

Length of Stay - WYB. Withybush General Hospital

NHFD Report - Averaged over 12 months from April 2011

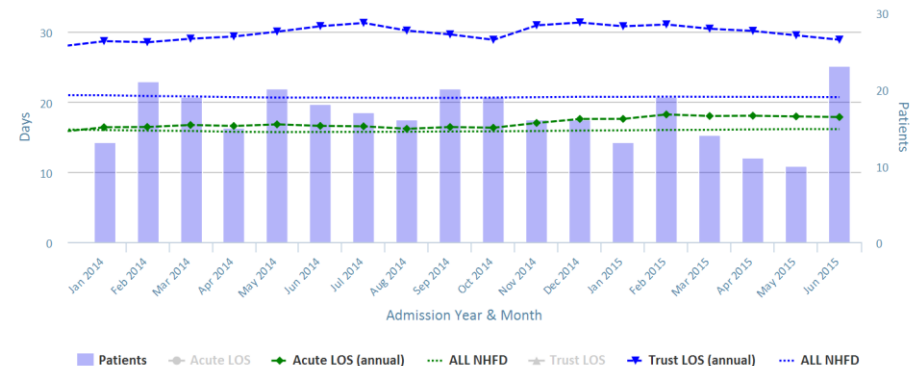


Chart data is indicative status only - www.nhfd.co.uk © Royal College of Physicians - Technology by Crown Informatics

Overall Performance - WYB. Withybush General Hospital

NHFD Report - Averaged over 12 months (All Data) from April 2011 (Dual Axis)

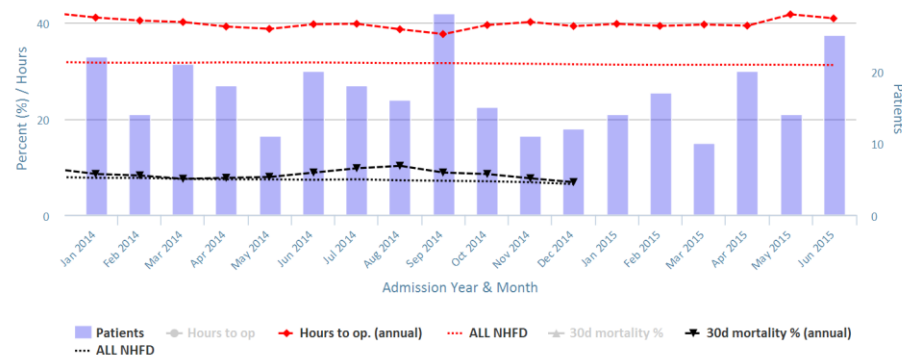


Chart data is indicative status only - www.nhfd.co.uk © Royal College of Physicians - Technology by Crown Informatics

Patient Safety - WYB. Withybush General Hospital

NHFD Report - Averaged over 12 months from April 2011

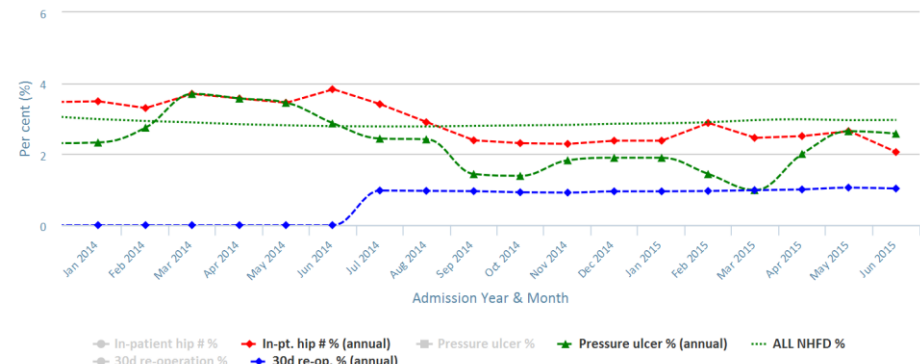


Chart data is indicative status only - www.nhfd.co.uk © Royal College of Physicians - Technology by Crown Informatics